

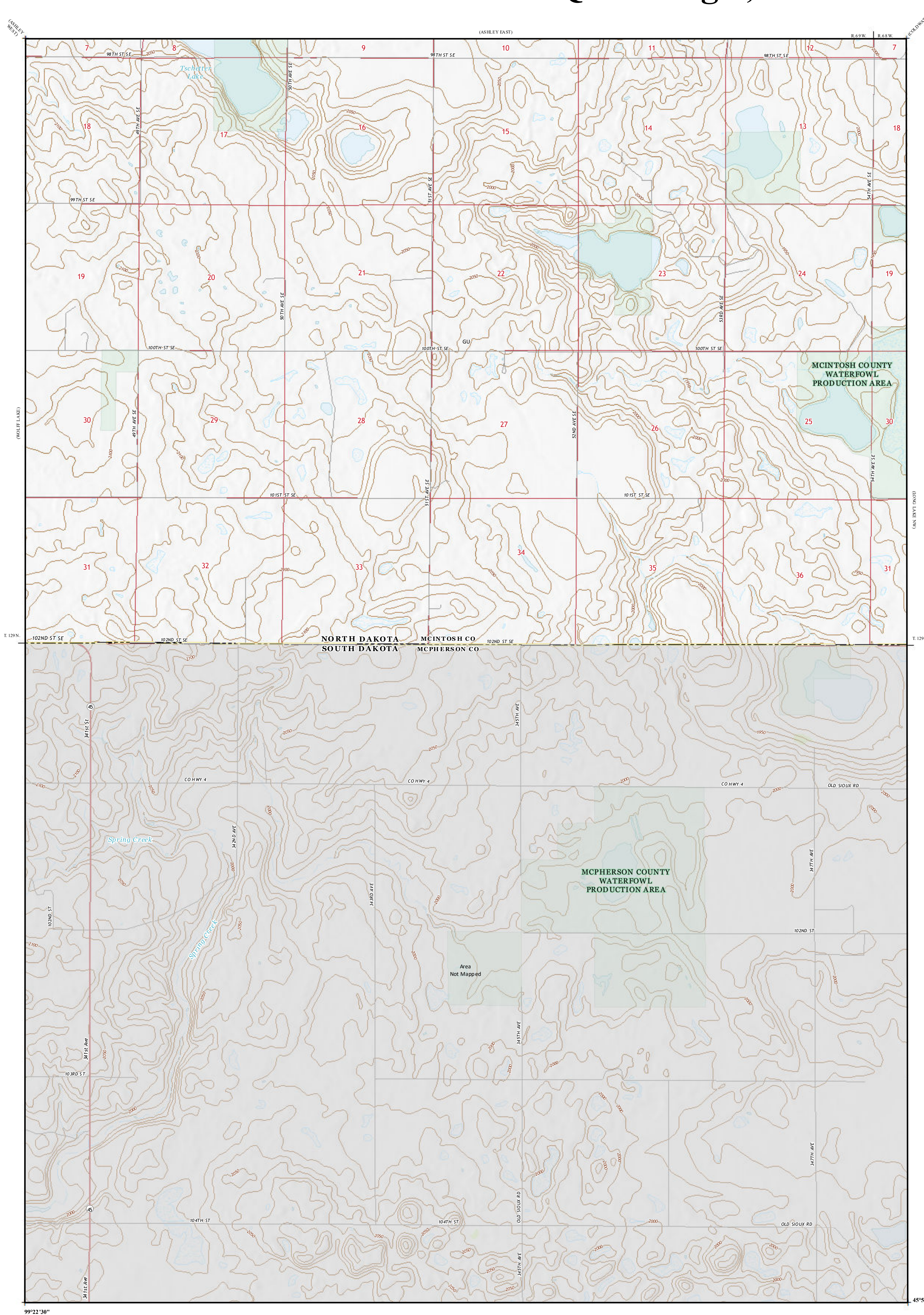
Areas of Landslides

Schumacher Lake NE Quadrangle, North Dakota

Christopher A. Maike

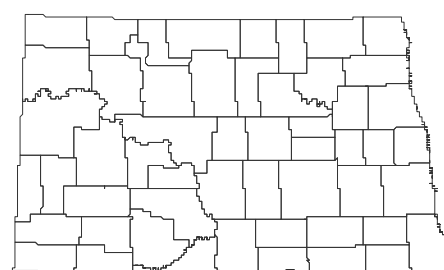
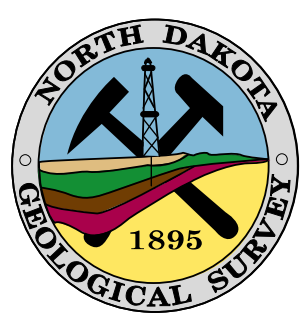
2025

Areas of landslides were investigated within this quadrangle based on a review of county historical aerial photography flown in July 1952 by the United States Department of Agriculture (USDA). Additional data sources include digital orthophotography from the USDA National Agriculture Imagery Program (NAIP) flown in July to September 2024 and the North Dakota Geological Survey LiDAR Map Series, which compiles raw data flown in November to December 2020 from the North Dakota State Water Commission. From this investigation, no landslides were mapped within the quadrangle.



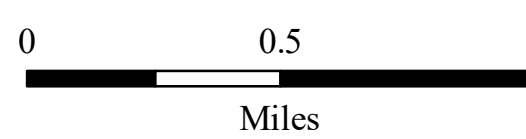
ROAD CLASSIFICATION

- Expressway
- Secondary Hwy
- Ramp
- Local Connector
- Local Road
- 4WD
- Interstate Route
- US Route
- State Route



Schumacher Lake NE Quadrangle, North Dakota

Scale 1:24,000



Miles

Lambert Conformal Conic Projection
North American 1983 Datum
USGS 7.5 Minute Topo Map

Standard Parallels 45°00'N, 46°00'N
NGVD 1988
Contour Interval 10 Feet

