

Areas of Landslides

Watford City Quadrangle, North Dakota

**Benjamin C. York
&
Fred J. Anderson**

2024

UNIT DESCRIPTIONS

 **Geology Undifferentiated**

QUATERNARY SYSTEM








RECENT/PLEISTOCENE

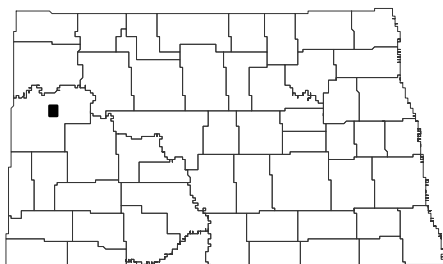
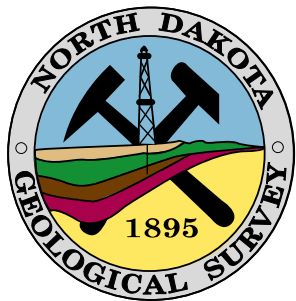
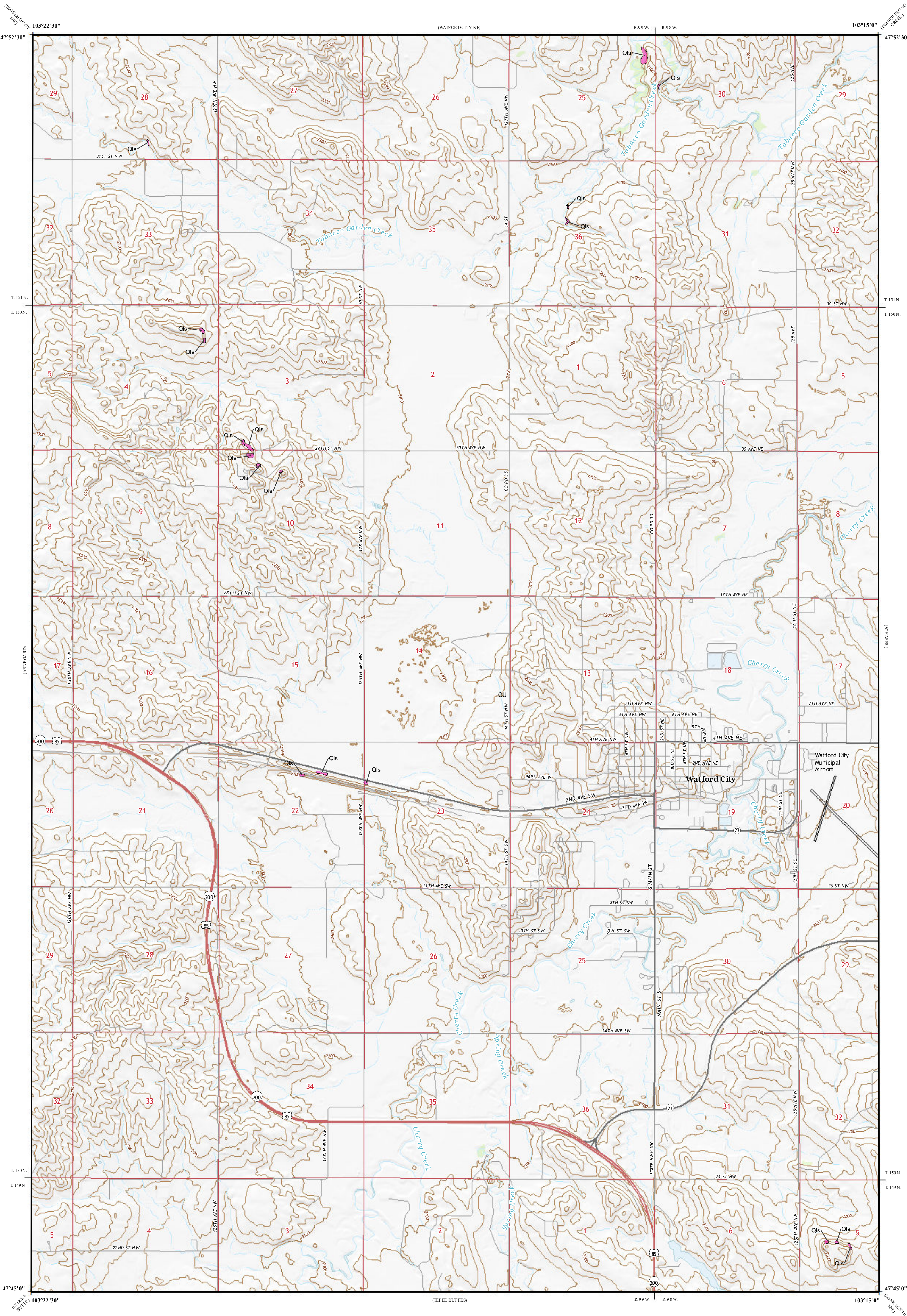
 **Landslide Deposits**

A mass of material that has moved downslope. Includes earth flows, slumps, and areas of soil creep.

Landslides identified on this quadrangle were mapped from stereo pairs, black and white 1:20,000 scale aerial photographs flown in June to September 1958 by the United States Department of Agriculture (USDA). Additional data sources include digital orthophotography from the USDA National Agriculture Imagery Program (NAIP) flown in August 2022 and the North Dakota Geological Survey LIDAR Map Series, which compiles raw data flown in May 2023 from the North Dakota State Water Commission.

ROAD CLASSIFICATION

Expressway  Local Connector 
Secondary Hwy  Local Road 
Ramp  4WD 
 Interstate Route  US Route  State Route



Watford City Quadrangle, North Dakota

