

# Areas of Landslides

## Long X Divide Quadrangle, North Dakota

Benjamin C. York  
&  
Fred J. Anderson  
  
2024

### UNIT DESCRIPTIONS

#### QUATERNARY SYSTEM

#### RECENT/PLEISTOCENE

- Qlsa

Areas of Recently Active Landslides

Landslide areas showing movement between 2008 and 2023.
- Qls

Landslide Deposits

A mass of material that has moved downslope. Includes earth flows, slumps, and areas of soil creep.

Landslides identified on this quadrangle were mapped from stereo pairs, black and white 1:20,000 scale aerial photographs flown in June to September 1958 by the United States Department of Agriculture (USDA). Additional data sources include digital orthophotography from the USDA National Agriculture Imagery Program (NAIP) flown in August 2022 and the North Dakota Geological Survey LiDAR Map Series, which compiles raw data flown in May 2023 from the North Dakota State Water Commission.

Areas of recently active landslides (Qlsa) mapped on this quadrangle were identified from changes between the 2008 and 2023 LiDAR elevation datasets observed on an elevation subtraction raster. Noise introduced from data precision (typically within a foot between the LiDAR datasets) is removed on this raster by excluding the signal from elevation change in the +/- 1 foot interval. Geologists interpret areas of landslide movement in geomorphic context (typically a decrease in elevation near a landslide headscarp paired with an increase in elevation downslope near the toe) and delineate those areas within the larger landslide dataset. Landslides not identified as recently active may have also experienced movement relatively recently, but did not show discernable signs of movement during the 2008 to 2023 window between LiDAR collects.

#### ROAD CLASSIFICATION

- Expressway

Local Connector
- Secondary Hwy

Local Road
- Ramp

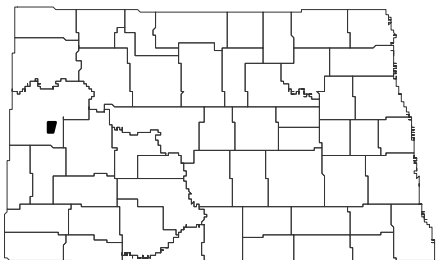
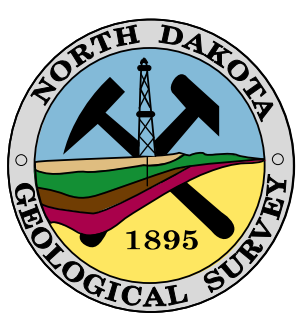
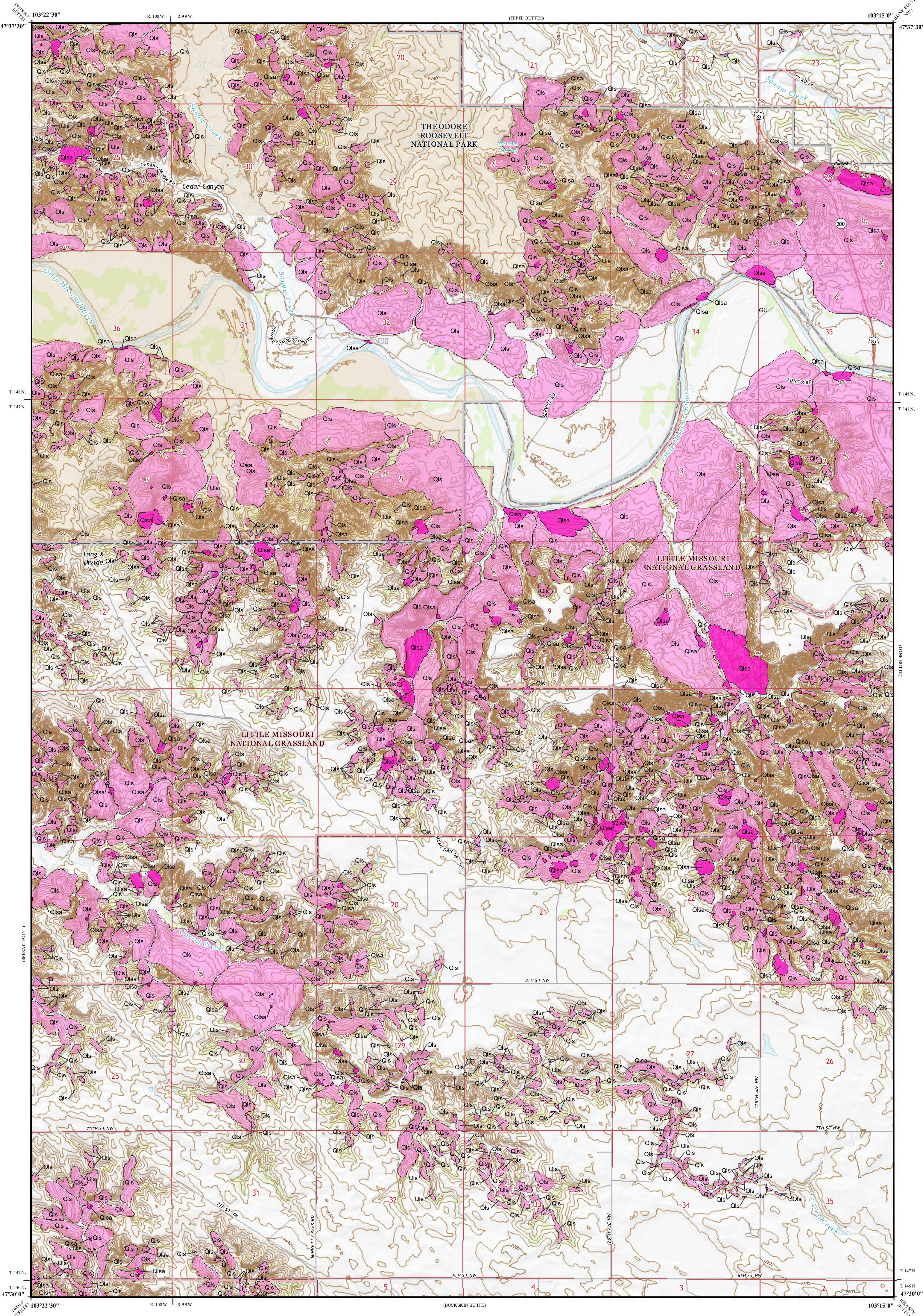
4WD
- Interstate Route

US Route

State Route

Slope Failure Statistical Summary				
Map Unit	No. of Landslides	Mapped Landslide Area		Map Area %
		acres	m <sup>2</sup>	
Total Landslides (Qls & Qlsa)	1,685	8,393	33,966,807	26.7
Recently Active Landslides (Qlsa)	392	451	1,824,047	1.4

5.4% of the mapped landslide area was active between 2008 and 2023



Long X Divide Quadrangle, North Dakota

