

# Areas of Landslides

## Camp Creek West Quadrangle, North Dakota

**Benjamin C. York  
&  
Fred J. Anderson**

**2024**

**UNIT DESCRIPTIONS**

 **Geology Undifferentiated**

**QUATERNARY SYSTEM**

**RECENT/PLEISTOCENE**

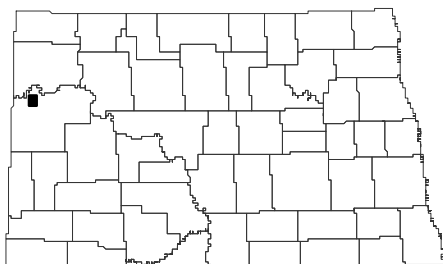
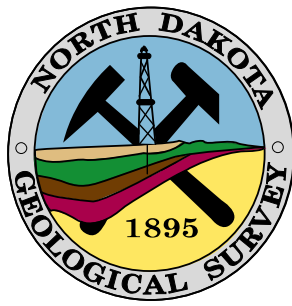
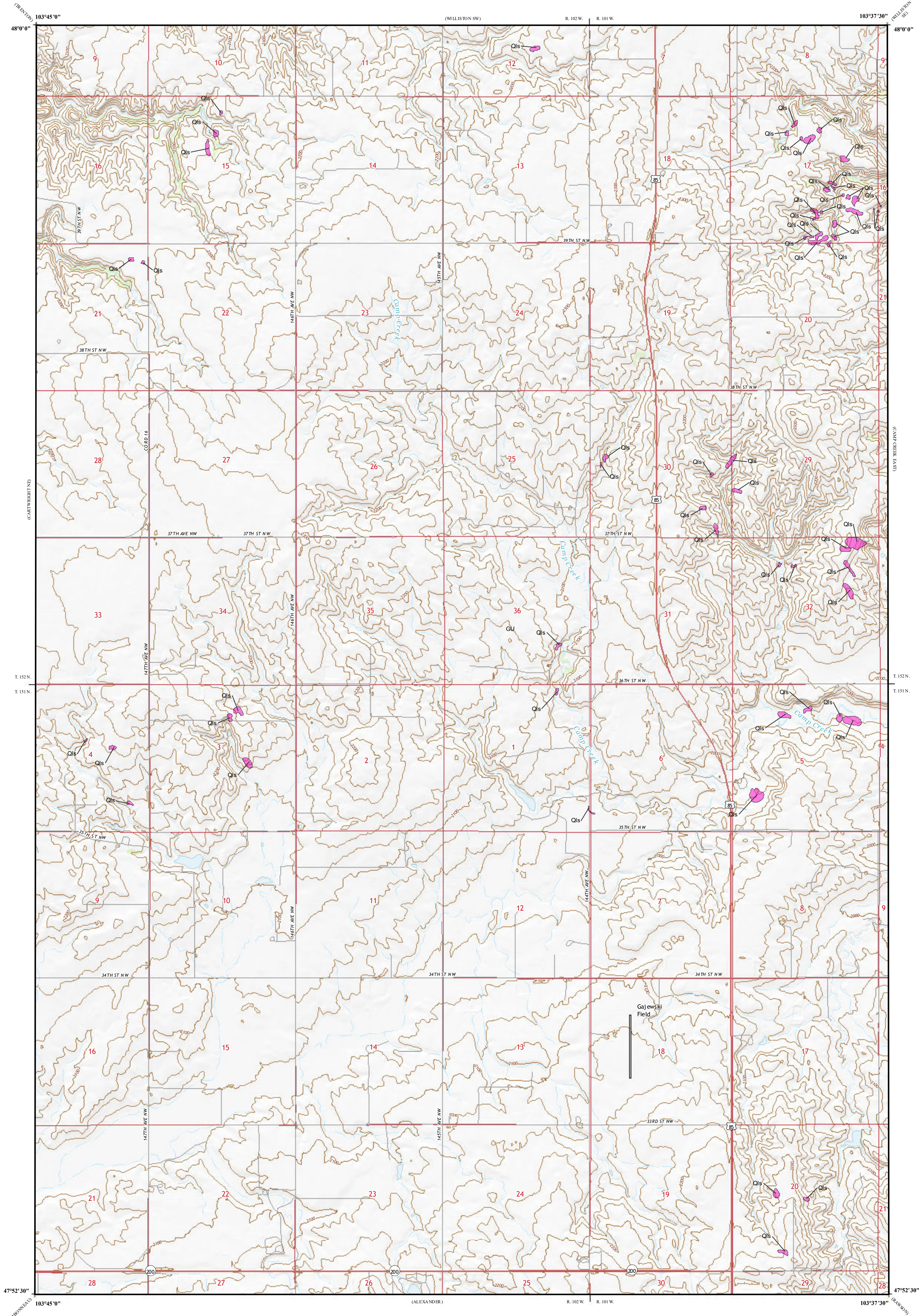
 **Landslide Deposits**

A mass of material that has moved downslope. Includes earth flows, slumps, and areas of soil creep.

Landslides identified on this quadrangle were mapped from stereo pairs, black and white 1:20,000 scale aerial photographs flown in June to September 1958 by the United States Department of Agriculture (USDA). Additional data sources include digital orthophotography from the USDA National Agriculture Imagery Program (NAIP) flown in August 2022 and the North Dakota Geological Survey LiDAR Map Series, which compiles raw data flown in May 2023 from the North Dakota State Water Commission.

**ROAD CLASSIFICATION**

Expressway    Local Connector  
Secondary Hwy    Local Road  
Ramp    4WD  
Interstate Route    US Route    State Route



Camp Creek West Quadrangle, North Dakota

