

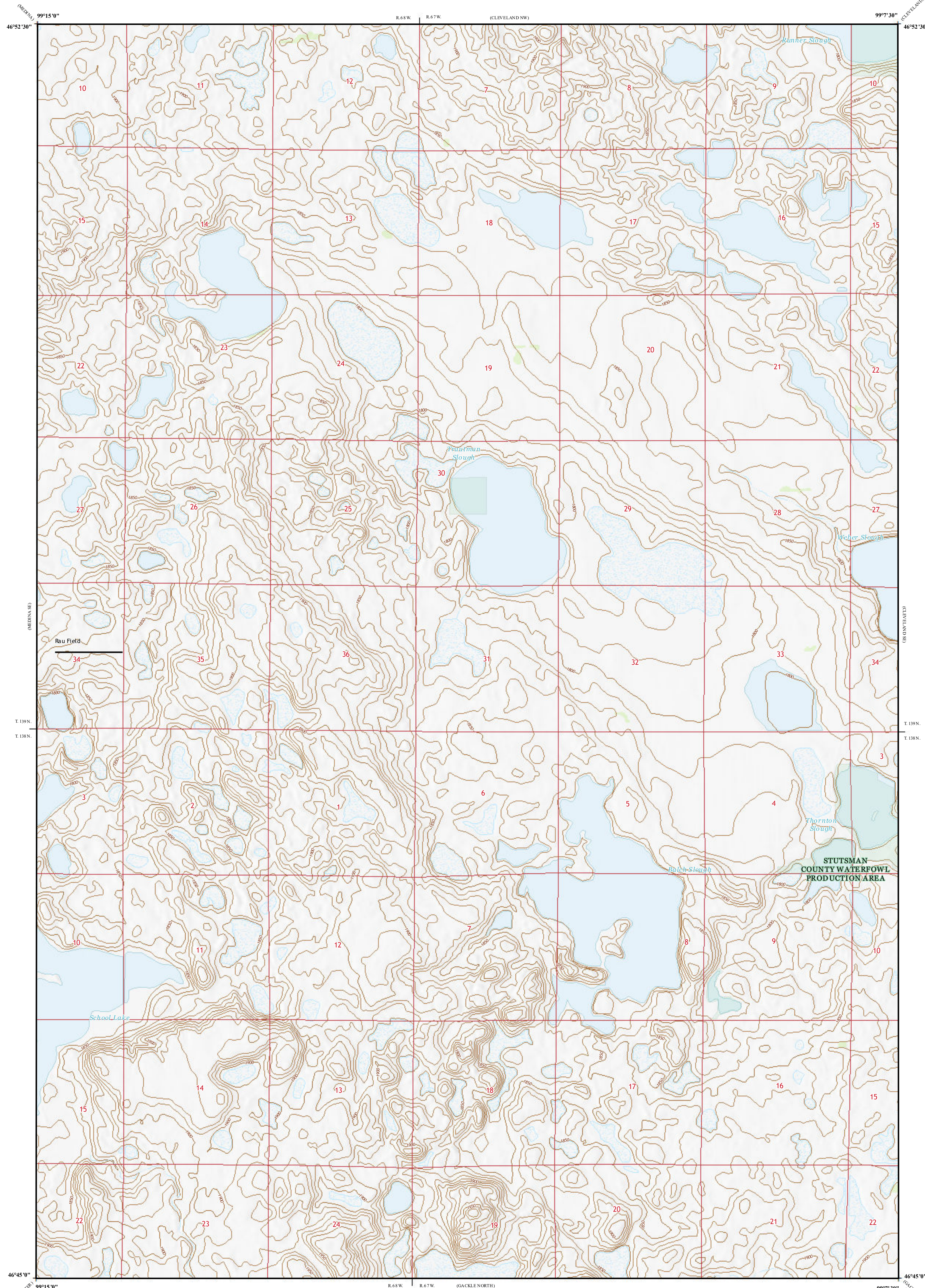
# Areas of Landslides

## Cleveland SW Quadrangle, North Dakota

Christopher A. Maike

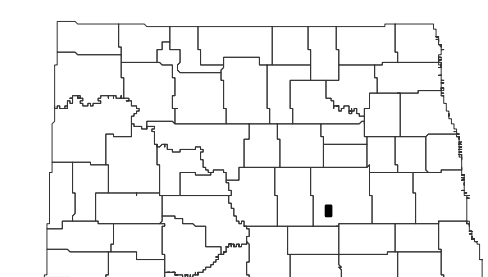
2025

Areas of landslides were investigated within this quadrangle based on a review of county historical aerial photography flown in 1957 by the United States Department of Agriculture (USDA). Additional data sources include digital orthophotography from the USDA National Agriculture Imagery Program (NAIP) flown in July to September 2024 and the North Dakota Geological Survey LiDAR Map Series, which compiles raw data flown in November to December 2020 from the North Dakota State Water Commission. From this investigation, no landslides were mapped within the quadrangle.



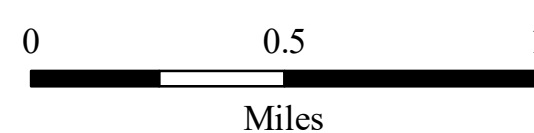
### ROAD CLASSIFICATION

- |               |                  |                 |          |  |             |
|---------------|------------------|-----------------|----------|--|-------------|
| Expressway    |                  | Local Connector |          |  |             |
| Secondary Hwy |                  | Local Road      |          |  |             |
| Ramp          |                  | 4WD             |          |  |             |
|               | Interstate Route |                 | US Route |  | State Route |



Cleveland SW Quadrangle, North Dakota

Scale 1:24,000



Miles

Lambert Conformal Conic Projection  
North American 1983 Datum  
USGS 7.5 Minute Topo Map

Standard Parallels 46°45'0"N, 46°52'30"N  
NGVD 1988  
Contour Interval 10 Feet

