

Areas of Landslides

Egeland SW Quadrangle, North Dakota

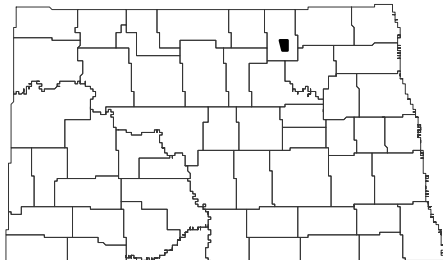
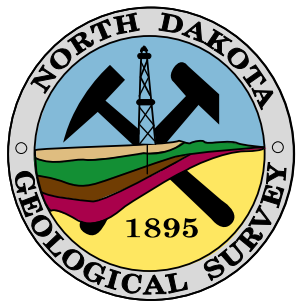
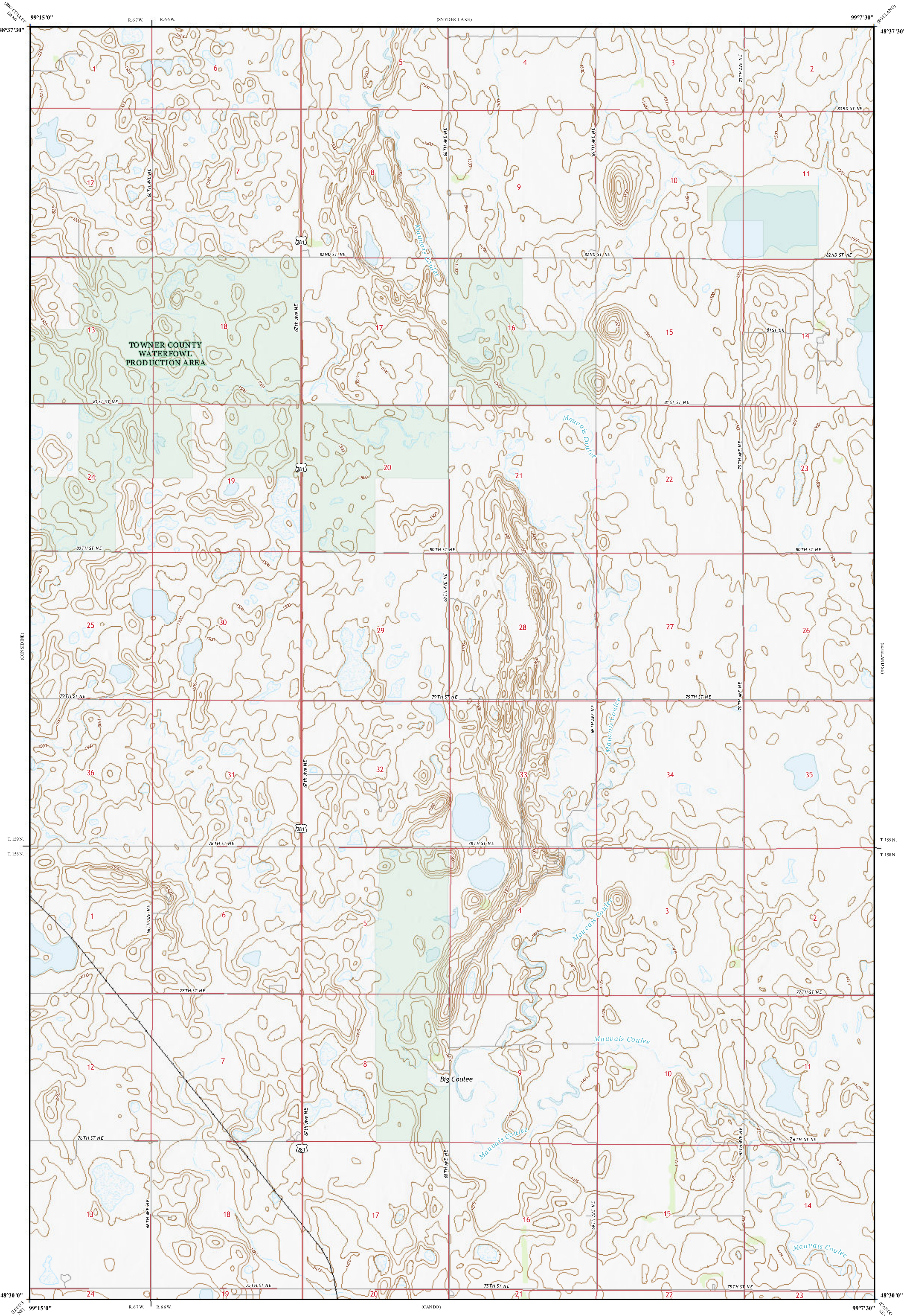
Christopher A. Maike

2025

Areas of landslides were investigated within this quadrangle based on a review of county historical aerial photography flown in 1959 by the United States Department of Agriculture (USDA). Additional data sources include digital orthophotography from the USDA National Agriculture Imagery Program (NAIP) flown in August to September 2024 and the North Dakota Geological Survey LiDAR Map Series, which compiles raw data flown in May 2019 to April 2021 from the North Dakota State Water Commission. From this investigation, no landslides were mapped within the quadrangle.

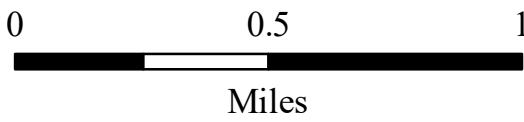
ROAD CLASSIFICATION

- | | | | |
|---------------|------------------|-----------------|-------------|
| Expressway | | Local Connector | |
| Secondary Hwy | | Local Road | |
| Ramp | | 4WD | |
| | Interstate Route | | US Route |
| | | | State Route |



Egeland SW Quadrangle, North Dakota

Scale 1:24,000



Lambert Conformal Conic Projection
North American 1983 Datum
USGS 7.5 Minute Topo Map

Standard Parallels 48°30'00"N, 48°37'30"N
NGVD 1988
Contour Interval 5 Feet



2017 Magnetic North
Declination at Center of Sheet