

Areas of Landslides

Considine Quadrangle, North Dakota

Christopher A. Maike

2025

UNIT DESCRIPTIONS

Geology Undifferentiated

QUATERNARY SYSTEM

RECENT/PLEISTOCENE

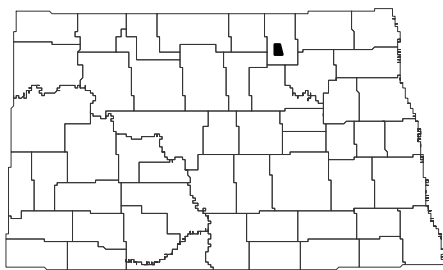
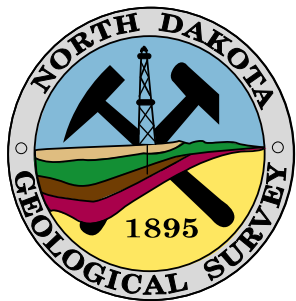
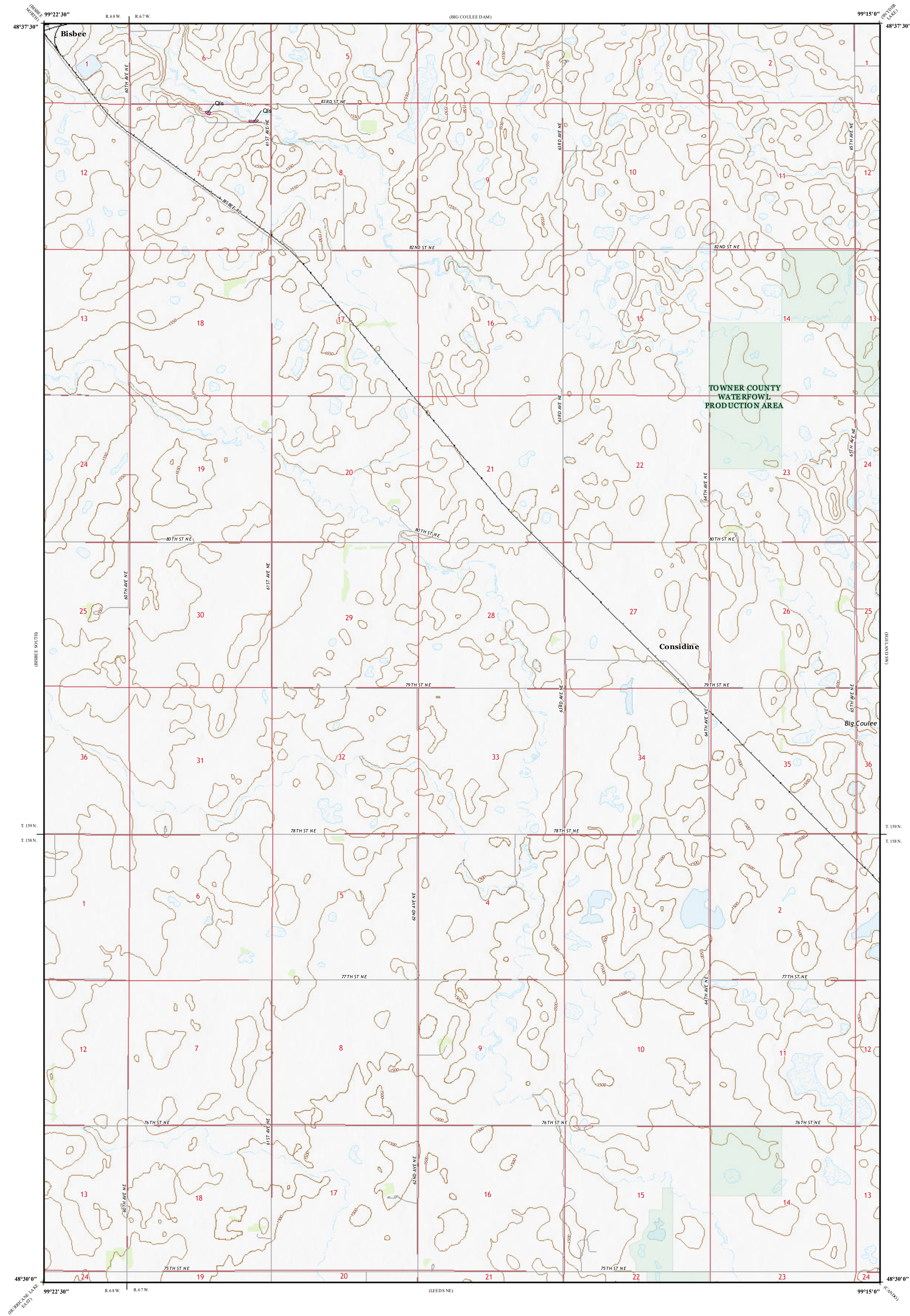
Qls Landslide Deposits

A mass of material that has moved downslope. Includes earth flows, slumps, and areas of soil creep.

Landslides identified on this quadrangle were mapped from stereo pairs, black and white 1:20,000 scale aerial photographs flown in 1959 by the United States Department of Agriculture (USDA). Additional data sources include digital orthophotography from the USDA National Agriculture Imagery Program (NAIP) flown in August to September 2024 and the North Dakota Geological Survey LiDAR Map Series, which compiles raw data flown in May 2019 to April 2021 from the North Dakota State Water Commission.

ROAD CLASSIFICATION

Expressway Local Connector
Secondary Hwy Local Road
Ramp 4WD
Interstate Route US Route State Route



Considine Quadrangle, North Dakota

