

# Areas of Landslides

## Bisbee North Quadrangle, North Dakota

Christopher A. Maike

2025

### UNIT DESCRIPTIONS

Geology Undifferentiated

### QUATERNARY SYSTEM

### RECENT/PLEISTOCENE

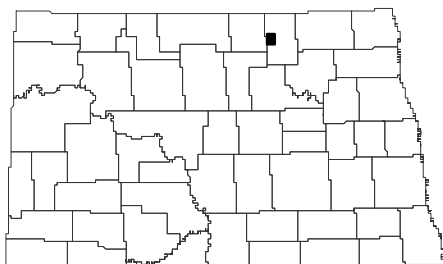
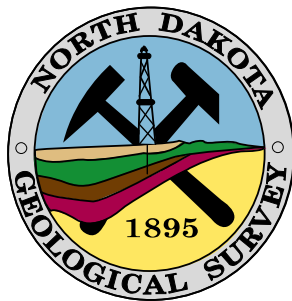
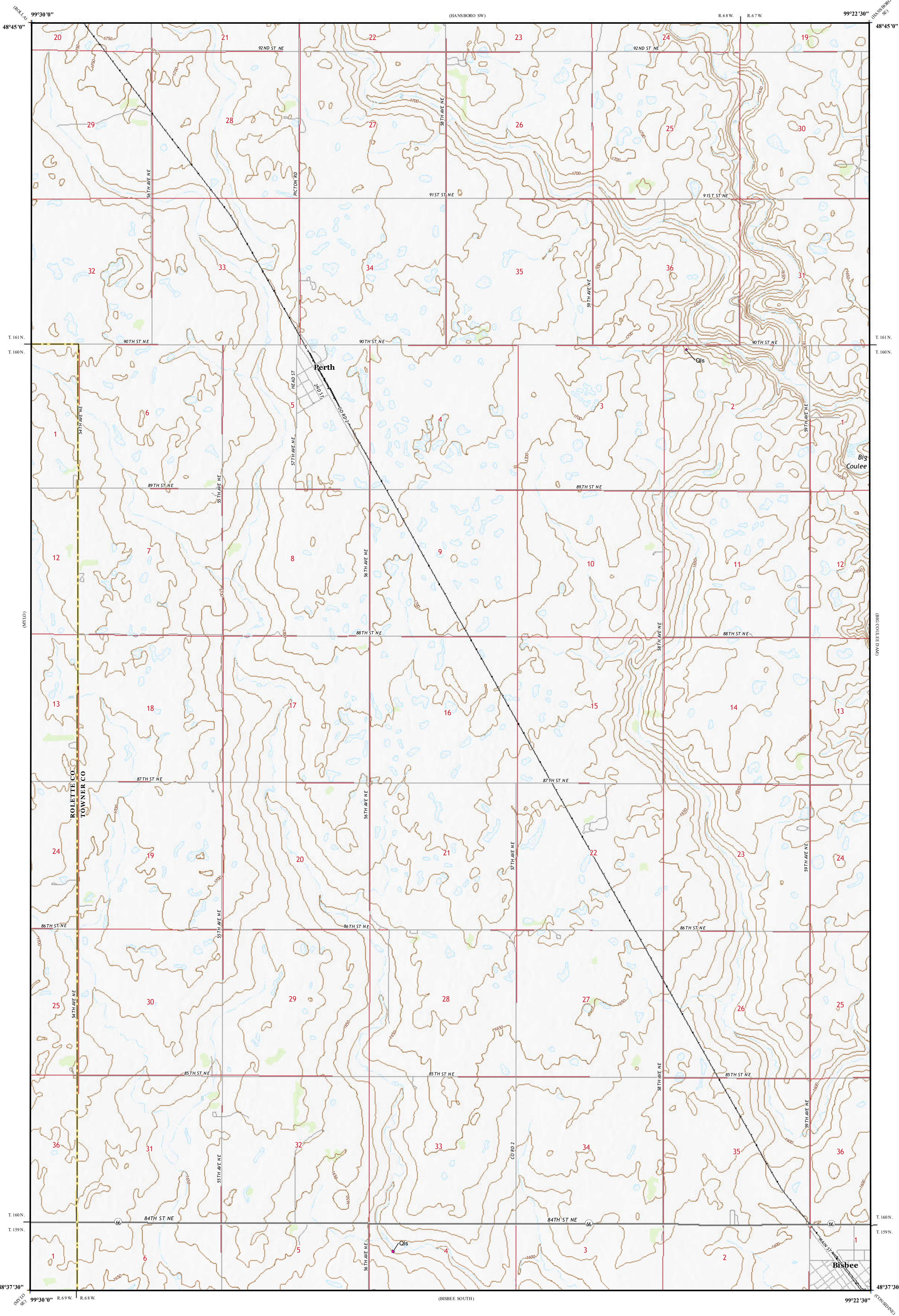
Qls Landslide Deposits

A mass of material that has moved downslope. Includes earth flows, slumps, and areas of soil creep.

Landslides identified on this quadrangle were mapped from stereo pairs, black and white 1:20,000 scale aerial photographs flown in 1959 and 1961 by the United States Department of Agriculture (USDA). Additional data sources include digital orthophotography from the USDA National Agriculture Imagery Program (NAIP) flown in August to September 2024 and the North Dakota Geological Survey LiDAR Map Series, which compiles raw data flown in May 2019 to May 2020 from the North Dakota State Water Commission.

### ROAD CLASSIFICATION

Expressway Local Connector  
Secondary Hwy Local Road  
Ramp 4WD  
Interstate Route US Route State Route



Bisbee North Quadrangle, North Dakota

Scale 1:24,000  
0 0.5 1  
Miles  
Lambert Conformal Conic Projection  
North American 1983 Datum  
USGS 7.5 Minute Topo Map  
Standard Parallels 48°37'30"N, 48°45'0"N  
NGVD 1988  
Contour Interval 10 Feet

