

Areas of Landslides

Dunn Center Quadrangle, North Dakota

Christopher A. Maike
&
Fred J. Anderson

2024

UNIT DESCRIPTIONS

Geology Undifferentiated

QUATERNARY SYSTEM

RECENT/PLEISTOCENE

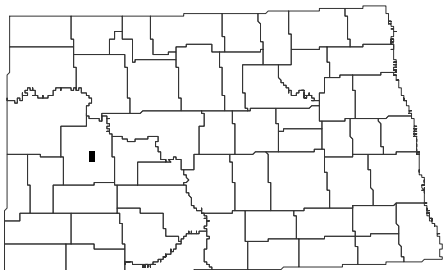
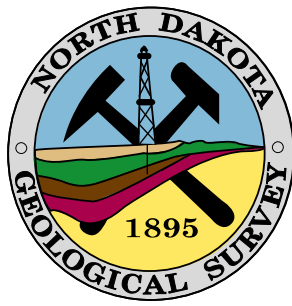
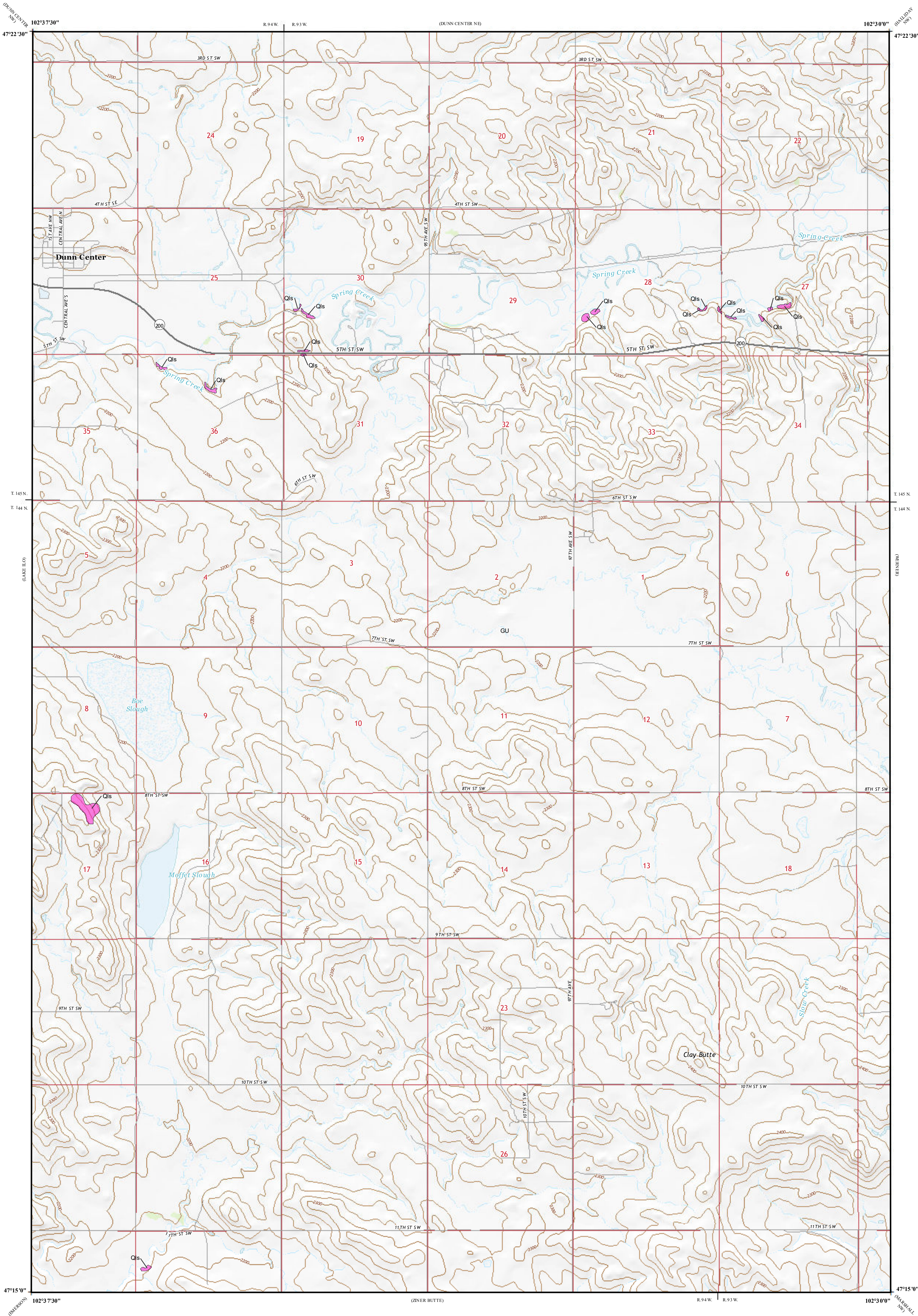
Qls Landslide Deposits

A mass of material that has moved downslope. Includes earth flows, slumps, and areas of soil creep.

Landslides identified on this quadrangle were mapped from stereo pairs, black and white 1:20,000 scale aerial photographs flown in June to September 1958 by the United States Department of Agriculture (USDA). Additional data sources include digital orthophotography from the USDA National Agriculture Imagery Program (NAIP) flown in August 2022 and the North Dakota Geological Survey LiDAR Map Series, which compiles raw data flown in November 2021 from the North Dakota State Water Commission.

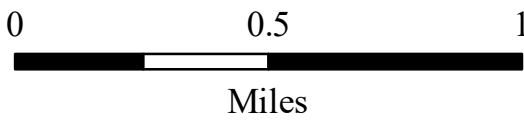
ROAD CLASSIFICATION

Expressway Local Connector
Secondary Hwy Local Road
Ramp 4WD
Interstate Route US Route State Route



Dunn Center Quadrangle, North Dakota

Scale 1:24,000



Lambert Conformal Conic Projection
North American 1983 Datum
USGS 7.5 Minute Topographic Map
Standard Parallels 47°15'0"N, 47°22'30"N
NGVD 1929
Contour Interval 20 Feet



2019 Magnetic North
Declination at Center of Sheet