

Areas of Landslides

Montpelier Quadrangle, North Dakota

**Benjamin C. York
&
Levi D. Moxness**

2025

UNIT DESCRIPTIONS

Geology Undifferentiated

QUATERNARY SYSTEM

RECENT/PLEISTOCENE

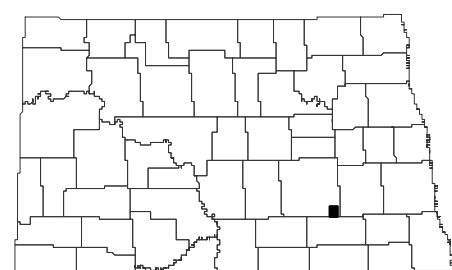
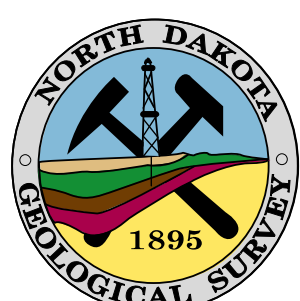
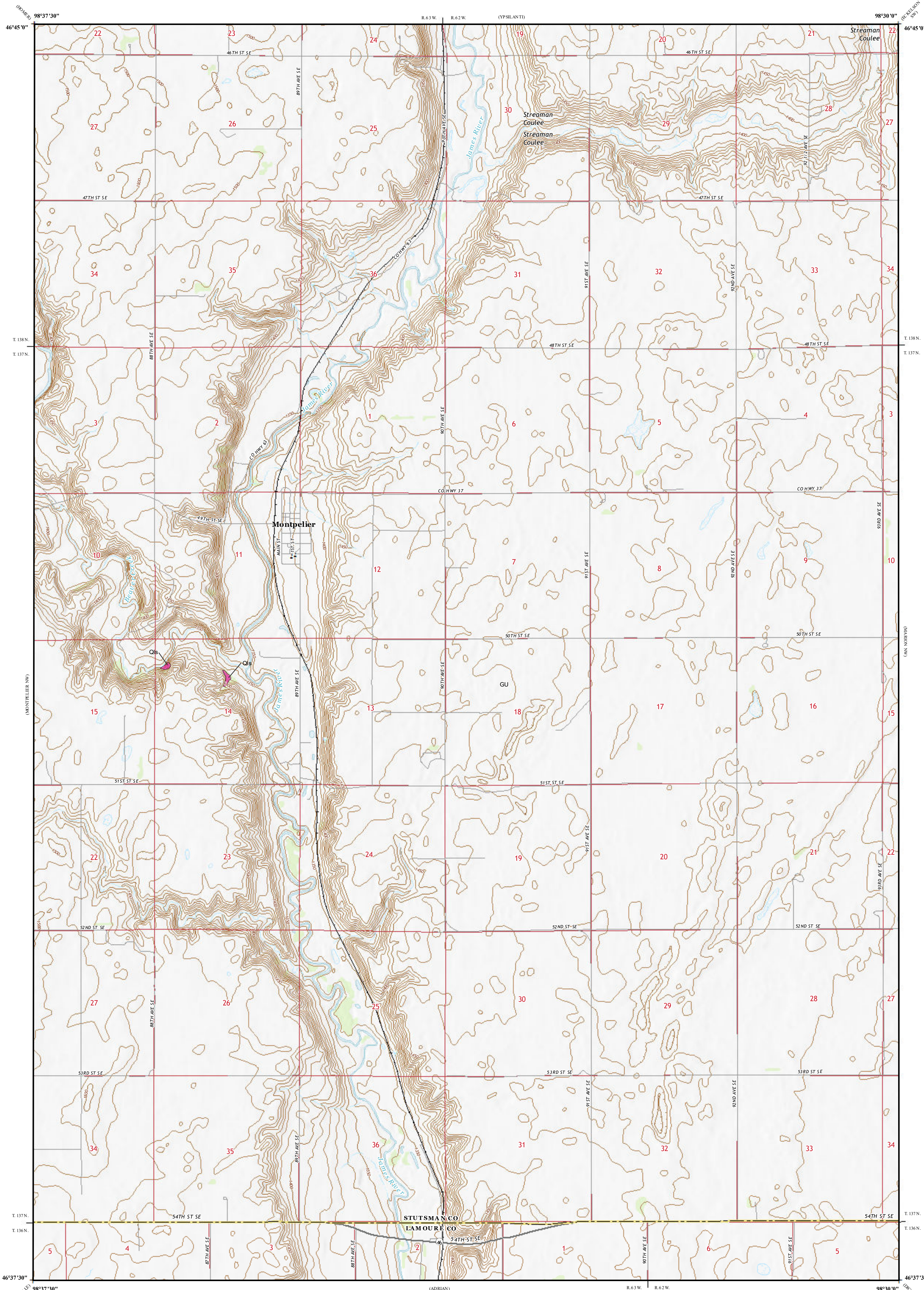
Qls Landslide Deposits

A mass of material that has moved downslope. Includes earth flows, slumps, and areas of soil creep.

Landslides identified on this quadrangle were mapped from stereo pairs, black and white 1:20,000 scale aerial photographs flown in July 1957 by the United States Department of Agriculture (USDA). Additional data sources include digital orthophotography from the USDA National Agriculture Imagery Program (NAIP) flown in July to September 2024 and the North Dakota Geological Survey LiDAR Map Series, which compiles raw data flown in November 2020 to April 2021 from the North Dakota State Water Commission.

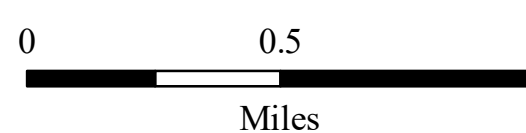
ROAD CLASSIFICATION

- | | | | |
|---------------|------------------|-----------------|----------|
| Expressway | | Local Connector | |
| Secondary Hwy | | Local Road | |
| Ramp | | 4WD | |
| | Interstate Route | | US Route |
| | State Route | | |



Montpelier Quadrangle, North Dakota

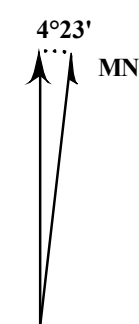
Scale 1:24,000



Miles

Lambert Conformal Conic Projection
North American 1983 Datum
USGS 7.5 Minute Topo Map

Standard Parallels 46° 37' 30" N, 46° 45' 0" N
NGVD 1988
Contour Interval 10 Feet



2017 Magnetic North
Declination at Center of Sheet