

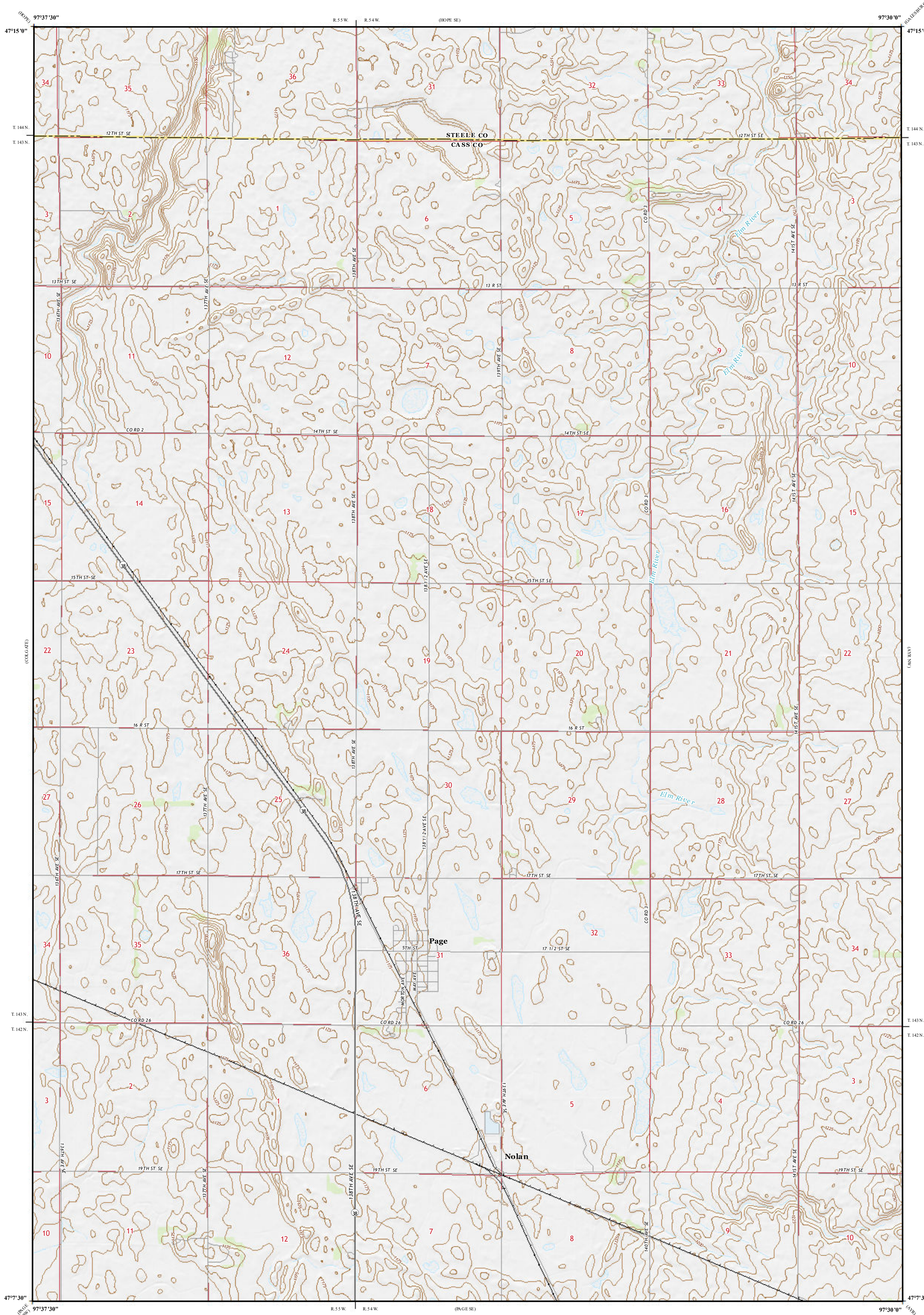
Areas of Landslides

Page Quadrangle, North Dakota

Christopher A. Maike

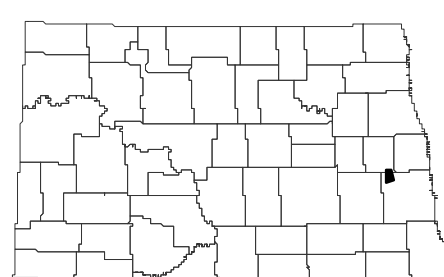
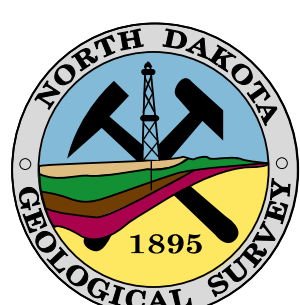
2023

Areas of landslides were investigated within this quadrangle based on a review of county historical aerial photography flown in 1962 by the United States Department of Agriculture (USDA). Additional data sources include digital orthophotography from the USDA National Agriculture Imagery Program (NAIP) flown in October 2021 and the North Dakota Geological Survey LiDAR Map Series, which compiles raw data flown in May 2019 from the North Dakota State Water Commission. From this investigation, no landslides were mapped within the quadrangle.



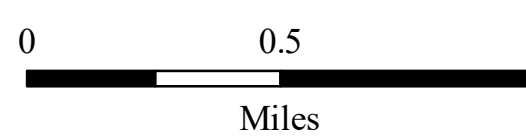
ROAD CLASSIFICATION

- | | | | | | |
|---------------|------------------|-----------------|----------|--|-------------|
| Expressway | | Local Connector | | | |
| Secondary Hwy | | Local Road | | | |
| Ramp | | 4WD | | | |
| | Interstate Route | | US Route | | State Route |



Page Quadrangle, North Dakota

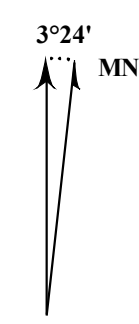
Scale 1:24,000



Miles

Lambert Conformal Conic Projection
North American 1983 Datum
USGS 7.5 Minute Topo Map

Standard Parallel: 47° 20' N, 47° 15' 0" N
NGVD 1988
Contour Interval 5 Feet



2019 Magnetic North
Declination at Center of Sheet