

# Areas of Landslides Sperati Point Quadrangle, North Dakota

Edward C. Murphy

2003

### UNIT DESCRIPTIONS

 Geology Undifferentiated

### QUATERNARY SYSTEM

#### RECENT/PLEISTOCENE

 **Qls** Landslide Deposits

Variable mixture of strata and deposits that have slid to the base of steep slopes. Most of the landslides in this area are hundreds, if not thousands, of years old.

 **Qlc** Landslide and Colluvium Deposits

Colluvium or slopewash partially obscures older landslide deposits.

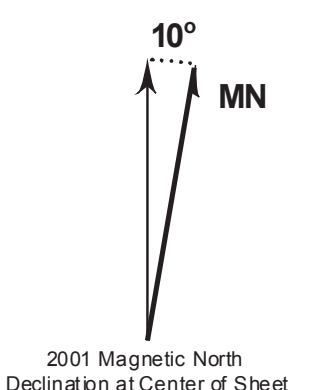
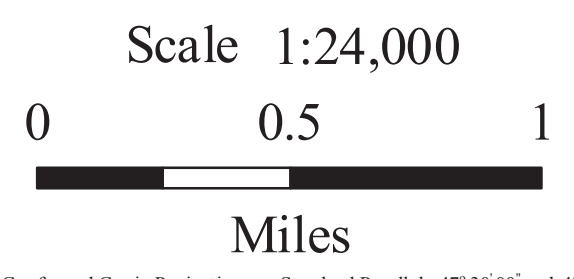
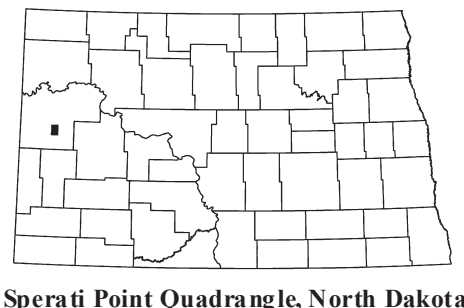
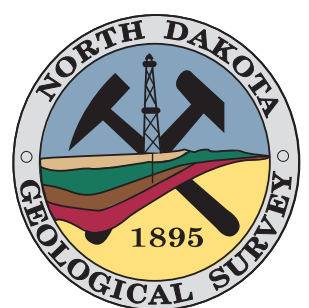
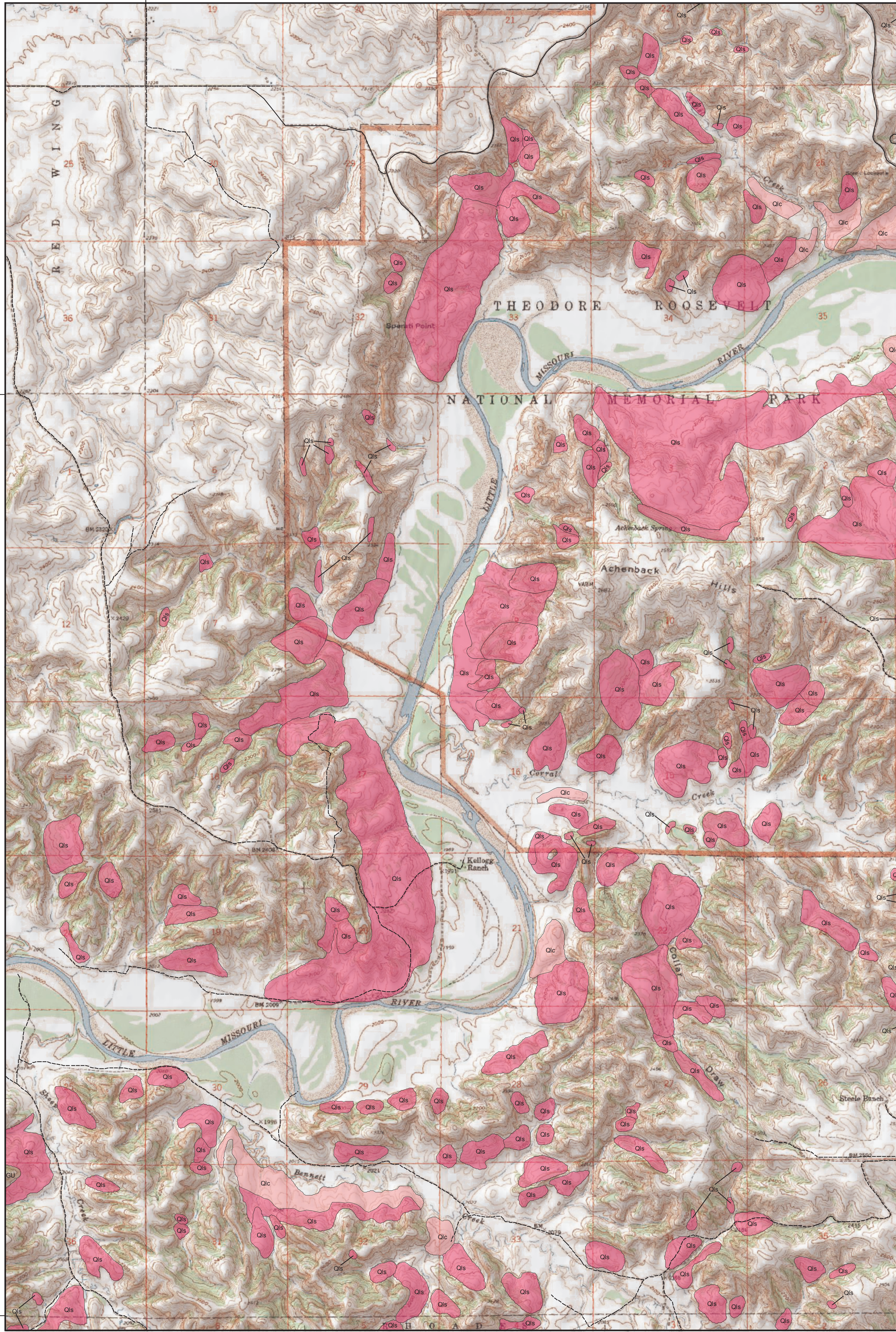
### Geologic Symbols

 Known contact between two geologic units.

### Other Features

 Paved Road

 Unpaved Road



Lambert Conformal Conic Projection Standard Parallels 47° 30' 00" and 47° 37' 30"  
1927 North American Datum NGVD 1929  
USGS 7.5 Minute Topographic Map Contour Interval 20 Feet  
Road Layer Rectified to 2003 NAIP Digital Orthophoto