

# Areas of Landslides Lone Butte Quadrangle, North Dakota

Edward C. Murphy

2003

### UNIT DESCRIPTIONS

 Geology Undifferentiated

### QUATERNARY SYSTEM

#### RECENT/PLEISTOCENE

 Qls Landslide Deposits

Variable mixture of strata and deposits that have slid to the base of steep slopes. Most of the landslides in this area are hundreds, if not thousands, of years old.

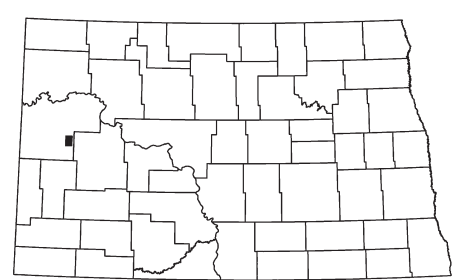
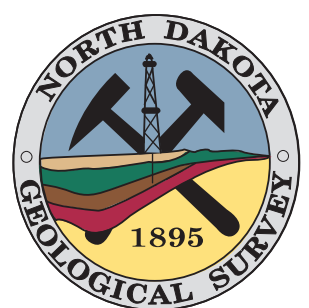
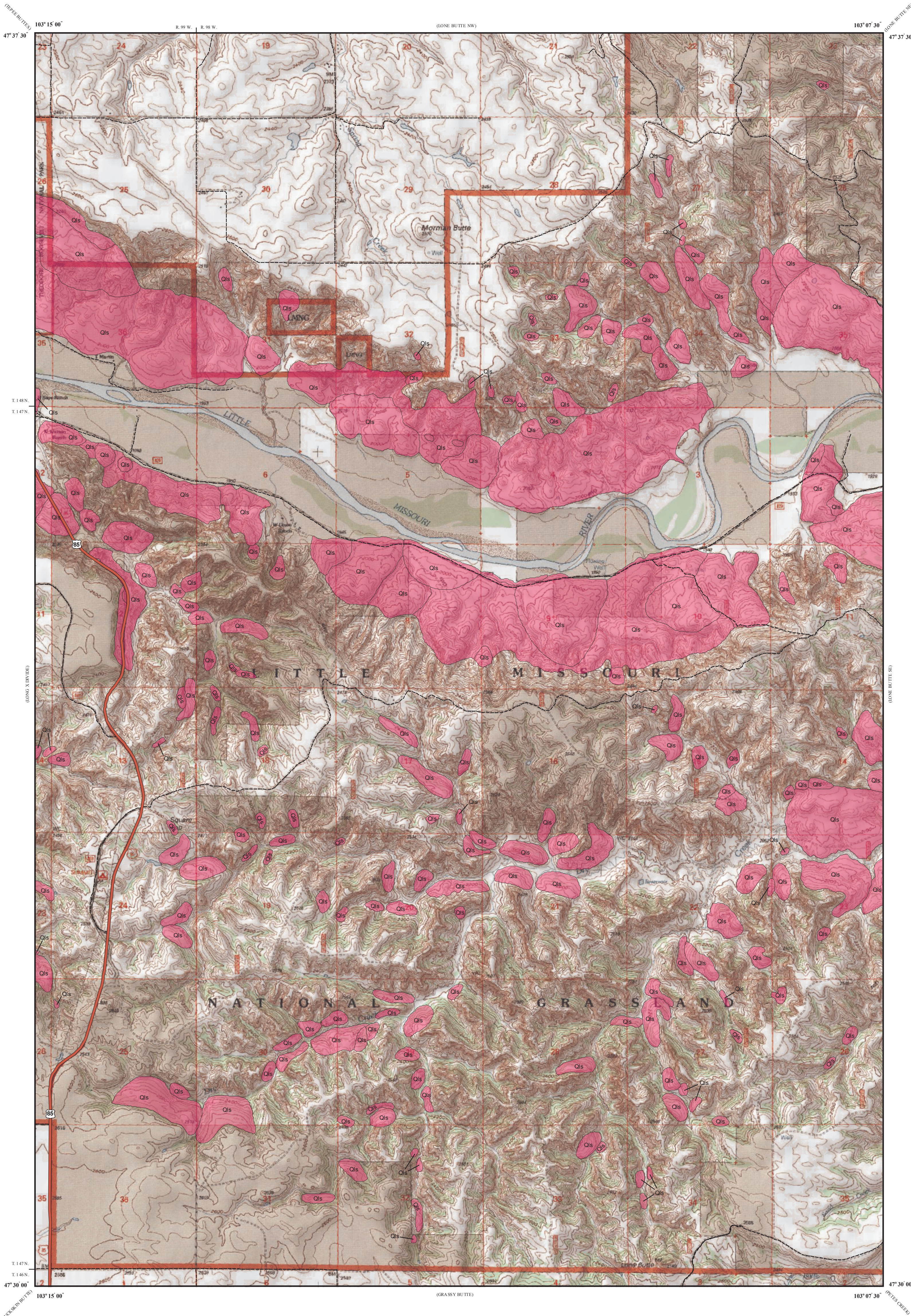
### Geologic Symbols

 Known contact between two geologic units.

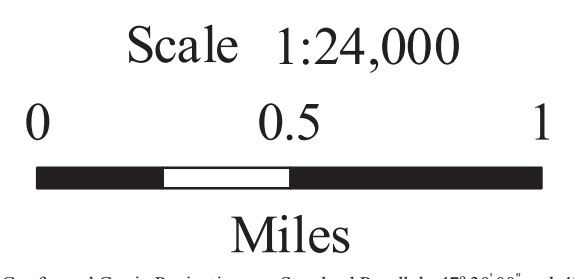
### Other Features

 U. S. Highway

 Unpaved Road



Lone Butte Quadrangle, North Dakota



Scale 1:24,000  
Lambert Conformal Conic Projection Standard Parallels 47° 30' 00" and 47° 37' 30"  
1927 North American Datum NGVD 1929  
USGS 7.5 Minute Topographic Map Contour Interval 20 Feet  
Road Layer Rectified to 2003 NAIP Digital Orthophoto

