

Geologic Map of Sioux County, North Dakota

Clarence G. Carlson

1982

Digitized from: Carlson, C.G., 1982, Geologic map of Grant and Sioux Counties: North Dakota Geological Survey Bulletin 67, Part I, Plate 1, by Levi D. Moxness, Navin Thapa and Christopher A. Maiké.

2022

EXPLANATION

QUATERNARY SYSTEM

HOLOCENE/PLEISTOCENE

OAHE FORMATION

Qa Alluvium: Yellowish brown silt, clay, and sand.

PLEISTOCENE

COLEHARBOR GROUP

Qt Till: Yellowish brown pebbly, sandy, silty clay.

TERTIARY SYSTEM

Tpb **BULLION CREEK AND SLOPE FORMATIONS, UNDIVIDED:** Interbedded carbonaceous shale, lignite and buff colored silt, clay and sand. Originally mapped as Ttr-Tongue River Formation with the Slope Formation included.

Tlc **CANNONBALL AND LUDLOW FORMATIONS, UNDIVIDED:** Cannonball Formation-Interbedded yellowish brown, fine-grained sand and medium gray and brownish gray clay shales and silt. Ludlow Formation, originally identified as Tullock Member-Interbedded lignite and brownish gray to light gray silt clay and sand. Present as a thin band along contact with Hell Creek Formation.

CRETACEOUS SYSTEM

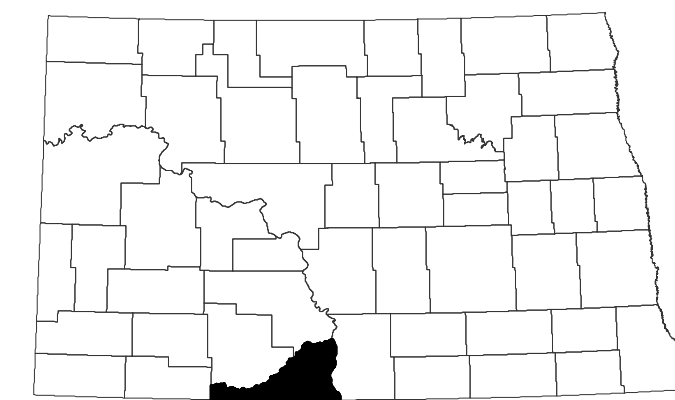
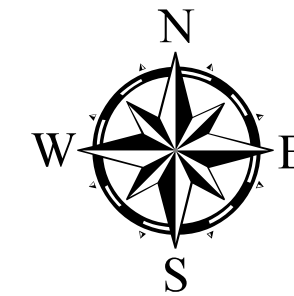
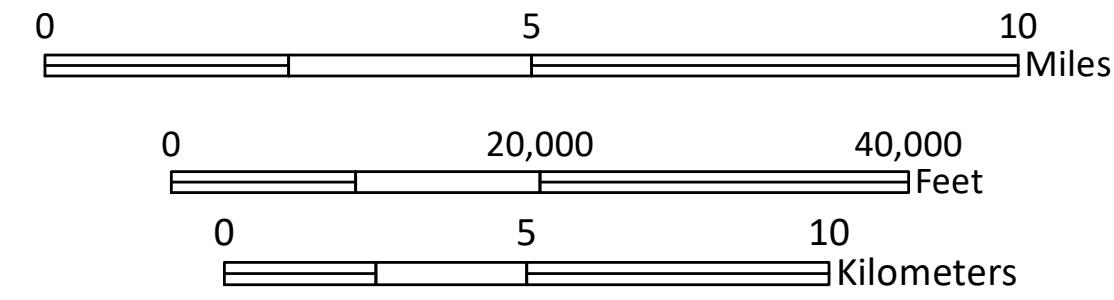
Khc **HELL CREEK FORMATION:** Somber colored fine-grained sand, silt and carbonaceous and bentonitic clays.

Kfh **FOX HILLS FORMATION:** Upper part: yellowish brown to light gray, fine to medium-grained sand. Lower part: Banded beds of light gray and brownish gray silt, sand and clay, and beds of sand, yellowish brown, fine grained.

Kp **PIERRE FORMATION:** Medium to dark gray shale.

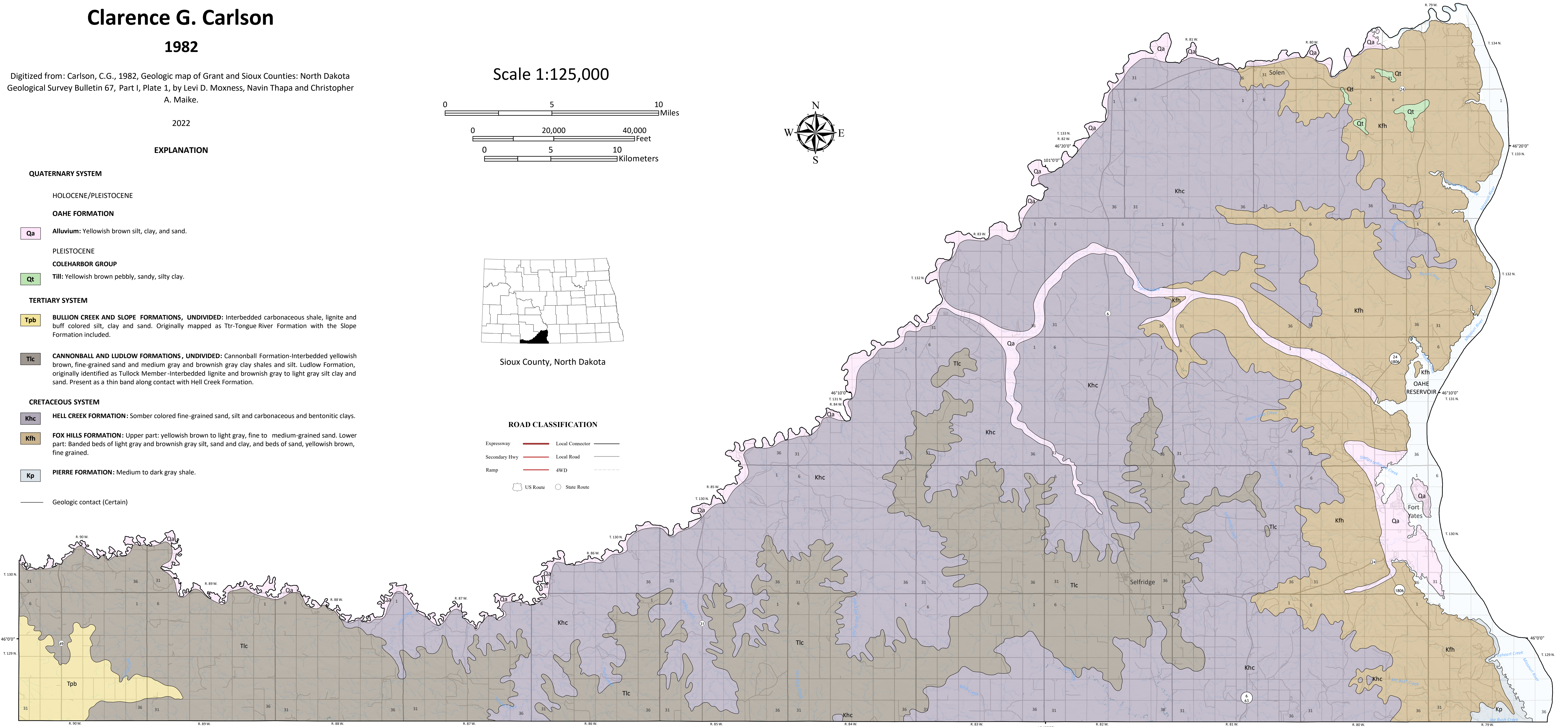
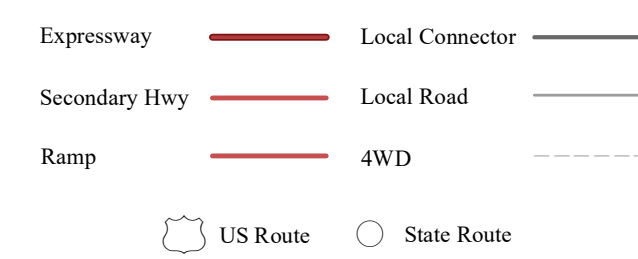
— Geologic contact (Certain)

Scale 1:125,000



Sioux County, North Dakota

ROAD CLASSIFICATION



Updated cartography by Navin Thapa.
Basemap updated using from USGS 7.5 Minute Topo Base.
Modernized stratigraphic nomenclature by Levi D. Moxness.
Source document URL: http://www.swc.state.nd.us/info_edu/reports_and_publications/county_groundwater_studies/

Lambert Conformal Conic Projection
North American 1983 Datum

This material is based upon work supported by the U.S. Geological Survey under Grant No. G21AP10291-00. The views and conclusions contained in this document are those of the authors and should not be interpreted as representing the opinions or policies of the U.S. Geological Survey.