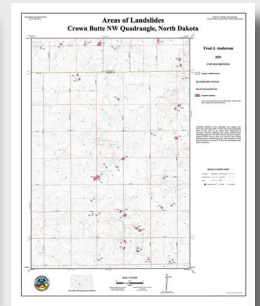
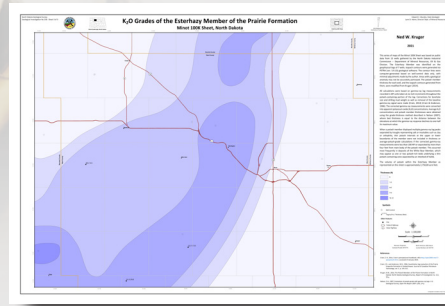
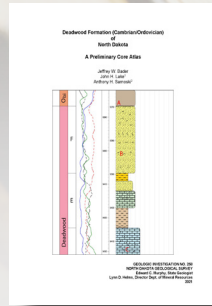
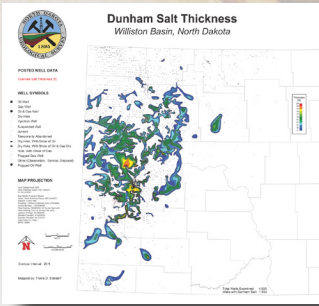


NEW PUBLICATIONS

All Survey publications (maps, posters, and reports) are available for free download from our website (www.dmr.nd.gov/ndgs/Publication_List/). Paper copies of 24K maps are \$5, 100K are \$10, and posters are typically \$15.



Geologic Investigations

- Stolldorf, T., 2021, Dunham Salt Extent and Thickness, Williston Basin, North Dakota: North Dakota Geological Survey Geologic Investigations No. 256, 3 map sheets.
- Bader, J.W., Lake, J.H, Sarnoski, A.H. 2021, Deadwood Formation (Cambrian/Ordovician) of North Dakota, A Preliminary Core Atlas: North Dakota Geological Survey Geologic Investigations No. 257, 12 p.
- Kruger, N. W., 2021, K₂O Grades of Potash Containing Members of the Prairie formation, Minot 100K: North Dakota Geological Survey Geologic Investigations No. 258, 3 map sheets.

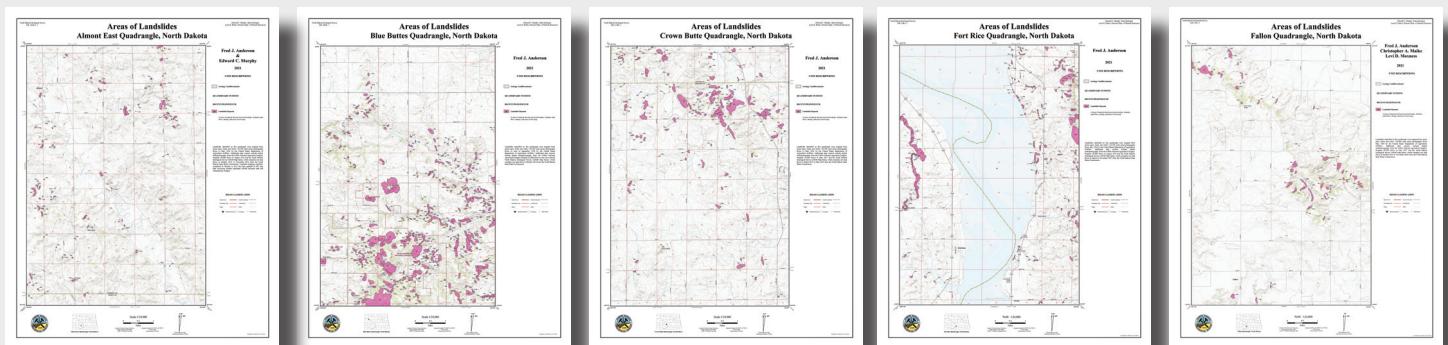
Landslide Maps

- Anderson, F.J., 2021, Areas of Landslides Crown Butte NW Quadrangle, ND Quadrangle: ND Geological Survey 24K Map Series No. CrnB NW - I.
- Anderson, F.J., 2021, Areas of Landslides Crown Butte Quadrangle, ND: ND Geological Survey 24K Map Series No. CrnB .
- Anderson, F.J., 2021, Areas of Landslides Fort Rice Quadrangle, ND: ND Geological Survey 24K Map Series No. FtRc - I.
- Anderson, F.J., 2021, Areas of Landslides Grassy Butte SW Quadrangle, ND: ND Geological Survey 24K Map Series No. GrsB SW - I.
- Anderson, F.J., 2021, Areas of Landslides Hannover NE Quadrangle, ND: ND Geological Survey 24K Map Series No. Hnvr NE - I.
- Anderson, F.J., 2021, Areas of Landslides Hannover NW Quadrangle, ND: ND Geological Survey 24K Map Series No. Hnvr NW - I.
- Anderson, F.J., 2021, Areas of Landslides Hebron SE Quadrangle, ND: ND Geological Survey 24K Map Series No. Hbrn SE - I.
- Anderson, F.J., 2021, Areas of Landslides McKenzie Quadrangle, ND: ND Geological Survey 24K Map Series No. McKn - I.
- Anderson, F.J., 2021, Areas of Landslides Moffit NW Quadrangle, ND: ND Geological Survey 24K Map Series No. Mfft NW .
- Anderson, F.J., 2021, Areas of Landslides Moffit Quadrangle, ND: ND Geological Survey 24K Map Series No. Mfft - I.
- Anderson, F.J., 2021, Areas of Landslides Moffit SE Quadrangle, ND: ND Geological Survey 24K Map Series No. Mfft SE - I.
- Anderson, F.J., 2021, Areas of Landslides Moffit SW Quadrangle, ND: ND Geological Survey 24K Map Series No. Mfft SW.
- Anderson, F.J., 2021, Areas of Landslides Nelson Lake Quadrangle, ND: ND Geological Survey 24K Map Series No. Nlsl.
- Anderson, F.J., 2021, Areas of Landslides New Salem NE Quadrangle, ND: ND Geological Survey 24K Map Series No. NwSl NE - I.

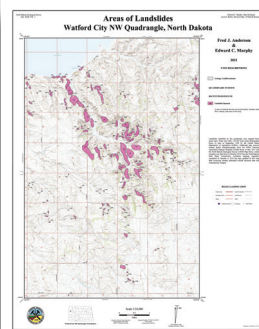
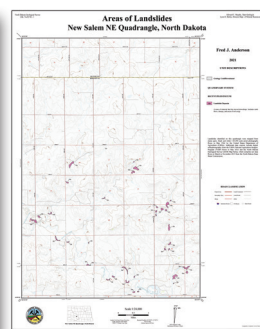
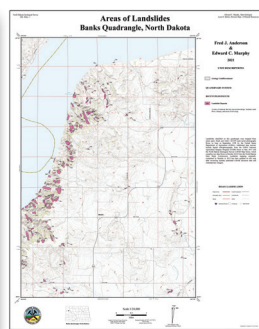
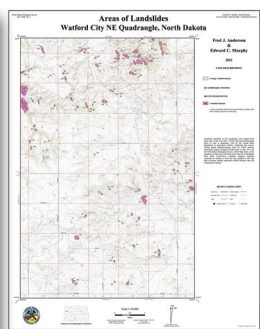
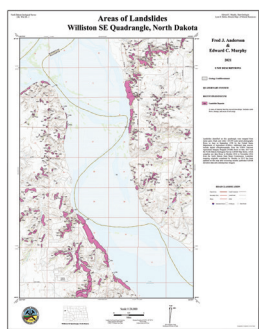
- Anderson, F.J., 2021, Areas of Landslides Solen Quadrangle, ND: ND Geological Survey 24K Map Series No. Soln - I.
- Anderson, F.J., 2021, Areas of Landslides Sterling Quadrangle, ND: ND Geological Survey 24K Map Series No. Stlg - I.
- Anderson, F.J., Moxness, L.D., Maike, C.A., and Murphy, E.C., 2021, Landslide areas in Morton County, ND: ND Geological Survey County Series, Morton – L, 1:125,000.
- Anderson, F.J. and Murphy, E.C., 2021, Areas of Landslides Almont East Quadrangle, ND: ND Geological Survey 24K Map Series No. Almt E - I.
- Anderson, F.J. and Murphy, E.C., 2021, Areas of Landslides Banks Quadrangle, ND: ND Geological Survey 24K Map Series No. Bnks - I.
- Anderson, F.J. and Murphy, E.C., 2021, Areas of Landslides Belden Quadrangle, ND: ND Geological Survey 24K Map Series No. Bldn - I.
- Anderson, F.J. and Murphy, E.C., 2021, Areas of Landslides Belden SE Quadrangle, ND: ND Geological Survey 24K Map Series No. Bldn SE - I.
- Anderson, F.J. and Murphy, E.C., 2021, Areas of Landslides Belden SW Quadrangle, ND: ND Geological Survey 24K Map Series No. Bldn SW - I.
- Anderson, F.J. and Murphy, E.C., 2021, Areas of Landslides Blaisdell Quadrangle, ND: ND Geological Survey 24K Map Series No. Blsl - I.
- Anderson, F.J. and Murphy, E.C., 2021, Areas of Landslides Blue Buttes Quadrangle, ND: ND Geological Survey 24K Map Series No. BluB - I.
- Anderson, F.J. and Murphy, E.C., 2021, Areas of Landslides Blue Buttes SE Quadrangle, ND: ND Geological Survey 24K Map Series No. BluB SE - I.
- Anderson, F.J. and Murphy, E.C., 2021, Areas of Landslides Camp Creek East Quadrangle, ND: ND Geological Survey 24K Map Series No. CmpC E - I.
- Anderson, F.J. and Murphy, E.C., 2021, Areas of Landslides Center Quadrangle, ND: ND Geological Survey 24K Map Series No. Cntr - I.
- Anderson, F.J. and Murphy, E.C., 2021, Areas of Landslides Charlson NE Quadrangle, ND: ND Geological Survey 24K Map Series No. ChrI NE - I.
- Anderson, F.J. and Murphy, E.C., 2021, Areas of Landslides Charlson NW Quadrangle, ND: ND Geological Survey 24K Map Series No.

- ChrI NW - I.
- Anderson, F.J. and Murphy, E.C., 2021, Areas of Landslides Charlson Quadrangle, ND: ND Geological Survey 24K Map Series No. ChrI - I.
- Anderson, F.J. and Murphy, E.C., 2021, Areas of Landslides Charlson SW Quadrangle, ND: ND Geological Survey 24K Map Series No. ChrI SW - I.
- Anderson, F.J. and Murphy, E.C., 2021, Areas of Landslides Chris Creek Quadrangle, ND: ND Geological Survey 24K Map Series No. ChrC - I.
- Anderson, F.J. and Murphy, E.C., 2021, Areas of Landslides Clearwater Lake Quadrangle, ND: ND Geological Survey 24K Map Series No. ClwL - I.
- Anderson, F.J. and Murphy, E.C., 2021, Areas of Landslides Cussicks Spring Quadrangle, ND: ND Geological Survey 24K Map Series No. CsKS - I.
- Anderson, F.J. and Murphy, E.C., 2021, Areas of Landslides Epworth NW Quadrangle, ND: ND Geological Survey 24K Map Series No. Epwr NW - I.
- Anderson, F.J. and Murphy, E.C., 2021, Areas of Landslides Epworth Quadrangle, ND: ND Geological Survey 24K Map Series No. Epwr - I.
- Anderson, F.J. and Murphy, E.C., 2021, Areas of Landslides Epworth SE Quadrangle, ND: ND Geological Survey 24K Map Series No. Epwr SE - I.
- Anderson, F.J. and Murphy, E.C., 2021, Areas of Landslides Flasher Quadrangle, ND: ND Geological Survey 24K Map Series No. Flsr - I.
- Anderson, F.J. and Murphy, E.C., 2021, Areas of Landslides Golden Valley NE Quadrangle, ND: ND Geological Survey 24K Map Series No. GldV NE - I.
- Anderson, F.J. and Murphy, E.C., 2021, Areas of Landslides Golden Valley NW Quadrangle, ND: ND Geological Survey 24K Map Series No. GldV NW - I.
- Anderson, F.J. and Murphy, E.C., 2021, Areas of Landslides Golden Valley Quadrangle, ND: ND Geological Survey 24K Map Series No. GldV - I.
- Anderson, F.J. and Murphy, E.C., 2021, Areas of Landslides Hay Flat Quadrangle, ND: ND Geological Survey 24K Map Series No. HyFl - I.
- Anderson, F.J. and Murphy, E.C., 2021, Areas of Landslides Hebron Quadrangle, ND: ND Geological Survey 24K Map Series No. Hbrn - I.
- Anderson, F.J. and Murphy, E.C., 2021, Areas of Landslides Keene Quadrangle, ND: ND Geological Survey 24K Map Series No. Kene - I.
- Anderson, F.J. and Murphy, E.C., 2021, Areas of Landslides Lake Jessie Quadrangle, ND: ND Geological Survey 24K Map Series No. LkJs - I.
- Anderson, F.J. and Murphy, E.C., 2021, Areas of Landslides Lostwood Quadrangle, ND: ND Geological Survey 24K Map Series No. Lstw - I.
- Anderson, F.J. and Murphy, E.C., 2021, Areas of Landslides New Town Quadrangle, ND: ND Geological Survey 24K Map Series No. NwTn - I.
- Anderson, F.J. and Murphy, E.C., 2021, Areas of Landslides New Town SE Quadrangle, ND: ND Geological Survey 24K Map Series No. NwTn SE - I.
- Anderson, F.J. and Murphy, E.C., 2021, Areas of Landslides New Town SW Quadrangle, ND: ND Geological Survey 24K Map Series No. NwTn SW - I.
- Anderson, F.J. and Murphy, E.C., 2021, Areas of Landslides Nygren Dam Quadrangle, ND: ND Geological Survey 24K Map Series No. NynD - I.
- Anderson, F.J. and Murphy, E.C., 2021, Areas of Landslides Otter Creek East Quadrangle, ND: ND Geological Survey 24K Map Series No. OtrC E - I.
- Anderson, F.J. and Murphy, E.C., 2021, Areas of Landslides Palermo NE Quadrangle, ND: ND Geological Survey 24K Map Series No. Plrm NE - I.
- Anderson, F.J. and Murphy, E.C., 2021, Areas of Landslides Palermo NW Quadrangle, ND: ND Geological Survey 24K Map Series No. Plrm NW - I.
- Anderson, F.J. and Murphy, E.C., 2021, Areas of Landslides Palermo Quadrangle, ND: ND Geological Survey 24K Map Series No. Plrm - I.
- Anderson, F.J. and Murphy, E.C., 2021, Areas of Landslides Parshall NE Quadrangle, ND: ND Geological Survey 24K Map Series No. Prsh NE - I.
- Anderson, F.J. and Murphy, E.C., 2021, Areas of Landslides Parshall Quadrangle, ND: ND Geological Survey 24K Map Series No. Prsh - I.
- Anderson, F.J. and Murphy, E.C., 2021, Areas of Landslides Parshall SE Quadrangle, ND: ND Geological Survey 24K Map Series No. Prsh SE - I.
- Anderson, F.J. and Murphy, E.C., 2021, Areas of Landslides Parshall SW Quadrangle, ND: ND Geological Survey 24K Map Series No. Prsh SW - I.
- Anderson, F.J. and Murphy, E.C., 2021, Areas of Landslides Raub NW Quadrangle, ND: ND Geological Survey 24K Map Series No. Raub NW - I.
- Anderson, F.J. and Murphy, E.C., 2021, Areas of Landslides Raub Quadrangle, ND: ND Geological Survey 24K Map Series No. Raub - I.
- Anderson, F.J. and Murphy, E.C., 2021, Areas of Landslides Raub SE Quadrangle, ND: ND Geological Survey 24K Map Series No. Raub SE - I.
- Anderson, F.J. and Murphy, E.C., 2021, Areas of Landslides Robinson Lake Quadrangle, ND: ND Geological Survey 24K Map Series No. RbsL - I.
- Anderson, F.J. and Murphy, E.C., 2021, Areas of Landslides Ross NW Quadrangle, ND: ND Geological Survey 24K Map Series No. Ross NW - I.
- Anderson, F.J. and Murphy, E.C., 2021, Areas of Landslides Saddle Butte Quadrangle, ND: ND Geological Survey 24K Map Series No. SdlB - I.
- Anderson, F.J. and Murphy, E.C., 2021, Areas of Landslides Sanish NW Quadrangle, ND: ND Geological Survey 24K Map Series No. SnsH NW - I.
- Anderson, F.J. and Murphy, E.C., 2021, Areas of Landslides Shell Creek Bay Quadrangle, ND: ND Geological Survey 24K Map Series No. ShCB - I.
- Anderson, F.J. and Murphy, E.C., 2021, Areas of Landslides Shell Lake Quadrangle, ND: ND Geological Survey 24K Map Series No. ShlL - I.
- Anderson, F.J. and Murphy, E.C., 2021, Areas of Landslides Sikes Dam Quadrangle, ND: ND Geological Survey 24K Map Series No. SksD - I.

- Anderson, F.J. and Murphy, E.C., 2021, Areas of Landslides String Buttes Quadrangle, ND: ND Geological Survey 24K Map Series No. StgB - I.
- Anderson, F.J. and Murphy, E.C. 2021, Areas of Landslides Sweet Briar Quadrangle, ND: ND Geological Survey 24K Map Series No. SwtB - I.
- Anderson, F.J. and Murphy, E.C., 2021, Areas of Landslides Timber Prong Creek Quadrangle, ND: ND Geological Survey 24K Map Series No. TmPC - I.
- Anderson, F.J. and Murphy, E.C., 2021, Areas of Landslides Twin Buttes Quadrangle, ND: ND Geological Survey 24K Map Series No. TwnB - I.
- Anderson, F.J. and Murphy, E.C., 2021, Areas of Landslides Watford City NE Quadrangle, ND: ND Geological Survey 24K Map Series No. WfdC NE - I.
- Anderson, F.J. and Murphy, E.C., 2021, Areas of Landslides Watford City NW Quadrangle, ND: ND Geological Survey 24K Map Series No. WfdC NW - I.
- Anderson, F.J. and Murphy, E.C., 2021, Areas of Landslides White Earth Quadrangle, ND: ND Geological Survey 24K Map Series No. WhtE - I.
- Anderson, F.J. and Murphy, E.C., 2021, Areas of Landslides Williston SE Quadrangle, ND: ND Geological Survey 24K Map Series No. Wlst SE - I.
- Anderson, F.J. and Murphy, E.C., 2021, Areas of Landslides Williston SW Quadrangle, ND: ND Geological Survey 24K Map Series No. Wlst SW - I.
- Anderson, F.J., Maike, C.A., Moxness, L.D., 2021, Areas of Landslides Fallon Quadrangle, ND: ND Geological Survey 24K Map Series No. FlIn - I.
- Maike, C.A., 2021, Areas of Landslides Aneta Quadrangle, ND: ND Geological Survey 24K Map Series No. Anta - I.
- Maike, C.A., 2021, Areas of Landslides Ardoch Quadrangle, ND: ND Geological Survey 24K Map Series No. ArdH - I.
- Maike, C.A., 2021, Areas of Landslides Arthur Quadrangle, ND: ND Geological Survey 24K Map Series No. Artr - I.
- Maike, C.A., 2021, Areas of Landslides Arthur SE Quadrangle, ND: ND Geological Survey 24K Map Series No. Artr SE - I.
- Maike, C.A., 2021, Areas of Landslides Arvilla Quadrangle, ND: ND Geological Survey 24K Map Series No. Arva - I.
- Maike, C.A., 2021, Areas of Landslides Ayr NE Quadrangle, ND: ND Geological Survey 24K Map Series No. Ayr NE - I.
- Maike, C.A., 2021, Areas of Landslides Ayr NW Quadrangle, ND: ND Geological Survey 24K Map Series No. Ayr NW - I.
- Maike, C.A., 2021, Areas of Landslides Ayr Quadrangle, ND: ND Geological Survey 24K Map Series No. Ayr - I.
- Maike, C.A., 2021, Areas of Landslides Ayr SE Quadrangle, ND: ND Geological Survey 24K Map Series No. Ayr SE - I.
- Maike, C.A., 2021, Areas of Landslides Blanchard Quadrangle, ND: ND Geological Survey 24K Map Series No. Blnd - I.
- Maike, C.A., 2021, Areas of Landslides Buxton NW Quadrangle, ND: ND Geological Survey 24K Map Series No. BxtN NW - I.
- Maike, C.A., 2021, Areas of Landslides Buxton Quadrangle, ND: ND Geological Survey 24K Map Series No. BxtN - I.
- Maike, C.A., 2021, Areas of Landslides Buxton SW Quadrangle, ND: ND Geological Survey 24K Map Series No. BxtN SW - I.
- Maike, C.A., 2021, Areas of Landslides Casselton Quadrangle, ND: ND Geological Survey 24K Map Series No. CslN - I.
- Maike, C.A., 2021, Areas of Landslides Casselton SE Quadrangle, ND: ND Geological Survey 24K Map Series No. CslN SE - I.
- Maike, C.A., 2021, Areas of Landslides Chaffee Quadrangle, ND: ND Geological Survey 24K Map Series No. Chfe - I.
- Maike, C.A., 2021, Areas of Landslides Colgate Quadrangle, ND: ND Geological Survey 24K Map Series No. Clgt - I.
- Maike, C.A., 2021, Areas of Landslides Durbin Quadrangle, ND: ND Geological Survey 24K Map Series No. Drbn - I.
- Maike, C.A., 2021, Areas of Landslides Emerado Quadrangle, ND: ND Geological Survey 24K Map Series No. Emrd - I.
- Maike, C.A., 2021, Areas of Landslides Emerado SE Quadrangle, ND: ND Geological Survey 24K Map Series No. Emrd SE - I.
- Maike, C.A., 2021, Areas of Landslides Emerado SW Quadrangle, ND: ND Geological Survey 24K Map Series No. Emrd SW - I.
- Maike, C.A., 2021, Areas of Landslides Finley NE Quadrangle, ND: ND Geological Survey 24K Map Series No. Fnly NE - I.
- Maike, C.A., 2021, Areas of Landslides Finley Quadrangle, ND: ND Geological Survey 24K Map Series No. Fnly - I.
- Maike, C.A., 2021, Areas of Landslides Galesburg NW Quadrangle, ND: ND Geological Survey 24K Map Series No. Glsb NW - I.
- Maike, C.A., 2021, Areas of Landslides Galesburg Quadrangle, ND: ND Geological Survey 24K Map Series No. Glsb - I.
- Maike, C.A., 2021, Areas of Landslides Galesburg SE Quadrangle, ND: ND Geological Survey 24K Map Series No. Glsb SE - I.
- Maike, C.A., 2021, Areas of Landslides Golden Lake Quadrangle, ND: ND Geological Survey 24K Map Series No. GlDL - I.
- Maike, C.A., 2021, Areas of Landslides Grand Forks SW Quadrangle, ND: ND Geological Survey 24K Map Series No. GrFk SW - I.
- Maike, C.A., 2021, Areas of Landslides Grandin Quadrangle, ND: ND Geological Survey 24K Map Series No. Grnd - I.
- Maike, C.A., 2021, Areas of Landslides Hatton Quadrangle, ND: ND Geological Survey 24K Map Series No. HttN - I.
- Maike, C.A., 2021, Areas of Landslides Holmes Quadrangle, ND: ND Geological Survey 24K Map Series No. Hlms - I.
- Maike, C.A., 2021, Areas of Landslides Hope NE Quadrangle, ND: ND Geological Survey 24K Map Series No. Hope NE - I.
- Maike, C.A., 2021, Areas of Landslides Hope Quadrangle, ND: ND Geological Survey 24K Map Series No. Hope - I.



- Maike, C.A., 2021, Areas of Landslides Hope SE Quadrangle, ND: ND Geological Survey 24K Map Series No. Hope SE.
- Maike, C.A., 2021, Areas of Landslides Horseshoe Lake Quadrangle, ND: ND Geological Survey 24K Map Series No. HshL.
- Maike, C.A., 2021, Areas of Landslides Hunter Quadrangle, ND: ND Geological Survey 24K Map Series No. Hntr - I.
- Maike, C.A., 2021, Areas of Landslides Kelly Quadrangle, ND: ND Geological Survey 24K Map Series No. Kily - I.
- Maike, C.A., 2021, Areas of Landslides Kelso Quadrangle, ND: ND Geological Survey 24K Map Series No. Klso - I.
- Maike, C.A., 2021, Areas of Landslides Kempton Quadrangle, ND: ND Geological Survey 24K Map Series No. Kmpt - I.
- Maike, C.A., 2021, Areas of Landslides Lake Pickard Quadrangle, ND: ND Geological Survey 24K Map Series No. LkPk - I.
- Maike, C.A., 2021, Areas of Landslides Larimore East Quadrangle, ND: ND Geological Survey 24K Map Series No. Lmr E - I.
- Maike, C.A., 2021, Areas of Landslides Larimore SW Quadrangle, ND: ND Geological Survey 24K Map Series No. Lmr SW.
- Maike, C.A., 2021, Areas of Landslides Larimore West Quadrangle, ND: ND Geological Survey 24K Map Series No. Lmr W - I.
- Maike, C.A., 2021, Areas of Landslides Logan Center Quadrangle, ND: ND Geological Survey 24K Map Series No. LgnC - I.
- Maike, C.A., 2021, Areas of Landslides Mahto NE Quadrangle, ND: ND Geological Survey 24K Map Series No. Mhto NE.
- Maike, C.A., 2021, Areas of Landslides Mahto NW Quadrangle, ND: ND Geological Survey 24K Map Series No. Mhto NW.
- Maike, C.A., 2021, Areas of Landslides Mapleton Quadrangle, ND: ND Geological Survey 24K Map Series No. Mptn - I.
- Maike, C.A., 2021, Areas of Landslides McLaughlin NE Quadrangle, ND: ND Geological Survey 24K Map Series No. McLn NE - I.
- Maike, C.A., 2021, Areas of Landslides Niagara Quadrangle, ND: ND Geological Survey 24K Map Series No. Ngra - I.
- Maike, C.A., 2021, Areas of Landslides Niagara SW Quadrangle, ND: ND Geological Survey 24K Map Series No. Ngra SW.
- Maike, C.A., 2021, Areas of Landslides Northwood NW Quadrangle, ND: ND Geological Survey 24K Map Series No. Nrwd NW - I.
- Maike, C.A., 2021, Areas of Landslides Page Quadrangle, ND: ND Geological Survey 24K Map Series No. Page - I.
- Maike, C.A., 2021, Areas of Landslides Page SE Quadrangle, ND: ND Geological Survey 24K Map Series No. Page SE - I.
- Maike, C.A., 2021, Areas of Landslides Page SW Quadrangle, ND: ND Geological Survey 24K Map Series No. Page SW.
- Maike, C.A. and Moxness, L.D., 2021, Areas of Landslides Fort Yates Quadrangle, ND: ND Geological Survey 24K Map Series No. FtYt - I.
- Maike, C.A., 2021, Areas of Landslides Reynolds Quadrangle, ND: ND Geological Survey 24K Map Series No. Rynl - I.
- Maike, C.A., 2021, Areas of Landslides Sharon Quadrangle, ND: ND Geological Survey 24K Map Series No. Shrn - I.
- Maike, C.A., 2021, Areas of Landslides Sherbrooke Quadrangle, ND: ND Geological Survey 24K Map Series No. Shrb - I.
- Maike, C.A., 2021, Areas of Landslides Wheatland Quadrangle, ND: ND Geological Survey 24K Map Series No. Wlnd - I.
- Maike, C.A. and Moxness, L.D., 2021, Areas of Landslides Fort Yates SE Quadrangle, ND: ND Geological Survey 24K Map Series No. FtYt SE - I.
- Maike, C.A. and Moxness, L.D., 2021, Areas of Landslides Selfridge SE Quadrangle, ND: ND Geological Survey 24K Map Series No. Slfr SE - I.
- Maike, C.A. and Murphy, E.C., 2021, Areas of Landslides Argusville Quadrangle, ND: ND Geological Survey 24K Map Series No. Arge - I.
- Maike, C.A. and Murphy, E.C., 2021, Areas of Landslides Gardner Quadrangle, ND: ND Geological Survey 24K Map Series No. Gdnr - I.
- Maike, C.A. and Murphy, E.C., 2021, Areas of Landslides Halstad SW Quadrangle, ND: ND Geological Survey 24K Map Series No. Hstd SW - I.
- Maike, C.A., Moxness, L.D., and Anderson, F.J., 2021, Areas of Landslide Activity, Vang Quadrangle, ND: ND Geological Survey 24K Map Series No. Vang - I3.
- Maike, C.A., Moxness, L.D., and Anderson, F.J., 2021, Areas of Landslide Activity, Olga NW Quadrangle, ND: ND Geological Survey 24K Map Series No. Olga NW - I3.
- Moxness, L.D., 2021, Areas of Landslides Absaraka Quadrangle, ND: ND Geological Survey 24K Map Series No. Absa - I.
- Moxness, L.D., 2021, Areas of Landslides Alice Quadrangle, ND: ND Geological Survey 24K Map Series No. Alce - I.
- Moxness, L.D., 2021, Areas of Landslides Ashley East Quadrangle, ND: ND Geological Survey 24K Map Series No. Ashy E - I.
- Moxness, L.D., 2021, Areas of Landslides Ashley NE Quadrangle, ND: ND Geological Survey 24K Map Series No. Ashy NE.
- Moxness, L.D., 2021, Areas of Landslides Ashley West Quadrangle, ND: ND Geological Survey 24K Map Series No. Ashy W - I.
- Moxness, L.D., 2021, Areas of Landslides Buffalo Quadrangle, ND: ND Geological Survey 24K Map Series No. Bflo - I.
- Moxness, L.D., 2021, Areas of Landslides Burnstad Quadrangle, ND: ND Geological Survey 24K Map Series No. Brnd - I.
- Moxness, L.D., 2021, Areas of Landslides Coldwater Lake NW Quadrangle, ND: ND Geological Survey 24K Map Series No. Cdwl NW - I.
- Moxness, L.D., 2021, Areas of Landslides Coldwater Lake SW Quadrangle, ND: ND Geological Survey 24K Map Series No. Cdwl SW - I.
- Moxness, L.D., 2021, Areas of Landslides Danzig Quadrangle, ND: ND Geological Survey 24K Map Series No. Dnzg - I.



- Moxness, L.D., 2021, Areas of Landslides Embden Quadrangle, ND: ND Geological Survey 24K Map Series No. Emdn - I.
- Moxness, L.D., 2021, Areas of Landslides Fredonia NE Quadrangle, ND: ND Geological Survey 24K Map Series No. Frdn NE - I.
- Moxness, L.D., 2021, Areas of Landslides Fredonia NW Quadrangle, ND: ND Geological Survey 24K Map Series No. Frdn NW - I.
- Moxness, L.D., 2021, Areas of Landslides Fredonia Quadrangle, ND: ND Geological Survey 24K Map Series No. Frdn - I.
- Moxness, L.D., 2021, Areas of Landslides Guyson Quadrangle, ND: ND Geological Survey 24K Map Series No. Gysn - I.
- Moxness, L.D., 2021, Areas of Landslides Lehr NE Quadrangle, ND: ND Geological Survey 24K Map Series No. Lehr NE.
- Moxness, L.D., 2021, Areas of Landslides Lehr NW Quadrangle, ND: ND Geological Survey 24K Map Series No. Lehr NW.
- Moxness, L.D., 2021, Areas of Landslides Lehr Quadrangle, ND: ND Geological Survey 24K Map Series No. Lehr - I.
- Moxness, L.D., 2021, Areas of Landslides Lehr SW Quadrangle, ND: ND Geological Survey 24K Map Series No. Lehr SW.
- Moxness, L.D., 2021, Areas of Landslides Long Lake NW Quadrangle, ND: ND Geological Survey 24K Map Series No. LngL NW - I.
- Moxness, L.D., 2021, Areas of Landslides May Lake NW Quadrangle, ND: ND Geological Survey 24K Map Series No. MayL NW - I.
- Moxness, L.D., 2021, Areas of Landslides May Lake Quadrangle, ND: ND Geological Survey 24K Map Series No. MayL - I.
- Moxness, L.D., 2021, Areas of Landslides May Lake SE Quadrangle, ND: ND Geological Survey 24K Map Series No. MayL SE - I.
- Moxness, L.D., 2021, Areas of Landslides Schumacher Lake NE Quadrangle, ND: ND Geological Survey 24K Map Series No. SmrL NE - I.
- Moxness, L.D., 2021, Areas of Landslides Tower City Quadrangle, ND: ND Geological Survey 24K Map Series No. TwrC - I.
- Moxness, L.D., 2021, Areas of Landslides Tower City SW Quadrangle, ND: ND Geological Survey 24K Map Series No. TwrC SW - I.
- Moxness, L.D., 2021, Areas of Landslides Weisser Dam East Quadrangle, ND: ND Geological Survey 24K Map Series No. WssD E - I.
- Moxness, L.D., 2021, Areas of Landslides Wishek NE Quadrangle, ND: ND Geological Survey 24K Map Series No. Wshk NE.
- Moxness, L.D., 2021, Areas of Landslides Wishek Quadrangle, ND: ND Geological Survey 24K Map Series No. Wshk - I.
- Moxness, L.D., 2021, Areas of Landslides Wishek SW Quadrangle, ND: ND Geological Survey 24K Map Series No. Wshk SW.
- Moxness, L.D., 2021, Areas of Landslides Wolff Lake Quadrangle, ND: ND Geological Survey 24K Map Series No. Wlfl - I.
- Moxness, L.D., 2021, Areas of Landslides Zeeland Quadrangle, ND: ND Geological Survey 24K Map Series No. Zlnd - I.
- Moxness, L.D., and Murphy, E.C., 2021, Areas of Landslides Bear Butte Quadrangle, ND: ND Geological Survey 24K Map Series No. RdWD - I.
- Moxness, L.D., and Murphy, E.C., 2021, Areas of Landslides Lone Butte NW Quadrangle, ND: ND Geological Survey 24K Map Series No. LonB NW - I.
- Moxness, L.D., and Murphy, E.C., 2021, Areas of Landslides Red Wing Creek Quadrangle, ND: ND Geological Survey 24K Map Series No. BarB - I.
- Moxness, L.D., and Murphy, E.C., 2021, Areas of Landslides Stocke Butte Quadrangle, ND: ND Geological Survey 24K Map Series No. StkB - I.
- Moxness, L.D., and Murphy, E.C., 2021, Areas of Landslides Teepee Buttes Quadrangle, ND: ND Geological Survey 24K Map Series No. TpeB - I.

Reports of Investigation

- Anderson, F.J., 2021, Evaluation of Windblown Sand Deposits in Eastern North Dakota for Potential Use as Proppant: North Dakota Geological Survey Report of Investigation no. 127, 66 p.
- Moxness, L.D., Murphy, E.C., and Kruger, N.W., 2021, Critical Mineral Concentrations in the Sentinel Butte Formation, Tracy Mountain, North Dakota: North Dakota Geological Survey Report of Investigation No. 128, 65 p.
- Nesheim, T.O., 2021, Sedimentology, Stratigraphy, and Regional Facies Architecture of the Middle Three Forks Formation: North Dakota Geological Survey Report of Investigation No. 129, 40 p.

Surface Geology Maps

- Anderson, F.J., 2021, Surface Geology of the Mapleton Quadrangle, North Dakota: North Dakota Geological Survey, 24K Map Series No. Mptn-sg.
- Manz, L.A., 2021, Surface Geology of the Clear Lake Quadrangle, North Dakota: North Dakota Geological Survey 24K Map Series No. ClrL - sg.
- Manz, L.A., 2021, Surface Geology of the Driscoll Quadrangle, North Dakota: North Dakota Geological Survey 24K Map Series No. DrsI - sg.

Outside Publications

- Van Vranken, N. and Boyd. 2021. The first *in situ* collection of a mosasaurine from the marine Breien Member of the Hell Creek Formation in south-central North Dakota, USA. *PaleoBios*, 38. ucmp_paleobios_54460.

