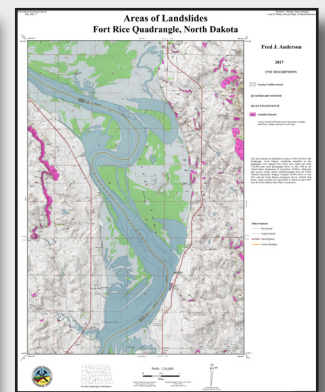
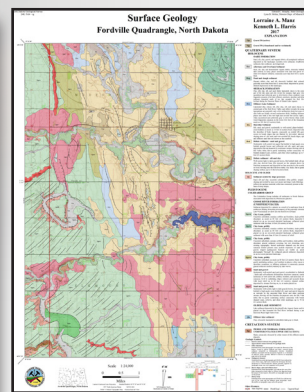
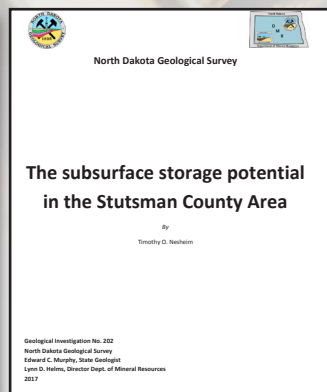
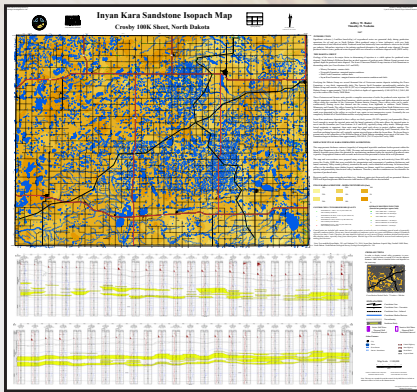


NEW PUBLICATIONS

All Survey publications (maps, posters, and reports) are available for free download from our website (www.dmr.nd.gov/ndgs/Publication_List/). Paper copies of 24K maps are \$5, 100K are \$10, and posters are typically \$15.



Geologic Investigations

- Bader, J.W. and Nesheim, T.O., 2017, Inyan Kara Sandstone Isopach Map, Crosby 100K Sheet, North Dakota: North Dakota Geological Survey Geologic Investigations 201.
- Nesheim, T.O., 2017, The subsurface storage potential in the Stutsman County area: North Dakota Geological Survey Geological Investigations No. 202, 16 p.

Surface Maps

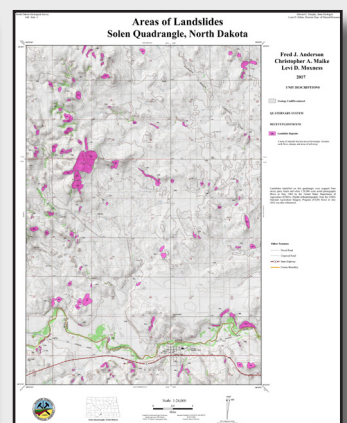
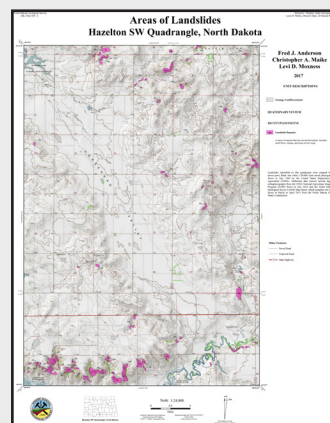
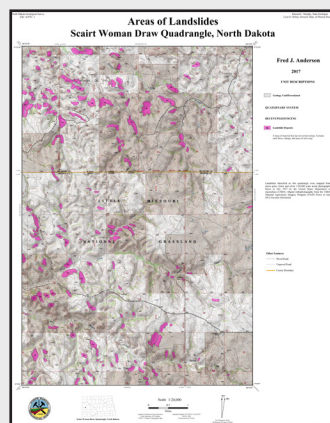
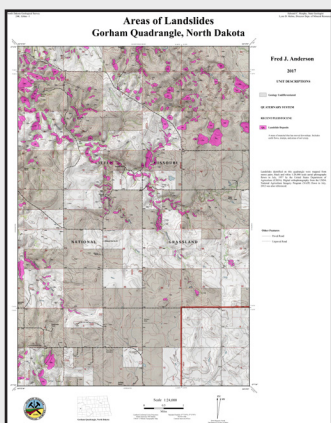
- Manz, L.A., 2017, Surface Geology of the Edinburg Quadrangle, North Dakota: North Dakota Geological Survey 24K Map Series No. Edbg – sg.
- Manz, L.A., 2017, Surface Geology of the Fordville Quadrangle, North Dakota: North Dakota Geological Survey 24K Map Series No. Fdvl – sg.
- Manz, L.A., 2017, Surface Geology of the Inkster Quadrangle, North Dakota: North Dakota Geological Survey 24K Map Series No. Inkr – sg.

Landslide Maps

- Anderson, F.J., 2017, Areas of Landslides Big Meadow Quadrangle, ND Quadrangle: North Dakota Geological Survey 24K Map Series No. BgMw – I.
- Anderson, F.J., 2017, Areas of Landslides Columbus Quadrangle, ND Quadrangle: North Dakota Geological Survey 24K Map Series No. Clmb – I.
- Anderson, F.J., 2017, Areas of Landslides Fairfield Quadrangle, ND Quadrangle: North Dakota Geological Survey 24K Map Series No. Frfd – I.
- Anderson, F.J., 2017, Areas of Landslides Fort Rice Quadrangle, ND Quadrangle: North Dakota Geological Survey 24K Map Series No. FtRc – I.

- Anderson, F.J., 2017, Areas of Landslides Gorham Quadrangle, ND Quadrangle: North Dakota Geological Survey 24K Map Series No. Grhm – I.
- Anderson, F.J., 2017, Areas of Landslides Grassy Butte SE Quadrangle, ND Quadrangle: North Dakota Geological Survey 24K Map Series No. GrsB SE – I.
- Anderson, F.J., 2017, Areas of Landslides Grassy Butte SW Quadrangle, ND Quadrangle: North Dakota Geological Survey 24K Map Series No. GrsB SW – I.
- Anderson, F.J., 2017, Areas of Landslides Hettinger North Quadrangle, ND Quadrangle: North Dakota Geological Survey 24K Map Series No. Htgr N – I.
- Anderson, F.J., 2017, Areas of Landslides Hungry Man Butte Quadrangle, ND Quadrangle: North Dakota Geological Survey 24K Map Series No. HnMB – I.
- Anderson, F.J., 2017, Areas of Landslides McGregor Quadrangle, ND Quadrangle: North Dakota Geological Survey 24K Map Series No. McGr – I.
- Anderson, F.J., 2017, Areas of Landslides Medicine Butte SW Quadrangle, ND Quadrangle: North Dakota Geological Survey 24K Map Series No. MdcB SW – I.
- Anderson, F.J., 2017, Areas of Landslides Medicine Butte Quadrangle, ND Quadrangle: North Dakota Geological Survey 24K Map Series No. MdcB – I.
- Anderson, F.J., 2017, Areas of Landslides New Salem Quadrangle, ND Quadrangle: North Dakota Geological Survey 24K Map Series No. NwSI – I.
- Anderson, F.J., 2017, Areas of Landslides North Almont Quadrangle, ND Quadrangle: North Dakota Geological Survey 24K Map Series No. Nalm – I.

- Anderson, F.J., 2017, Areas of Landslides Scairt Woman Draw Quadrangle, ND Quadrangle: North Dakota Geological Survey 24K Map Series No. ScWD – I.
- Anderson, F.J., 2017, Areas of Landslides Stampede Quadrangle, ND Quadrangle: North Dakota Geological Survey 24K Map Series No. Stmp-1.
- Anderson, F.J., 2017, Areas of Landslides Taylor Butte SE Quadrangle, ND Quadrangle: North Dakota Geological Survey 24K Map Series No. TmBL – I.
- Anderson, F.J., 2017, Areas of Landslides Tom Berg Lake Quadrangle, ND Quadrangle: North Dakota Geological Survey 24K Map Series No. TmBL – I.
- Anderson, F.J., Maike, C.A., and Moxness, L.D., 2017, Areas of Landslides Cannon Ball Quadrangle, ND Quadrangle: North Dakota Geological Survey 24K Map Series No. CnnB – I.
- Anderson, F.J., Maike, C.A., and Moxness, L.D., 2017, Areas of Landslides Cannon Ball NW Quadrangle, ND Quadrangle: North Dakota Geological Survey 24K Map Series No. CnnB NW – I.
- Anderson, F.J., Maike, C.A., and Moxness, L.D., 2017, Areas of Landslides Fallon Quadrangle, ND Quadrangle: North Dakota Geological Survey 24K Map Series No. FlIn – I.
- Anderson, F.J., Maike, C.A., and Moxness, L.D., 2017, Areas of Landslides Fallon NE Quadrangle, ND Quadrangle: North Dakota Geological Survey 24K Map Series No. FlIn NE – I.
- Anderson, F.J., Maike, C.A., and Moxness, L.D., 2017, Areas of Landslides Grassna NE Quadrangle, ND Quadrangle: North Dakota Geological Survey 24K Map Series No. Grsa NE – I.
- Anderson, F.J., Maike, C.A., and Moxness, L.D., 2017, Areas of Landslides Hazelton NW Quadrangle, ND Quadrangle: North Dakota Geological Survey 24K Map Series No. HztN NW – I.
- Anderson, F.J., Maike, C.A., and Moxness, L.D., 2017, Areas of Landslides Hazelton SW Quadrangle, ND Quadrangle: North Dakota Geological Survey 24K Map Series No. HztN SW – I.
- Anderson, F.J., Maike, C.A., and Moxness, L.D., 2017, Areas of Landslides Herreid NE Quadrangle, ND Quadrangle: North Dakota Geological Survey 24K Map Series No. Hrrd NE – I.
- Anderson, F.J., Maike, C.A., and Moxness, L.D., 2017, Areas of Landslides Herreid NW Quadrangle, ND Quadrangle: North Dakota Geological Survey 24K Map Series No. Hrrd NW – I.
- Anderson, F.J., Maike, C.A., and Moxness, L.D., 2017, Areas of Landslides Huff Quadrangle, ND Quadrangle: North Dakota Geological Survey 24K Map Series No. Huff – I.
- Anderson, F.J., Maike, C.A., and Moxness, L.D., 2017, Areas of Landslides Saint Anthony Quadrangle, ND Quadrangle: North Dakota Geological Survey 24K Map Series No. StAn – I.
- Anderson, F.J., Maike, C.A., and Moxness, L.D., 2017, Areas of Landslides Solen Quadrangle, ND Quadrangle: North Dakota Geological Survey 24K Map Series No. Soln – I.
- Anderson, F.J., Maike, C.A., and Moxness, L.D., 2017, Areas of Landslides Strasburg Quadrangle, ND Quadrangle: North Dakota Geological Survey 24K Map Series No. Stbg – I .
- Anderson, F.J., Maike, C.A., and Moxness, L.D., 2017, Areas of Landslides Temvik Quadrangle, ND Quadrangle: North Dakota Geological Survey 24K Map Series No. Tmvk – I.
- Anderson, F.J., Maike, C.A., and Moxness, L.D., 2017, Areas of Landslides The Hogback Quadrangle, ND Quadrangle: North Dakota Geological Survey 24K Map Series No. THog – I.
- Anderson, F.J., Maike, C.A., and Moxness, L.D., 2017, Areas of Landslides Westfield Quadrangle, ND Quadrangle: North Dakota Geological Survey 24K Map Series No. Wfld – I.
- Maike, C.A., 2017, Areas of Landslides Atcoal Quadrangle, ND Quadrangle: North Dakota Geological Survey 24K Map Series No. Atcl – I.
- Maike, C.A., 2017, Areas of Landslides Beaver Lake Quadrangle, ND Quadrangle: North Dakota Geological Survey 24K Map Series No. BvrL – I.
- Maike, C.A., 2017, Areas of Landslides Columbus SE Quadrangle, ND Quadrangle: North Dakota Geological Survey 24K Map Series No. Clmb SE – I.
- Maike, C.A., 2017, Areas of Landslides Columbus SW Quadrangle, ND Quadrangle: North Dakota Geological Survey 24K Map Series No. Clmb SW – I.
- Maike, C.A., 2017, Areas of Landslides Greenway (SD) Quadrangle, ND Quadrangle: North Dakota Geological Survey 24K Map Series No. Grwy-1.
- Maike, C.A., 2017, Areas of Landslides Hague Quadrangle, ND Quadrangle: North Dakota Geological Survey 24K Map Series No. Hgue-1.
- Maike, C.A., 2017, Areas of Landslides Hague SE Quadrangle, ND Quadrangle: North Dakota Geological Survey 24K Map Series No. Hgue SE-1.



- Maike, C.A., 2017, Areas of Landslides Kulm Quadrangle, ND Quadrangle: North Dakota Geological Survey 24K Map Series No. Kulm – I.
- Maike, C.A., 2017, Areas of Landslides Kulm-Edgeley Dam Quadrangle, ND Quadrangle: North Dakota Geological Survey 24K Map Series No. KmEdD – I.
- Maike, C.A., 2017, Areas of Landslides May Lake SW Quadrangle, ND Quadrangle: North Dakota Geological Survey 24K Map Series No. MayL SW-1.
- Maike, C.A., 2017, Areas of Landslides Rennie Lake Quadrangle, ND Quadrangle: North Dakota Geological Survey 24K Map Series No. RnnL – I.
- Maike, C.A., 2017, Areas of Landslides Ventura Quadrangle, ND Quadrangle: North Dakota Geological Survey 24K Map Series No. Vntr-1.
- Maike, C.A., 2017, Areas of Landslides Weisser Dam West Quadrangle, ND Quadrangle: North Dakota Geological Survey 24K Map Series No. WssD W – I.
- Maike, C.A., 2017, Areas of Landslides Wimbledon Quadrangle, ND Quadrangle: North Dakota Geological Survey 24K Map Series No. Wmbd – I.
- Moxness, L.D., 2017, Areas of Landslides Battleview Quadrangle, ND Quadrangle: North Dakota Geological Survey 24K Map Series No. Btlw – I.
- Moxness, L.D., 2017, Areas of Landslides Fingal Quadrangle, ND Quadrangle: North Dakota Geological Survey 24K Map Series No. Fngl – I.
- Moxness, L.D., 2017, Areas of Landslides Fingal SW Quadrangle, ND Quadrangle: North Dakota Geological Survey 24K Map Series No. Fngl SW – I.
- Moxness, L.D., 2017, Areas of Landslides Hailstone Butte Quadrangle, ND Quadrangle: North Dakota Geological Survey 24K Map Series No. HstB – I.
- Moxness, L.D., 2017, Areas of Landslides Kathryn Quadrangle, ND Quadrangle: North Dakota Geological Survey 24K Map Series No. Kryn – I.
- Moxness, L.D., 2017, Areas of Landslides Lostwood Lakes Quadrangle, ND Quadrangle: North Dakota Geological Survey 24K Map Series No. Lstw – I.
- Moxness, L.D., 2017, Areas of Landslides Lucca Quadrangle, ND Quadrangle: North Dakota Geological Survey 24K Map Series No. Lcca – I.
- Moxness, L.D., 2017, Areas of Landslides Lunds Valley Quadrangle, ND Quadrangle: North Dakota Geological Survey 24K Map Series No. LndV – I.
- Moxness, L.D., 2017, Areas of Landslides Medicine Butte SE Quadrangle, ND Quadrangle: North Dakota Geological Survey 24K Map Series No. MdcB SE – I.
- Moxness, L.D., 2017, Areas of Landslides Nome Quadrangle, ND Quadrangle: North Dakota Geological Survey 24K Map Series No. Nome – I.
- Moxness, L.D., 2017, Areas of Landslides Powers Lake Quadrangle, ND Quadrangle: North Dakota Geological Survey 24K Map Series No. PwrL – I.
- Moxness, L.D., 2017, Areas of Landslides Sanborn SE Quadrangle, ND Quadrangle: North Dakota Geological Survey 24K Map Series No. Snbn – I.
- Moxness, L.D., 2017, Areas of Landslides Westby Lake Quadrangle, ND Quadrangle: North Dakota Geological Survey 24K Map Series No. WsbL – I.
- Murphy, E.C., 2017, Areas of Landslides Gorham SE Quadrangle, ND Quadrangle: North Dakota Geological Survey 24K Map Series No. Grhm SE – I.
- Murphy, E.C., 2017, Areas of Landslides Gorham SW Quadrangle, ND Quadrangle: North Dakota Geological Survey 24K Map Series No. Grhm SW – I.
- Murphy, E.C., 2017, Areas of Landslides Rattlesnack Butte Quadrangle, ND Quadrangle: North Dakota Geological Survey 24K Map Series No. RtsB – I.
- Murphy, E.C., 2017, Areas of Landslides Wannagan Creek East Quadrangle, ND Quadrangle: North Dakota Geological Survey 24K Map Series No. WngC E – I.

Outside Publications

- Boyd, C. A., Person, J. J., and Barnes, B., 2017, Additions to the Lancian mammalian fauna from southwest North Dakota: Journal of Vertebrate Paleontology. DOI: 10.1080/02724634.2017.1325368.

