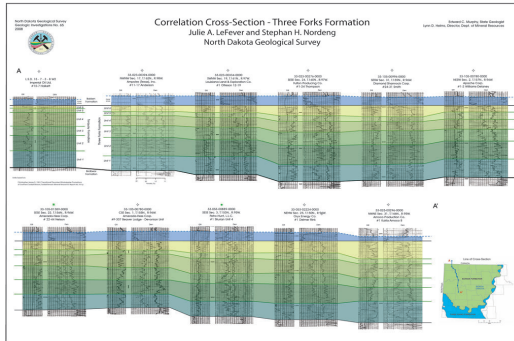


# NEW PUBLICATIONS



## Geologic Investigations

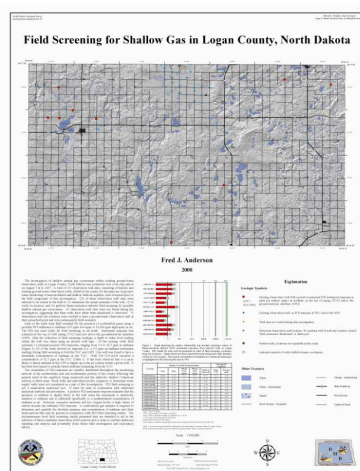
As the Geological Survey publishes maps, we are placing the pdfs (75 dpi) on our website for free download. A cd of the pdf(s) at 300 dpi is available for \$5. The shape files of those maps are available on cd for \$25. Paper copies of these maps range in price from \$10 -50.



LeFever, J.A., and Nordeng, S.H., 2008, Three Forks Formation – correlation cross section: North Dakota Geological Survey Geologic Investigation no. 65. Price: \$15.00 paper or \$5.00 for pdf on cd or \$25 for shape file on cd.

GI-65 Correlation Cross Section – Three Forks Formation by Lefever and Nordeng presents the stratigraphy of the Three Forks between the lower member of the Bakken Formation and the underlying Birdbear Formation. The Three Forks is subdivided into six informal units tied to a correlation published by Christofer (1961) for the #15-7 Halkett drilled in south-east Saskatchewan. The line runs from south-eastern Saskatchewan through Divide County North Dakota and ends in central Dunn County, North Dakota.

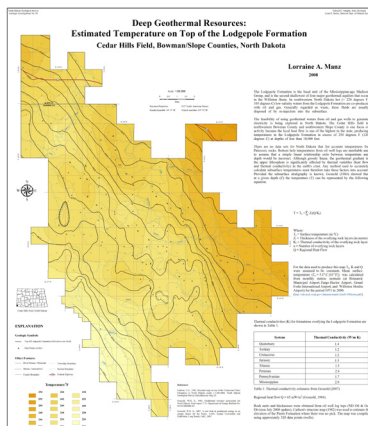
Anderson, F.J., 2008, Field screening for shallow gas in Sheridan County: North Dakota Geological Survey Geologic Investigation no. 66. Price: \$10.00 paper or \$5.00 for pdf on cd.



Anderson, F.J., 2008, Field screening for shallow gas in Logan County: North Dakota Geological Survey Geologic Investigation no. 67. Price: \$10.00 paper or \$5.00 for pdf on cd.

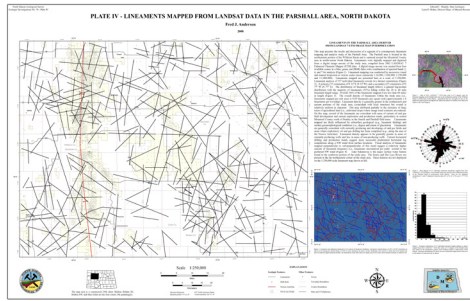
GI-67 Field Screening for Shallow Gas in Logan County, North Dakota is a 1:150,000 scale map that presents and briefly describes the results of recently completed shallow gas field screening of shallow ground-water observation wells in Logan County, North Dakota. The results of over 70 tested wells are displayed overlain onto a shaded-relief base map. A brief discussion, along with a graphical display of the results is included.

Anderson, F.J., 2008, Field screening for shallow gas in Benson County: North Dakota Geological Survey Geologic Investigation no. 68. Price: \$10.00 paper or \$5.00 for pdf on cd.



Manz, L.A., 2008, Deep geothermal resources: estimated temperature on top of the Lodgepole Formation Cedar Hills field, Bowman and Slope Counties, ND: North Dakota Geological Survey Geologic Investigation no. 69. Price: \$15.00 paper or \$5.00 for pdf on cd or \$25 for shape file on cd.

The feasibility of using geothermal waters from oil and gas wells to generate electricity is being explored in North Dakota. This 1:50,000-scale map depicts estimated temperatures on top of the Lodgepole Formation in the Cedar Hills oil field in northwestern Bowman County where hot, low-salinity waters exceed 220°F (105°C) at depths of less than 10,000 feet (300 meters).



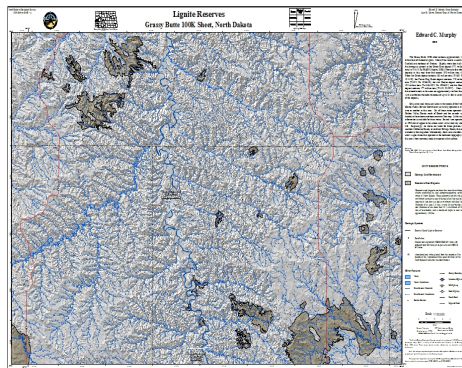
Anderson, F.J., 2008, Parshall study – lineament maps: North Dakota Geological Survey Geologic Investigation no. 70, a six map series. Price: \$15.00 paper or \$5.00 for pdf on cd or \$25 for shape file on cd.

GI-70 Lineament Mapping and Analysis in the Northeastern Williston Basin of North Dakota, presents the results of a recently completed contemporary lineament mapping and analysis investigation in the Parshall area of the northeastern Williston Basin in northwestern North Dakota. This publications consist of a series of five map poster plates and a brief summary report that describes the investigations data sources, methodology, and results that support ongoing NDGS petroleum geology related investigations. A comparative spatial analysis and discussion of the relationship between mapped lineaments and currently producing and non-producing oil and gas wells and fields in the Parshall area is included.

Anderson, F.J., 2008, Field Screening for shallow gas in North Dakota: North Dakota Geological Survey Geologic Investigation no. 71. Price: \$25.00 paper or \$5.00 for pdf on cd.

Anderson, F.J., 2008, Shallow gas exploration and production in North Dakota, powerpoint presented at the 2008 Rocky Mountain Unconventional Gas Conference in Rapid City, SD: North Dakota Geological Survey Geologic Investigation no. 72. Available online only from NDGS website.

Anderson, F.J., 2008, Locations of FID shallow gas occurrences in selected counties in North Dakota: North Dakota Geological Survey Geologic Investigation no. 73, 1:50,000 scale. Price: \$15.00 paper or \$5.00 for pdf on cd.



### 100K Mineral Maps

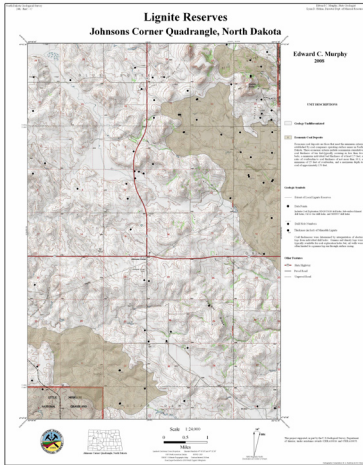
Murphy, Edward, C., 2008, Lignite Reserves: Grassy Butte 100k Sheet: North Dakota Geological Survey 100k GrBe-c, 1:100,000 scale. Price \$10 paper or \$25.00 cd.

The Grassy Butte 100K sheet contains approximately 1.4 billion tons of mineable lignite. Most of this reserve is south of Fairfield and northeast of Trotters. Slightly more than half of this tonnage is present in the Green River deposit (771 million tons) in T141N, R89&99. There are four other deposits in this map sheet that exceed 100 million tons. Most of the mineable coals in this area are approximately ten feet thick, with a combined mineable thickness of up to 21 feet in several of the deposits.

### 24K Mineral Maps

- Murphy, Edward, C., 2008, Lignite Reserves Baldwin, ND: NDGS 24k Series Bldw - c, 1:24,000 scale. Price \$5.00.
- Murphy, Edward, C., 2008, Lignite Reserves Banks, ND: NDGS 24k Series Bnks - c, 1:24,000 scale. Price \$5.00.
- Murphy, Edward, C., 2008, Lignite Reserves Belden SE, ND: NDGS 24k Series Bldn - c, 1:24,000 scale. Price \$5.00.
- Murphy, Edward, C., 2008, Lignite Reserves Benedict NW, ND: NDGS 24k Series Bndt NW - c, 1:24,000 scale. Price \$5.00.
- Murphy, Edward, C., 2008, Lignite Reserves Blacktail Lake, ND: NDGS 24k Series BlkL - c, 1:24,000 scale. Price \$5.00.
- Murphy, Edward, C., 2008, Lignite Reserves Blacktail Lake SE, ND: NDGS 24k Series BlkL SE - c, 1:24,000 scale. Price \$5.00.
- Murphy, Edward, C., 2008, Lignite Reserves Blackwater Lake, ND: NDGS 24k Series BkwL - c, 1:24,000 scale. Price \$5.00.
- Murphy, Edward, C., 2008, Lignite Reserves Blackwater Lake SE, ND: NDGS 24k Series BkwL SE - c, 1:24,000 scale. Price \$5.00.
- Murphy, Edward, C., 2008, Lignite Reserves Blackwater Lake SW, ND: NDGS 24k Series BkwL SW - c, 1:24,000 scale. Price \$5.00.
- Murphy, Edward, C., 2008, Lignite Reserves Blue Buttes, ND: NDGS 24k Series BluB - c, 1:24,000 scale. Price \$5.00.
- Murphy, Edward, C., 2008, Lignite Reserves Blue Buttes SE, ND: NDGS 24k Series BluB SE - c, 1:24,000 scale. Price \$5.00.
- Murphy, Edward, C., 2008, Lignite Reserves Bonetrail, ND: NDGS 24k Series Bntl - c, 1:24,000 scale. Price \$5.00.
- Murphy, Edward, C., 2008, Lignite Reserves Bonetrail SE, ND: NDGS 24k Series Bntl SE - c, 1:24,000 scale. Price \$5.00.
- Murphy, Edward, C., 2008, Lignite Reserves Bonetrail SW, ND: NDGS 24k Series Bntl SW - c, 1:24,000 scale. Price \$5.00.
- Murphy, Edward, C., 2008, Lignite Reserves Brush Mountain, ND: NDGS 24k Series BrsM - c, 1:24,000 scale. Price \$5.00.
- Murphy, Edward, C., 2008, Lignite Reserves Charlson, ND: NDGS 24k Series Chrl - c, 1:24,000 scale. Price \$5.00.
- Murphy, Edward, C., 2008, Lignite Reserves Charlson NE, ND: NDGS 24k Series Chrl NE - c, 1:24,000 scale. Price \$5.00.
- Murphy, Edward, C., 2008, Lignite Reserves Charlson NW, ND: NDGS 24k Series Chrl NW - c, 1:24,000 scale. Price \$5.00.
- Murphy, Edward, C., 2008, Lignite Reserves Charlson SW, ND: NDGS 24k Series Chrl SW - c, 1:24,000 scale. Price \$5.00.
- Murphy, Edward, C., 2008, Lignite Reserves Chris Creek, ND: NDGS 24k Series ChrC - c, 1:24,000 scale. Price \$5.00.
- Murphy, Edward, C., 2008, Lignite Reserves Cussicks Spring, ND: NDGS 24k Series CskS - c, 1:24,000 scale. Price \$5.00.
- Murphy, Edward, C., 2008, Lignite Reserves Dickinson North, ND: NDGS 24k Series Dksn N - c, 1:24,000 scale. Price \$5.00.
- Murphy, Edward, C., 2008, Lignite Reserves Dickinson South, ND: NDGS 24k Series Dksn S - c, 1:24,000 scale. Price \$5.00.
- Murphy, Edward, C., 2008, Lignite Reserves Douglas East, ND: NDGS 24k Series Dgls E - c, 1:24,000 scale. Price \$5.00.

Murphy, Edward, C., 2008, Lignite Reserves Douglas West, ND: NDGS 24k Series Dgls W - c, 1:24,000 scale. Price \$5.00.  
 Murphy, Edward, C., 2008, Lignite Reserves Emmet, ND: NDGS 24k Series Emmt - c, 1:24,000 scale. Price \$5.00.  
 Murphy, Edward, C., 2008, Lignite Reserves Emmet NE, ND: NDGS 24k Series Emmt NE - c, 1:24,000 scale. Price \$5.00.  
 Murphy, Edward, C., 2008, Lignite Reserves Emmet SE, ND: NDGS 24k Series Emmt SE - c, 1:24,000 scale. Price \$5.00.  
 Murphy, Edward, C., 2008, Lignite Reserves Emmet SW, ND: NDGS 24k Series Emmt SW - c, 1:24,000 scale. Price \$5.00.  
 Murphy, Edward, C., 2008, Lignite Reserves Epworth, ND: NDGS 24k Series Epwr - c, 1:24,000 scale. Price \$5.00.  
 Murphy, Edward, C., 2008, Lignite Reserves Epworth NW, ND: NDGS 24k Series Epwr NW - c, 1:24,000 scale. Price \$5.00.  
 Murphy, Edward, C., 2008, Lignite Reserves Gamache Creek, ND: NDGS 24k Series GmhC - c, 1:24,000 scale. Price \$5.00.  
 Murphy, Edward, C., 2008, Lignite Reserves Garrison, ND: NDGS 24k Series Grnn - c, 1:24,000 scale. Price \$5.00.  
 Murphy, Edward, C., 2008, Lignite Reserves Garrison NE, ND: NDGS 24k Series Grnn NE - c, 1:24,000 scale. Price \$5.00.  
 Murphy, Edward, C., 2008, Lignite Reserves Garrison Dam N, ND: NDGS 24k Series GrrD N - c, 1:24,000 scale. Price \$5.00.  
 Murphy, Edward, C., 2008, Lignite Reserves Grass Lake, ND: NDGS 24k Series GrsL - c, 1:24,000 scale. Price \$5.00.  
 Murphy, Edward, C., 2008, Lignite Reserves Johnson Corner, ND: NDGS 24k Series JhnC - c, 1:24,000 scale. Price \$5.00.



Murphy, Edward, C., 2008, Lignite Reserves Keene, ND: NDGS 24k Series Kene - c, 1:24,000 scale. Price \$5.00.  
 Murphy, Edward, C., 2008, Lignite Reserves Lake Jesse, ND: NDGS 24k Series LkJs - c, 1:24,000 scale. Price \$5.00.  
 Murphy, Edward, C., 2008, Lignite Reserves Lake Nettie, ND: NDGS 24k Series LkNt - c, 1:24,000 scale. Price \$5.00.  
 Murphy, Edward, C., 2008, Lignite Reserves Lost Bridge, ND: NDGS 24k Series LstB - c, 1:24,000 scale. Price \$5.00.  
 Murphy, Edward, C., 2008, Lignite Reserves Makoti SW, ND: NDGS 24k Series Mkoti - c, 1:24,000 scale. Price \$5.00.  
 Murphy, Edward, C., 2008, Lignite Reserves Mandaree SE, ND: NDGS 24k Series Mndr SE - c, 1:24,000 scale. Price \$5.00.  
 Murphy, Edward, C., 2008, Lignite Reserves Mandaree SW, ND: NDGS 24k Series Mndr SW - c, 1:24,000 scale. Price \$5.00.  
 Murphy, Edward, C., 2008, Lignite Reserves New Leipzig South, ND: NDGS 24k Series NwLp S - c, 1:24,000 scale. Price \$5.00.  
 Murphy, Edward, C., 2008, Lignite Reserves Otter Tail Creek, ND: NDGS 24k Series OtTC - c, 1:24,000 scale. Price \$5.00.

Murphy, Edward, C., 2008, Lignite Reserves Parshall NE, ND: NDGS 24k Series Prsh NE - c, 1:24,000 scale. Price \$5.00.  
 Murphy, Edward, C., 2008, Lignite Reserves Parshall SE, ND: NDGS 24k Series Prsh SE - c, 1:24,000 scale. Price \$5.00.  
 Murphy, Edward, C., 2008, Lignite Reserves Ray SE, ND: NDGS 24k Series Ray - c, 1:24,000 scale. Price \$5.00.  
 Murphy, Edward, C., 2008, Lignite Reserves Red Mike Hill, ND: NDGS 24k Series RdMH - c, 1:24,000 scale. Price \$5.00.  
 Murphy, Edward, C., 2008, Lignite Reserves Riverdale North, ND: NDGS 24k Series Rvdl N - c, 1:24,000 scale. Price \$5.00.  
 Murphy, Edward, C., 2008, Lignite Reserves Robinson Coulee, ND: NDGS 24k Series RbsC - c, 1:24,000 scale. Price \$5.00.  
 Murphy, Edward, C., 2008, Lignite Reserves Spring Brook, ND: NDGS 24k Series SprB - c, 1:24,000 scale. Price \$5.00.  
 Murphy, Edward, C., 2008, Lignite Reserves Stockyard Creek, ND: NDGS 24k Series StkC - c, 1:24,000 scale. Price \$5.00.  
 Murphy, Edward, C., 2008, Lignite Reserves Tioga SE, ND: NDGS 24k Series Tiog SE - c, 1:24,000 scale. Price \$5.00.  
 Murphy, Edward, C., 2008, Lignite Reserves Trenton, ND: NDGS 24k Series Trnt - c, 1:24,000 scale. Price \$5.00.  
 Murphy, Edward, C., 2008, Lignite Reserves Trenton NE, ND: NDGS 24k Series Trnt NE - c, 1:24,000 scale. Price \$5.00.  
 Murphy, Edward, C., 2008, Lignite Reserves Turtle Creek NW, ND: NDGS 24k Series TrtC NW - c, 1:24,000 scale. Price \$5.00.  
 Murphy, Edward, C., 2008, Lignite Reserves Underwood, ND: NDGS 24k Series Undw - c, 1:24,000 scale. Price \$5.00.  
 Murphy, Edward, C., 2008, Lignite Reserves Washburn, ND: NDGS 24k Series Wsbr - c, 1:24,000 scale. Price \$5.00.  
 Murphy, Edward, C., 2008, Lignite Reserves Washburn NE, ND: NDGS 24k Series Wsbr NE - c, 1:24,000 scale. Price \$5.00.  
 Murphy, Edward, C., 2008, Lignite Reserves Washburn SW, ND: NDGS 24k Series Wsbr SW - c, 1:24,000 scale. Price \$5.00.  
 Murphy, Edward, C., 2008, Lignite Reserves West Bonetrail, ND: NDGS 24k Series WsBt - c, 1:24,000 scale. Price \$5.00.  
 Murphy, Edward, C., 2008, Lignite Reserves Williston East, ND: NDGS 24k Series Wlst E - c, 1:24,000 scale. Price \$5.00.  
 Murphy, Edward, C., 2008, Lignite Reserves Williston SE, ND: NDGS 24k Series Wlst SE - c, 1:24,000 scale. Price \$5.00.  
 Murphy, Edward, C., 2008, Lignite Reserves Williston West, ND: NDGS 24k Series Wlst W - c, 1:24,000 scale. Price \$5.00.  
 Murphy, Edward, C., 2008, Lignite Reserves Wilton, ND: NDGS 24k Series Wltn - c, 1:24,000 scale. Price \$5.00.  
 Murphy, Edward, C., 2008, Lignite Reserves Wilton SE, ND: NDGS 24k Series Wltn SE - c, 1:24,000 scale. Price \$5.00.

### Outside Publications

Anderson, F.J., 2008, Abstract: Exploration and Production of Shallow Gas in North Dakota, 2008 Rocky Mountain Unconventional Gas Conference, Meeting Abstracts, p. 12.  
 Haire, S., Hanks, H., Hoganson, J. W., and Lyson, T., 2008, New material of *Plesiadapis* from the Late Paleocene Bullion Creek Formation of western North Dakota, abstract: Journal of Vertebrate Paleontology, v. 28, supplement to no. 3, p. 87A.  
 Shurr, G.W., Haggar, T., Fischer, D.W., and Anderson, F.J., 2008, Abstract: Portable Gas Detectors-Appropriate Technology for Shallow Gas Exploration, 2008 Rocky Mountain Unconventional Gas Conference, Meeting Abstracts, p. 17.