

NEW PUBLICATIONS



Geologic Investigations

As the Geological Survey publishes new maps, we are placing them as PDF files on our website for free download. Paper copies of these maps range in price from \$10 - \$50. The shapefiles of those maps are available on CD for \$25.



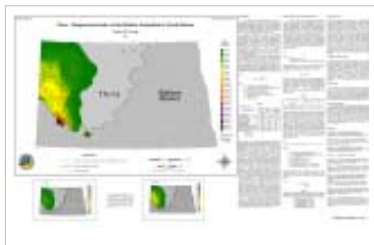
LeFever, J.A., 2008, Isopach of the Middle Bakken member: North Dakota Geological Survey Geologic Investigation no. 59. Price: \$10 per paper map sheet or \$25.00 CD.

GI 59 contains five map sheets at a scale of 1:1,000,000. The maps include isopachs of the Bakken Formation (sheet 1), the Upper member (sheet 2), the Middle member (sheet 3), and the Lower member (sheet 4). Additionally, map sheet 5 is a structure contour map on the top of the Bakken Formation. Each map sheet contains a reference geophysical log and explanatory text. Map sheet 5 also contains a map of the major structural features in North Dakota.



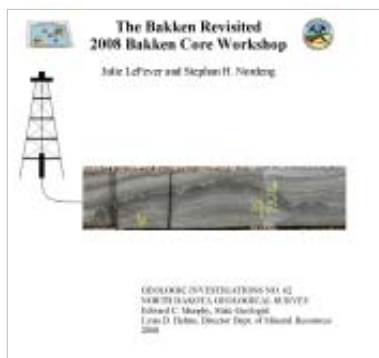
Anderson, F.J., 2008, Field Screening for Shallow Gas in Selected Wells in Burleigh County, North Dakota: North Dakota Geological Survey Geologic Investigation no. 60. Price: \$10.00 paper or \$5.00 CD.

This map depicts the results of supplementary shallow gas field screening conducted in Burleigh County in 2007. The 1:150,000-scale map presents the results of supplemental flame-ionization detector field screening analysis on selected ground-water observation wells in Burleigh County. Field screening results are overlain onto a shaded relief base map. A brief discussion, along with a graphical display of the results, is included.



Nordeng, S.H., 2008, Time-Temperature Index of the Bakken Formation in North Dakota: North Dakota Geological Survey Geologic Investigation no. 61. Price: \$10 paper or \$25.00 CD.

GI 61 is a map of the oil-generating potential of the Mississippian-Devonian-age Bakken Formation in North Dakota. The map is built from isopach maps that reconstruct the burial history of the Bakken. The burial history and a map of modern geothermal heat flows are used to calculate the Time-Temperature Index of Bakken using the Lopatin method. Text accompanying the map includes the methods and calculations that are used in defining areas containing potentially productive Bakken rocks.



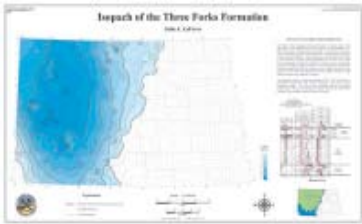
LeFever, J.A. and Nordeng, S.H., 2008, The Bakken Revisited Core Workshop, Williston Basin Petroleum Conference and Expo: North Dakota Geological Survey Geologic Investigation no. 62. Price: \$15 CD.

GI 62 The Bakken Revisited; 2008 Bakken Core Workshop by Julie A. LeFever and Stephan H. Nordeng was published for the 16th Williston Basin Petroleum Conference held on April 27-29, 2008 in Minot, North Dakota. The workshop volume contains a set of isopach maps for the Lower, Middle and Upper members of the Bakken Formation. The five lithofacies of the Middle Bakken are studied in detail through the presentation of an annotated reference wireline log and a series of core and thin-section photographs. The workshop examined 14 Bakken cores from various parts of the basin. The workshop volume includes, for each of these wells, annotated photographs of the core, wireline logs of the Bakken Formation and a Well Completion Report (Form 6). Additional data include core analyses and two cross-sections.



LeFever, J.A., 2008, Geochemical maps of the Bakken Formation :a six-part map series: North Dakota Geological Survey Geologic Investigation no. 63. Price: \$10 per paper map sheet or \$25.00 CD.

GI 63 is a six-part series of maps containing rock evaluation data for the Bakken Formation at a scale of 1:1,000,000. These maps include the hydrogen index for the Lower Bakken (sheet 1), the hydrogen index for the Upper Bakken (sheet 2), S2-Tmax of the Lower Bakken (sheet 3), S2-Tmax of the Upper Bakken (sheet 4), total organic carbon of the Lower Bakken (sheet 5), and total organic carbon of the Upper Bakken (sheet 6).



LeFever, J.A., 2008, Isopach of the Three Forks Formation: North Dakota Geological Survey Geologic Investigation no. 64. Price: \$10 per paper map sheet or \$25.00 CD.

GI 64 is a thickness map of the Three Forks Formation in North Dakota at the scale of 1:1,000,000. A reference geophysical log is included in the poster along with a small index map showing the extent of the Bakken Formation and the underlying Three Forks Formation.

100K Mineral Maps

Murphy, Edward, C., 2008, Lignite Reserves: Drake 100k Sheet: North Dakota Geological Survey 100k Drke-c, 1:100,000 scale. Price: \$5 paper or \$25.00 CD.

Murphy, Edward, C., 2008, Lignite Reserves: Mc Clusky 100k Sheet: North Dakota Geological Survey 100k McCM-c, 1:100,000 scale. Price: \$5 paper or \$25.00 CD.



Murphy, Edward, C., 2008, Lignite Reserves: Stanley 100k Sheet: North Dakota Geological Survey 100k Stnl-c, 1:100,000 scale. Price: \$10 paper or \$25 CD.

The Stanley 100k sheet depicts 241 million tons of economically mineable lignite in six deposits. Two of the deposits contain 60 million tons of mineable coal, the largest deposits in this map sheet. The thickest mineable coal is 17.5 feet (two beds) in the Charlson deposit and 16 feet (one to two beds) in the Beaver Creek deposit.

24K Geology Maps



Anderson, F.J., 2008, Surface geology map of the West Fargo South Quadrangle, North Dakota: North Dakota Geological Survey 24k Wfrg S - sg, 1:24,000 scale. Price: \$5.00.

The surface and near-surface geology of the West Fargo South Quadrangle has recently been mapped at the detailed scale of 1:24,000. Relationships of Sheyenne River alluvial sediments and Pleistocene glaciolacustrine sediments are depicted on this map. Problematic areas associated with the occurrence of glaciofluvial compaction ridge sediments have been delineated based on a contemporary interpretation of historical and recently completed near-surface drilling investigations.

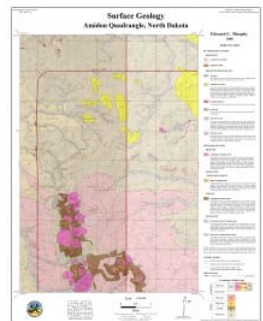
- Bluemle, J.P., 2008, Surface geology map of the Cooperstown East Quadrangle, ND: NDGS 24k Cprn E - sg, 1:24,000 scale. Price: \$5.00.
- Bluemle, J.P., 2008, Surface geology map of the Bordulac Quadrangle, ND: NDGS 24k Brdc- sg, 1:24,000 scale. Price: \$5.00.
- Bluemle, J.P., 2008, Surface geology map of the Binford Quadrangle, ND: NDGS 24k Bnfd - sg, 1:24,000 scale. Price: \$5.00.
- Bluemle, J.P., 2008, Surface geology map of the Brantford Quadrangle, ND: NDGS 24k Brnt - sg, 1:24,000 scale. Price: \$5.00.
- Bluemle, J.P., 2008, Surface geology map of the Brantford Northeast Quadrangle, ND: NDGS 24k Brnt NE - sg, 1:24,000 scale. Price: \$5.00.
- Bluemle, J.P., 2008, Surface geology map of the Brantford Northwest Quadrangle, ND: NDGS 24k Brnt NW- sg, 1:24,000 scale. Price: \$5.00.
- Bluemle, J.P., 2008, Surface geology map of the Dover Quadrangle, ND: NDGS 24k Dovr - sg, 1:24,000 scale. Price: \$5.00.
- Bluemle, J.P., 2008, Surface geology map of the Sykeston Quadrangle, ND: NDGS 24k Syks - sg, 1:24,000 scale. Price: \$5.00.
- Bluemle, J.P., 2008, Surface geology map of the New Rockford SE Quadrangle, ND: NDGS 24k NwRf SE - sg, 1:24,000 scale. Price: \$5.00.
- Bluemle, J.P., 2008, Surface geology map of the Cathay Southeast Quadrangle, ND: NDGS 24k Cthy SE - sg, 1:24,000 scale. Price: \$5.00.
- Bluemle, J.P., 2008, Surface geology map of the Cathay Quadrangle, ND: NDGS 24k Cthy - sg, 1:24,000 scale. Price: \$5.00.
- Bluemle, J.P., 2008, Surface geology map of the Flora Southeast Quadrangle, ND: NDGS 24k Flra SE - sg, 1:24,000 scale. Price: \$5.00.
- Bluemle, J.P., 2008, Surface geology map of the Pelican Lake Quadrangle, ND: NDGS 24k PcnL - sg, 1:24,000 scale. Price: \$5.00.
- Bluemle, J.P., 2008, Surface geology map of the Peterson Lake Quadrangle, ND: NDGS 24k PtrL - sg, 1:24,000 scale. Price: \$5.00.

Bluemle, J.P., 2008, Surface geology map of the Turtle Lake Quadrangle, ND: NDGS 24k TrtL - sg, 1:24,000 scale. Price: \$5.00.
 Bluemle, J.P., 2008, Surface geology map of the Lake Nettie Quadrangle, ND: NDGS 24k LkNt - sg, 1:24,000 scale. Price: \$5.00.



Manz, L., 2008, Surface geology of the Valley City West Quadrangle, North Dakota: North Dakota Geological Survey 24k VlyC W - sg, 1:24,000 scale. Price \$5.00.

This map is the first of a pair that depict the surface geology of the Valley City area in southeastern North Dakota. The second, Valley City East, will be completed in 2009. Surface geology is superimposed on a topographic background. Price: \$5.00

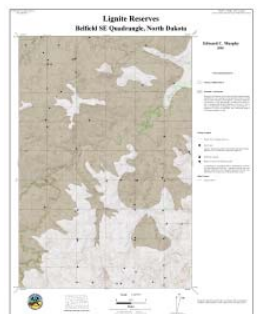


Murphy, E.C., 2008, Surface geology of the Amidon Quadrangle, North Dakota: North Dakota Geological Survey 24k Amdn - sg, 1:24,000 scale. Price: \$5.00.

The dominant features in the Amidon Quadrangle are the Chalky Buttes and White Butte. At 3,506 feet, White Butte is the highest point in North Dakota. The Chalky Buttes are prone to slope failure and there are a number of landslides along the slopes of these buttes. There are also significant deposits of pediment gravels that extend a mile or so to the west and two to three miles to the east of the buttes. These pediment gravels can be difficult to differentiate from the Chadron gravels from which they are partially derived. The pediment gravels have been found to contain erionite, a fibrous zeolite.

24K Mineral Maps

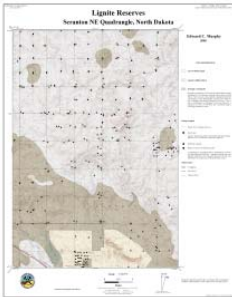
Murphy, Edward C., 2008, Lignite Reserves Alkabo, ND: NDGS 24k Series Alko - c 1:24,000 scale. Price: \$5.00.
 Murphy, Edward C., 2008, Lignite Reserves Amidon, ND: NDGS 24k Series Amdn - c 1:24,000 scale. Price: \$5.00.
 Murphy, Edward C., 2008, Lignite Reserves Amidon SE, ND: NDGS 24k Series Amdn-SE - c 1:24,000 scale. Price: \$5.00.
 Murphy, Edward C., 2008, Lignite Reserves Atcoal, ND: NDGS 24k Series Atcl - c 1:24,000 scale. Price: \$5.00.
 Murphy, Edward C., 2008, Lignite Reserves Beaver Lake, ND: NDGS 24k Series Bvrl - c 1:24,000 scale. Price: \$5.00.
 Murphy, Edward C., 2008, Lignite Reserves Belfield, ND: NDGS 24k Series Blfd - c 1:24,000 scale. Price: \$5.00.



Murphy, Edward C., 2008, Lignite Reserves Belfield NE, ND: NDGS 24k Series Blfd NE - c 1:24,000 scale. Price: \$5.00.
 Murphy, Edward C., 2008, Lignite Reserves Belfield SE, ND: NDGS 24k Series Blfd SE - c 1:24,000 scale. Price: \$5.00.
 Murphy, Edward C., 2008, Lignite Reserves Belfield SW, ND: NDGS 24k Series Blfd SW - c 1:24,000 scale. Price: \$5.00.
 Murphy, Edward C., 2008, Lignite Reserves Black Butte, ND: NDGS 24k Series BlkB - c 1:24,000 scale. Price: \$5.00.
 Murphy, Edward C., 2008, Lignite Reserves Bowbells NW, ND: NDGS 24k Series Bbls - c 1:24,000 scale. Price: \$5.00.
 Murphy, Edward C., 2008, Lignite Reserves Bowman, ND: NDGS 24k Series Bwmn - c 1:24,000 scale. Price: \$5.00.
 Murphy, Edward C., 2008, Lignite Reserves Bowman SW, ND: NDGS 24k Series Bwmn SW - c 1:24,000 scale. Price: \$5.00.

Murphy, Edward C., 2008, Lignite Reserves Boyce Creek East, ND: NDGS 24k Series BycC E - c 1:24,000 scale. Price: \$5.00.
 Murphy, Edward C., 2008, Lignite Reserves Boyce Creek West, ND: NDGS 24k Series BycC W - c 1:24,000 scale. Price: \$5.00.
 Murphy, Edward C., 2008, Lignite Reserves Buffalo Gap Campground, ND: NDGS 24k Series BfGC - c 1:24,000 scale. Price: \$5.00.
 Murphy, Edward C., 2008, Lignite Reserves Bullion Butte, ND: NDGS 24k Series BlnB - c 1:24,000 scale. Price: \$5.00.
 Murphy, Edward C., 2008, Lignite Reserves Camp Lake, ND: NDGS 24k Series CmpL - c 1:24,000 scale. Price: \$5.00.
 Murphy, Edward C., 2008, Lignite Reserves Chimney Butte, ND: NDGS 24k Series ChmB - c 1:24,000 scale. Price: \$5.00.
 Murphy, Edward C., 2008, Lignite Reserves Clark Butte SW, ND: NDGS 24k Series ClkB SW - c 1:24,000 scale. Price: \$5.00.
 Murphy, Edward C., 2008, Lignite Reserves Cliffs Plateau, ND: NDGS 24k Series ClfP - c 1:24,000 scale. Price: \$5.00.
 Murphy, Edward C., 2008, Lignite Reserves Columbus, ND: NDGS 24k Series Clmb - c 1:24,000 scale. Price: \$5.00.
 Murphy, Edward C., 2008, Lignite Reserves Columbus SW, ND: NDGS 24k Series Clmb SW - c 1:24,000 scale. Price: \$5.00.
 Murphy, Edward C., 2008, Lignite Reserves Coteau, ND: NDGS 24k Series Ctau - c 1:24,000 scale. Price: \$5.00.
 Murphy, Edward C., 2008, Lignite Reserves Daglum NW, ND: NDGS 24k Series Dglm NW - c 1:24,000 scale. Price: \$5.00.
 Murphy, Edward C., 2008, Lignite Reserves Daglum SW, ND: NDGS 24k Series Dglm SW - c 1:24,000 scale. Price: \$5.00.
 Murphy, Edward C., 2008, Lignite Reserves Davis Buttes, ND: NDGS 24k Series DvsB - c 1:24,000 scale. Price: \$5.00.
 Murphy, Edward C., 2008, Lignite Reserves Deep Creek North, ND: NDGS 24k Series DepC N - c 1:24,000 scale. Price: \$5.00.
 Murphy, Edward C., 2008, Lignite Reserves Deep Creek South, ND: NDGS 24k Series DepC S - c 1:24,000 scale. Price: \$5.00.
 Murphy, Edward C., 2008, Lignite Reserves Dominek Lake, ND: NDGS 24k Series DmnL - c 1:24,000 scale. Price: \$5.00.
 Murphy, Edward C., 2008, Lignite Reserves Fryburg, ND: NDGS 24k Series Frbg - c 1:24,000 scale. Price: \$5.00.
 Murphy, Edward C., 2008, Lignite Reserves Fryburg NE, ND: NDGS 24k Series Frbg NE - c 1:24,000 scale. Price: \$5.00.
 Murphy, Edward C., 2008, Lignite Reserves Fryburg NW, ND: NDGS 24k Series Frbg NW - c 1:24,000 scale. Price: \$5.00.
 Murphy, Edward C., 2008, Lignite Reserves Gascoyne, ND: NDGS 24k Series Gsyn - c 1:24,000 scale. Price: \$5.00.

- Murphy, Edward C., 2008, Lignite Reserves Golva, ND: NDGS 24k Series Glva - c 1:24,000 scale. Price: \$5.00.
- Murphy, Edward C., 2008, Lignite Reserves Grenora, ND: NDGS 24k Series Grnr - c 1:24,000 scale. Price: \$5.00.
- Murphy, Edward C., 2008, Lignite Reserves Griffin, ND: NDGS 24k Series Grfn - c 1:24,000 scale. Price: \$5.00.
- Murphy, Edward C., 2008, Lignite Reserves Hanks, ND: NDGS 24k Series Hnks - c 1:24,000 scale. Price: \$5.00.
- Murphy, Edward C., 2008, Lignite Reserves Hebron SE, ND: NDGS 24k Series Hbrn SE - c 1:24,000 scale. Price: \$5.00.
- Murphy, Edward C., 2008, Lignite Reserves Ives, ND: NDGS 24k Series Ivs - c 1:24,000 scale. Price: \$5.00.
- Murphy, Edward C., 2008, Lignite Reserves Juniper Spur, ND: NDGS 24k Series JnSr - c 1:24,000 scale. Price: \$5.00.
- Murphy, Edward C., 2008, Lignite Reserves Lefor NW, ND: NDGS 24k Series Lfor - c 1:24,000 scale. Price: \$5.00.
- Murphy, Edward C., 2008, Lignite Reserves Lefor SW, ND: NDGS 24k Series Lfor SW - c 1:24,000 scale. Price: \$5.00.
- Murphy, Edward C., 2008, Lignite Reserves Lehigh, ND: NDGS 24k Series Lhgh - c 1:24,000 scale. Price: \$5.00.
- Murphy, Edward C., 2008, Lignite Reserves Marmarth SE, ND: NDGS 24k Series Mmr - c 1:24,000 scale. Price: \$5.00.
- Murphy, Edward C., 2008, Lignite Reserves Medora, ND: NDGS 24k Series Mdra - c 1:24,000 scale. Price: \$5.00.
- Murphy, Edward C., 2008, Lignite Reserves Mineral Springs, ND: NDGS 24k Series MnlS - c 1:24,000 scale. Price: \$5.00.
- Murphy, Edward C., 2008, Lignite Reserves New England, ND: NDGS 24k Series NwEn - c 1:24,000 scale. Price: \$5.00.
- Murphy, Edward C., 2008, Lignite Reserves New England SW, ND: NDGS 24k Series NwEn SW - c 1:24,000 scale. Price: \$5.00.
- Murphy, Edward C., 2008, Lignite Reserves New Hradec North, ND: NDGS 24k Series NwHr N - c 1:24,000 scale. Price: \$5.00.
- Murphy, Edward C., 2008, Lignite Reserves New Hradec South, ND: NDGS 24k Series NwHr S - c 1:24,000 scale. Price: \$5.00.
- Murphy, Edward C., 2008, Lignite Reserves Noonan, ND: NDGS 24k Series Nnan - c 1:24,000 scale. Price: \$5.00.
- Murphy, Edward C., 2008, Lignite Reserves Noonan SE, ND: NDGS 24k Series Nnan SE - c 1:24,000 scale. Price: \$5.00.
- Murphy, Edward C., 2008, Lignite Reserves Northgate, ND: NDGS 24k Series Nrgt - c 1:24,000 scale. Price: \$5.00.
- Murphy, Edward C., 2008, Lignite Reserves Pretty Butte, ND: NDGS 24k Series PrtB - c 1:24,000 scale. Price: \$5.00.
- Murphy, Edward C., 2008, Lignite Reserves Rennie Lake, ND: NDGS 24k Series RnnL - c 1:24,000 scale. Price: \$5.00.
- Murphy, Edward C., 2008, Lignite Reserves Rhame, ND: NDGS 24k Series Rhme - c 1:24,000 scale. Price: \$5.00.
- Murphy, Edward C., 2008, Lignite Reserves Rhame SE, ND: NDGS 24k Series Rhme SE - c 1:24,000 scale. Price: \$5.00.
- Murphy, Edward C., 2008, Lignite Reserves Rocky Ridge North, ND: NDGS 24k Series RkyR N - c 1:24,000 scale. Price: \$5.00.
- Murphy, Edward C., 2008, Lignite Reserves Rocky Ridge South, ND: NDGS 24k Series RkyR S - c 1:24,000 scale. Price: \$5.00.
- Murphy, Edward C., 2008, Lignite Reserves Scranton NE, ND: NDGS 24k Series Scrn - c 1:24,000 scale. Price: \$5.00.
- Murphy, Edward C., 2008, Lignite Reserves Scranton SW, ND: NDGS 24k Series Scrn SW - c 1:24,000 scale. Price: \$5.00.
- Murphy, Edward C., 2008, Lignite Reserves Sentinel Butte, ND: NDGS 24k Series SntB - c 1:24,000 scale. Price: \$5.00.
- Murphy, Edward C., 2008, Lignite Reserves Sentinel Butte SE, ND: NDGS 24k Series SntB SE - c 1:24,000 scale. Price: \$5.00.
- Murphy, Edward C., 2008, Lignite Reserves Skjermo Lake, ND: NDGS 24k Series SkjL - c 1:24,000 scale. Price: \$5.00.
- Murphy, Edward C., 2008, Lignite Reserves South Heart, ND: NDGS 24k Series SthH - c 1:24,000 scale. Price: \$5.00.
- Murphy, Edward C., 2008, Lignite Reserves Spring Creek, ND: NDGS 24k Series SprC - c 1:24,000 scale. Price: \$5.00.
- Murphy, Edward C., 2008, Lignite Reserves Square Butte, ND: NDGS 24k Series SqrB - c 1:24,000 scale. Price: \$5.00.
- Murphy, Edward C., 2008, Lignite Reserves Stewart Lake, ND: NDGS 24k Series StwL - c 1:24,000 scale. Price: \$5.00.
- Murphy, Edward C., 2008, Lignite Reserves Stony Butte, ND: NDGS 24k Series StnB - c 1:24,000 scale. Price: \$5.00.
- Murphy, Edward C., 2008, Lignite Reserves Talbot Butte, ND: NDGS 24k Series TbtB - c 1:24,000 scale. Price: \$5.00.
- Murphy, Edward C., 2008, Lignite Reserves Three V Crossing, ND: NDGS 24k Series TrVC - c 1:24,000 scale. Price: \$5.00.
- Murphy, Edward C., 2008, Lignite Reserves Tracy Mountain, ND: NDGS 24k Series TrcM - c 1:24,000 scale. Price: \$5.00.
- Murphy, Edward C., 2008, Lignite Reserves Vanville NE, ND: NDGS 24k Series Vnvl NE - c 1:24,000 scale. Price: \$5.00.
- Murphy, Edward C., 2008, Lignite Reserves Warnke Hill, ND: NDGS 24k Series WrnH - c 1:24,000 scale. Price: \$5.00.
- Murphy, Edward C., 2008, Lignite Reserves Westby North, ND: NDGS 24k Series Wsby N - c 1:24,000 scale. Price: \$5.00.
- Murphy, Edward C., 2008, Lignite Reserves Westby South, ND: NDGS 24k Series Wsby S - c 1:24,000 scale. Price: \$5.00.
- Murphy, Edward C., 2008, Lignite Reserves White Lake, ND: NDGS 24k Series WhtL - c 1:24,000 scale. Price: \$5.00.
- Murphy, Edward C., 2008, Lignite Reserves Williams Lake, ND: NDGS 24k Series WlmL - c 1:24,000 scale. Price: \$5.00.
- Murphy, Edward C., 2008, Lignite Reserves Writing Rock North, ND: NDGS 24k Series WtgR N - c 1:24,000 scale. Price: \$5.00.
- Murphy, Edward C., 2008, Lignite Reserves Zahl, ND: NDGS 24k Series Zahl - c 1:24,000 scale. Price: \$5.00.



Department of Mineral Resources Assessments

Bohrer, M., Fried, S, Helms, L., Hicks, B., Juenker, B., McCusker, D., Anderson, F, LeFever, J., Murphy, E., and Nordeng, S., 2008, Bakken Formation Resource Study Project: North Dakota Department of Mineral Resources Report, 23 p. Price: \$50 CD.

Outside Publications

- Anderson, F.J., 2008, North Dakota Shallow Gas Study [abs.]: Williston Basin Petroleum Conference and Expo Proceedings, p. 14.
- Nordeng, S.H. and LeFever, J.A., 2008, Bakken Oil : A Question of Maturity [abs]: Williston Basin Petroleum Conference and Expo Proceedings, p. 21.
- Hoganson, J.W., 2008, Dinosaurs, sharks, and woolly mammoths : Glimpses of life in North Dakota's prehistoric past, in K. Davidson, B.T. Johnson, and N.D. Howe, eds., North Dakota History, Readings about the northern plain states: North Dakota Center for Distance Education, Fargo, ND, pp 4-40.

NDGS publications and USGS topographic maps are available:

- At our sales office 1016 East Calgary Avenue – Bismarck
- By telephone (701) 328-8000
- By fax (701) 328-8010
- By e-mail ndgsmaps@nd.gov
- By mail Publications Clerk, North Dakota Geological Survey
600 East Boulevard Avenue - Dept 405, Bismarck, ND 58505-0840

All orders must be prepaid. Cash, money order or check (in U.S. funds) will be accepted. Checks should be made payable to the North Dakota Geological Survey. Reasonable requests for items, for which no price is quoted, are sent free of charge. A free copy of the *NDGS List of Publications* will be sent upon request.



Order Form

Name: _____ Telephone: _____

Company: _____

Mailing Address: _____

City: _____ State: _____ Zip: _____

Quantity	Series and Number Map and Scale	Title	Price	Total
			\$	\$
			\$	\$
			\$	\$
			\$	\$
			\$	\$
Mail To: Publications Clerk NDGS Publications 600 East Boulevard Avenue Dept 405 Bismarck, ND 58505-0840			Subtotal	\$
			Shipping	\$
			TOTAL	\$