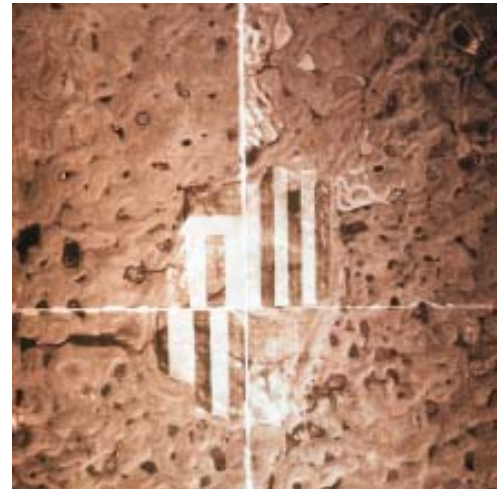




FIRST ANNOUNCEMENT
52nd Midwestern Friends of the Pleistocene
Field Conference
Bismarck, North Dakota
June 3rd & 4th, 2006



Quaternary terrace along the Missouri River north of Bismarck.



Ice-walled-lake plain near Stanley.

The 52nd Midwestern Friends of the Pleistocene Field Conference, co-sponsored by the North Dakota Geological Survey and North Dakota Geological Society, is to be held in Bismarck and New Town, North Dakota on June 3rd and 4th, 2006. The themes for this field conference will be the geological observations of Lewis and Clark along the Missouri River, the glacial stratigraphy of ice-walled-lake plains, and the structural interpretation of glaciotectonic ice-thrust features in north-central North Dakota.

Registration and an ice breaker will be held Friday evening, June 2nd at the North Dakota Heritage Center.

Cost: \$110.00 (The trip is limited to 90 registrants).

Day One:

Will follow the Missouri River from Bismarck to New Town and discuss Lewis & Clark's scientific observations with stops at:

- *The Double Ditch Historic Site*
- *Knife River Indian Village*
- *Knife River Flint Quarries*

*Banquet and lodging at the Four Bears Lodge & Casino in New Town
Traditional Mandan/Hidatsa meal of buffalo*

Day Two:

- *Ice-walled-lake plains*
- *Hogback Ridge*
- *Ice thrust site at Anamoose*

Return to Bismarck in the late afternoon to early evening

Mark these dates on your calendar!
See <http://www.state.nd.us/ndgs/FOP/Pleistocene.pdf> for registration information.