



Plate I

Timothy O. Nesheim

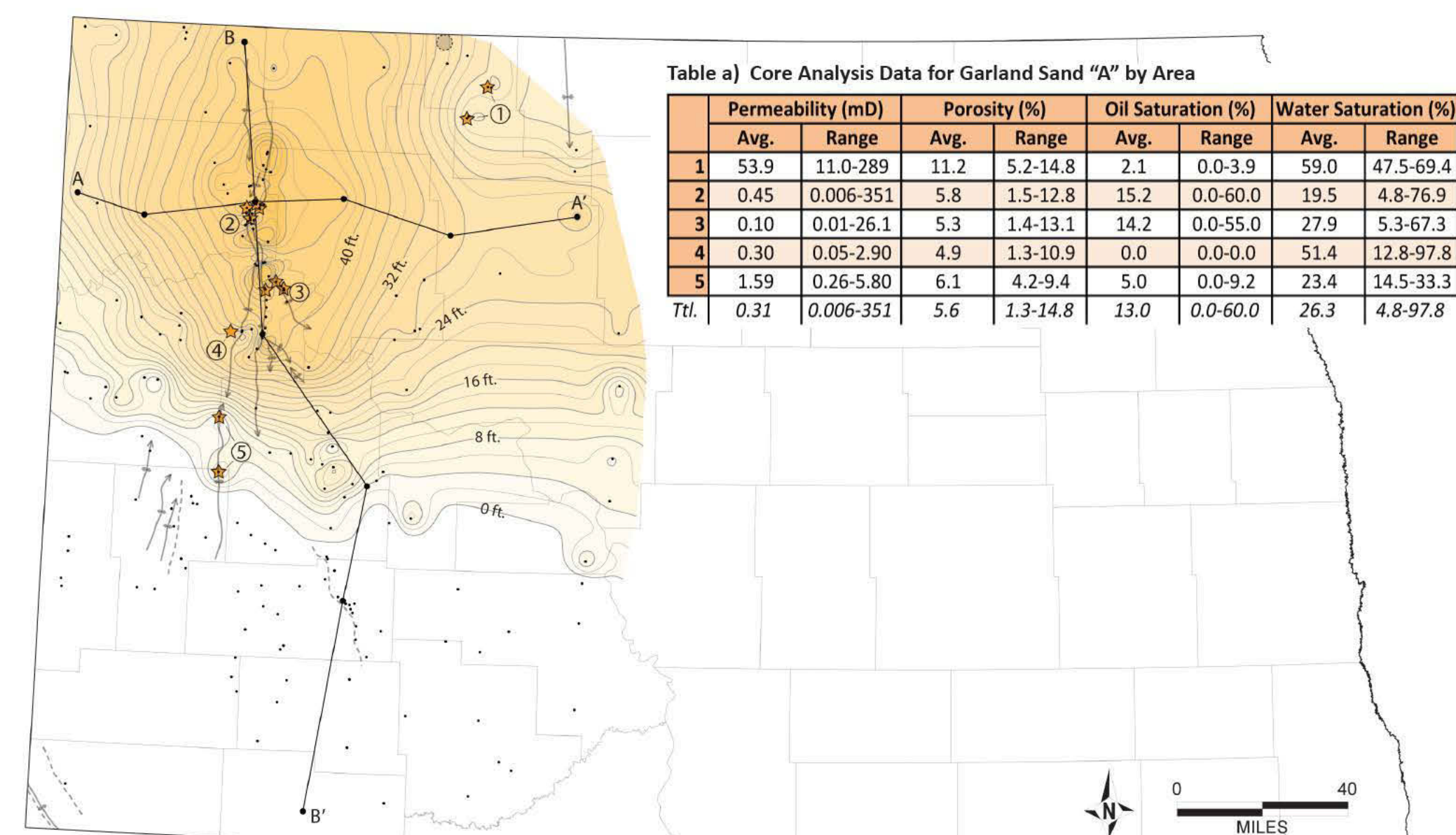
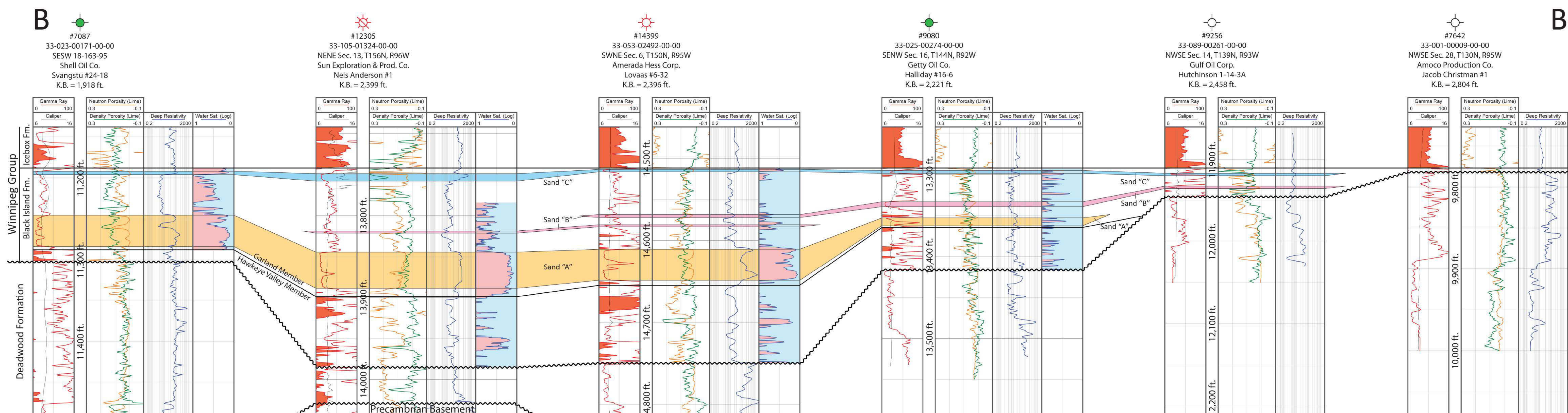
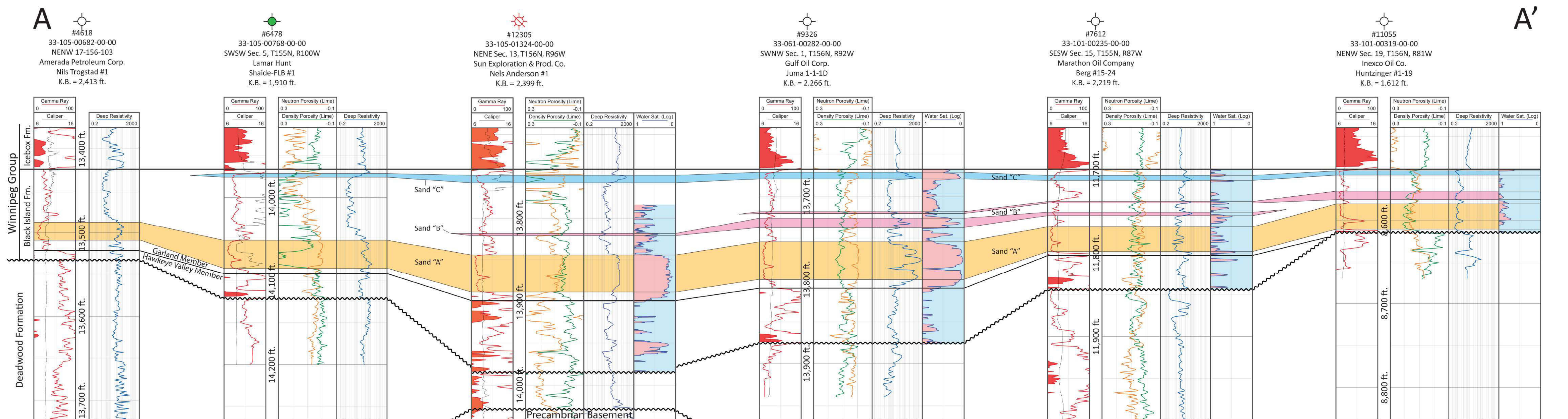


Table a) Core Analysis Data for Garland Sand "A" by Area

| | Permeability (mD) | | Porosity (%) | | Oil Saturation (%) | | Water Saturation (%) | |
|------|-------------------|-----------|--------------|----------|--------------------|----------|----------------------|-----------|
| | Avg. | Range | Avg. | Range | Avg. | Range | Avg. | Range |
| 1 | 53.9 | 11.0-289 | 11.2 | 5.2-14.8 | 2.1 | 0.0-3.9 | 59.0 | 47.5-69.4 |
| 2 | 0.45 | 0.006-351 | 5.8 | 1.5-12.8 | 15.2 | 0.0-60.0 | 19.5 | 4.8-76.9 |
| 3 | 0.10 | 0.01-26.1 | 5.3 | 1.4-13.1 | 14.2 | 0.0-55.0 | 27.9 | 5.3-67.3 |
| 4 | 0.30 | 0.05-2.90 | 4.9 | 1.3-10.9 | 0.0 | 0.0-0.0 | 51.4 | 12.8-97.8 |
| 5 | 1.59 | 0.26-5.80 | 6.1 | 4.2-9.4 | 5.0 | 0.0-9.2 | 23.4 | 14.5-33.3 |
| Ttl. | 0.31 | 0.006-351 | 5.6 | 1.3-14.8 | 13.0 | 0.0-60.0 | 26.3 | 4.8-97.8 |

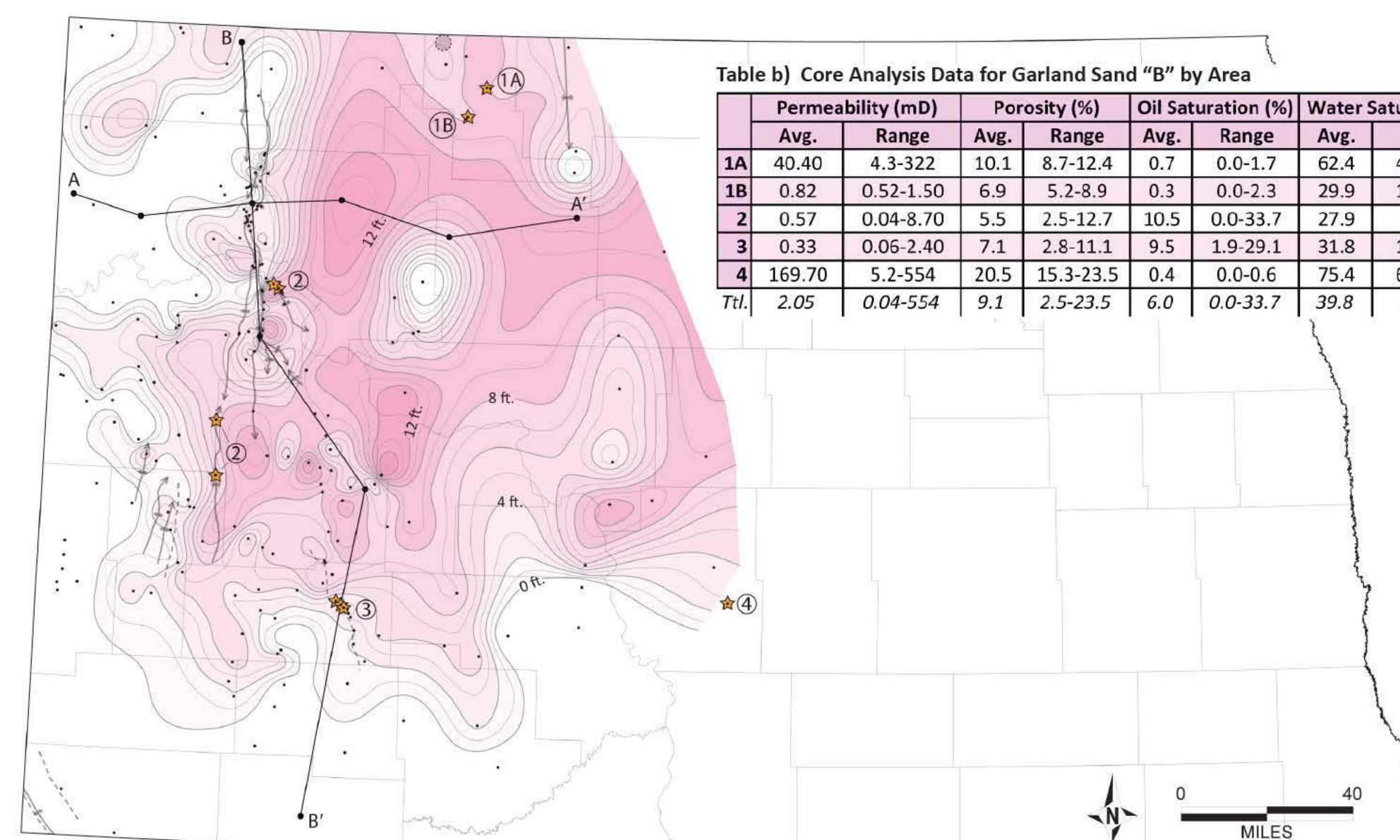


Table b) Core Analysis Data for Garland Sand "B" by Area

| | Permeability (mD) | | Porosity (%) | | Oil Saturation (%) | | Water Saturation (%) | |
|------|-------------------|-----------|--------------|-----------|--------------------|----------|----------------------|-----------|
| | Avg. | Range | Avg. | Range | Avg. | Range | Avg. | Range |
| 1A | 40.40 | 4.3-322 | 10.1 | 8.7-12.4 | 0.7 | 0.0-1.7 | 62.4 | 46.1-72.9 |
| 1B | 0.82 | 0.52-1.50 | 6.9 | 5.2-8.9 | 0.3 | 0.0-2.3 | 29.9 | 19.3-41.1 |
| 2 | 0.57 | 0.04-8.70 | 5.5 | 2.5-12.7 | 10.5 | 0.0-33.7 | 27.9 | 7.6-50.2 |
| 3 | 0.33 | 0.06-2.40 | 7.1 | 2.8-11.1 | 9.5 | 1.9-29.1 | 31.8 | 11.1-46.5 |
| 4 | 169.70 | 5.2-554 | 20.5 | 15.3-23.5 | 0.4 | 0.0-0.6 | 75.4 | 66.9-79.5 |
| Ttl. | 2.05 | 0.04-554 | 9.1 | 2.5-23.5 | 6.0 | 0.0-33.7 | 39.8 | 7.6-79.5 |

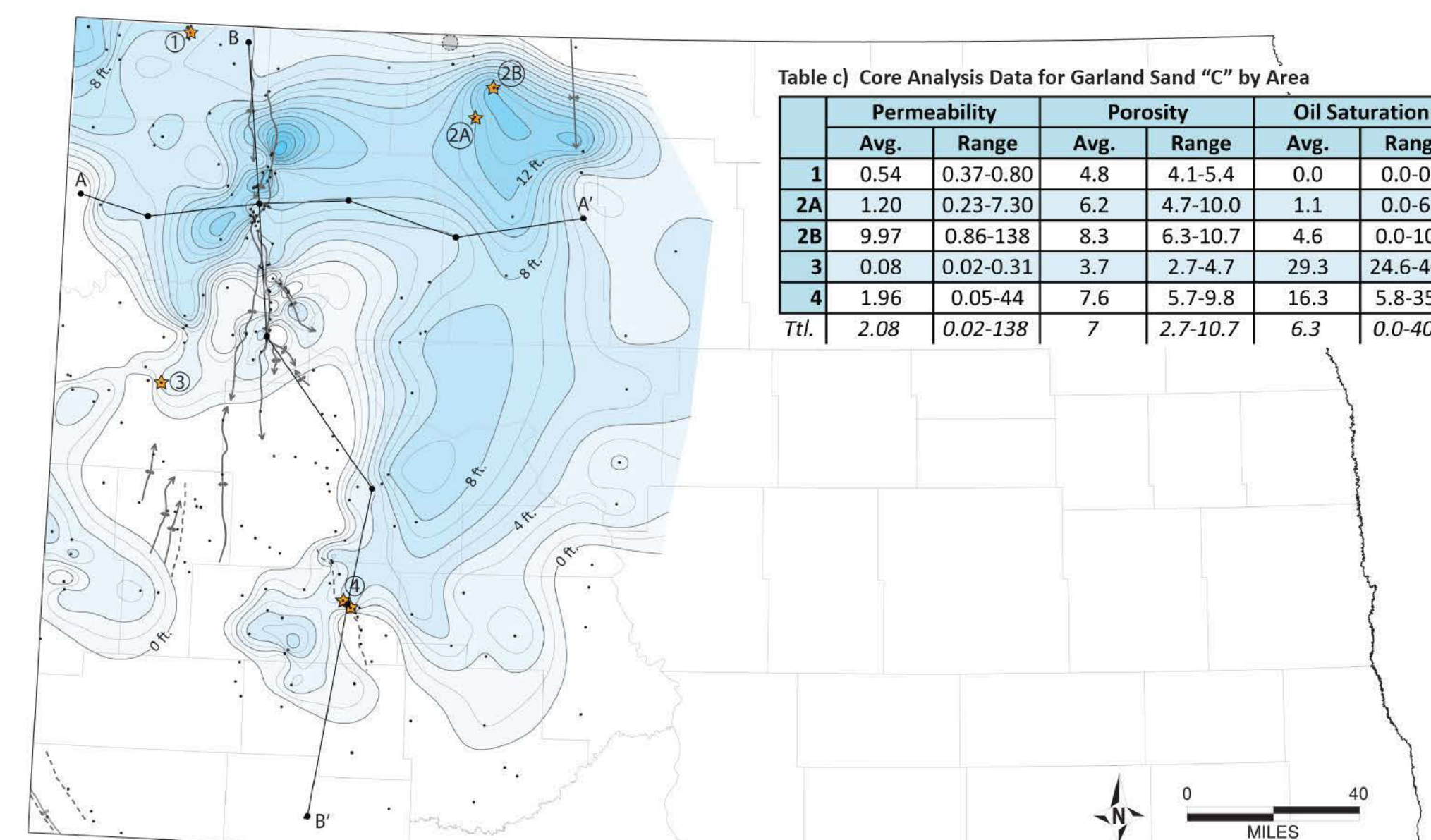


Table c) Core Analysis Data for Garland Sand "C" by Area

| | Permeability | | Porosity | | Oil Saturation | |
|------|--------------|-----------|----------|----------|----------------|-----------|
| | Avg. | Range | Avg. | Range | Avg. | Range |
| 1 | 0.54 | 0.37-0.80 | 4.8 | 4.1-5.4 | 0.0 | 0.0-0.0 |
| 2A | 1.20 | 0.23-7.30 | 6.2 | 4.7-10.0 | 1.1 | 0.0-6.8 |
| 2B | 9.97 | 0.86-138 | 8.3 | 6.3-10.7 | 4.6 | 0.0-10.8 |
| 3 | 0.08 | 0.02-0.31 | 3.7 | 2.7-4.7 | 29.3 | 24.6-40.8 |
| 4 | 1.96 | 0.05-44 | 7.6 | 5.7-9.8 | 16.3 | 5.8-35.0 |
| Ttl. | 2.08 | 0.02-138 | 7 | 2.7-10.7 | 6.3 | 0.0-40.8 |

a) Isopach map of sand "A" from the Garland Member of the Black Island Formation (Winnipeg Group). Black dots represent control wells. Contour lines are in 2 ft. intervals and contour fill changes in 4 ft. intervals. Documented major fold axis traces are displayed as dark grey lines, while the dashed lines represent faults.

b) Isopach map of sand "B" from the Garland Member of the Black Island Formation (Winnipeg Group). Black dots represent control wells. Contour lines are in 1 ft. intervals and contour fill changes in 2 ft. intervals. Documented major fold axis traces are displayed as dark grey lines, while the dashed lines represent faults.

c) Isopach map of sand "C" from the Garland Member of the Black Island Formation (Winnipeg Group). Black dots represent control wells. Contour lines are in 1 ft. intervals. Documented major fold axis traces are displayed as dark grey lines, while the dashed lines represent faults. The orange stars show the locations of core analysis data from sand "C".