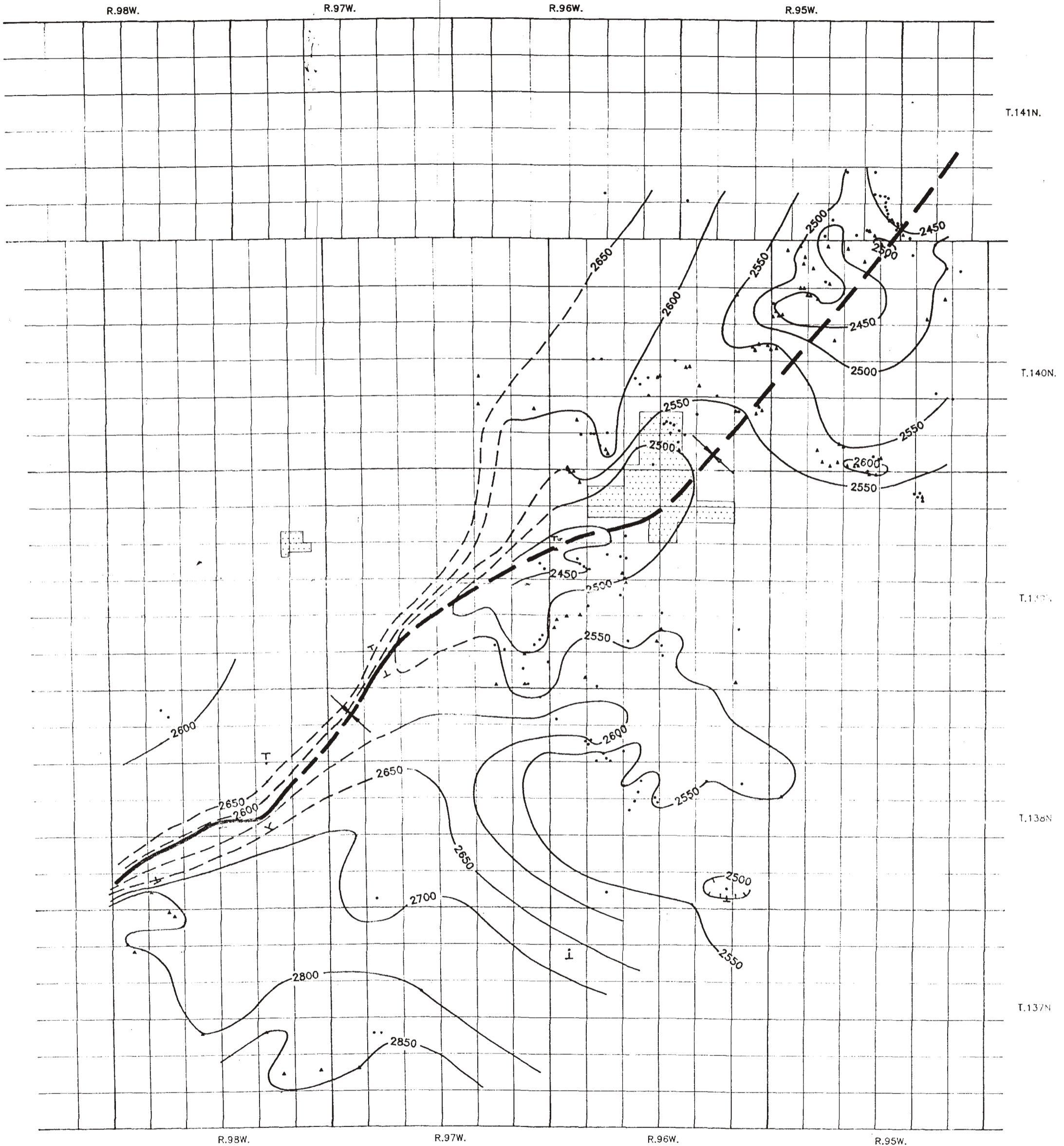


STRUCTURAL CONTOUR MAP ON THE BEAR DEN MEMBER (PALEOCENE) OF THE GOLDEN VALLEY FORMATION



This map shows the altitude and structure of the Bear Den Member of the Golden Valley Formation. The contours reveal a gently folded northeast trending syncline. Contour interval 50 feet. Solid triangles indicate control points on the Taylor bed; solid circles indicate control points on the Bear Den Member. Scale approximately 1:164,000.

VII
PLATE
N.D.G.S. OFR