

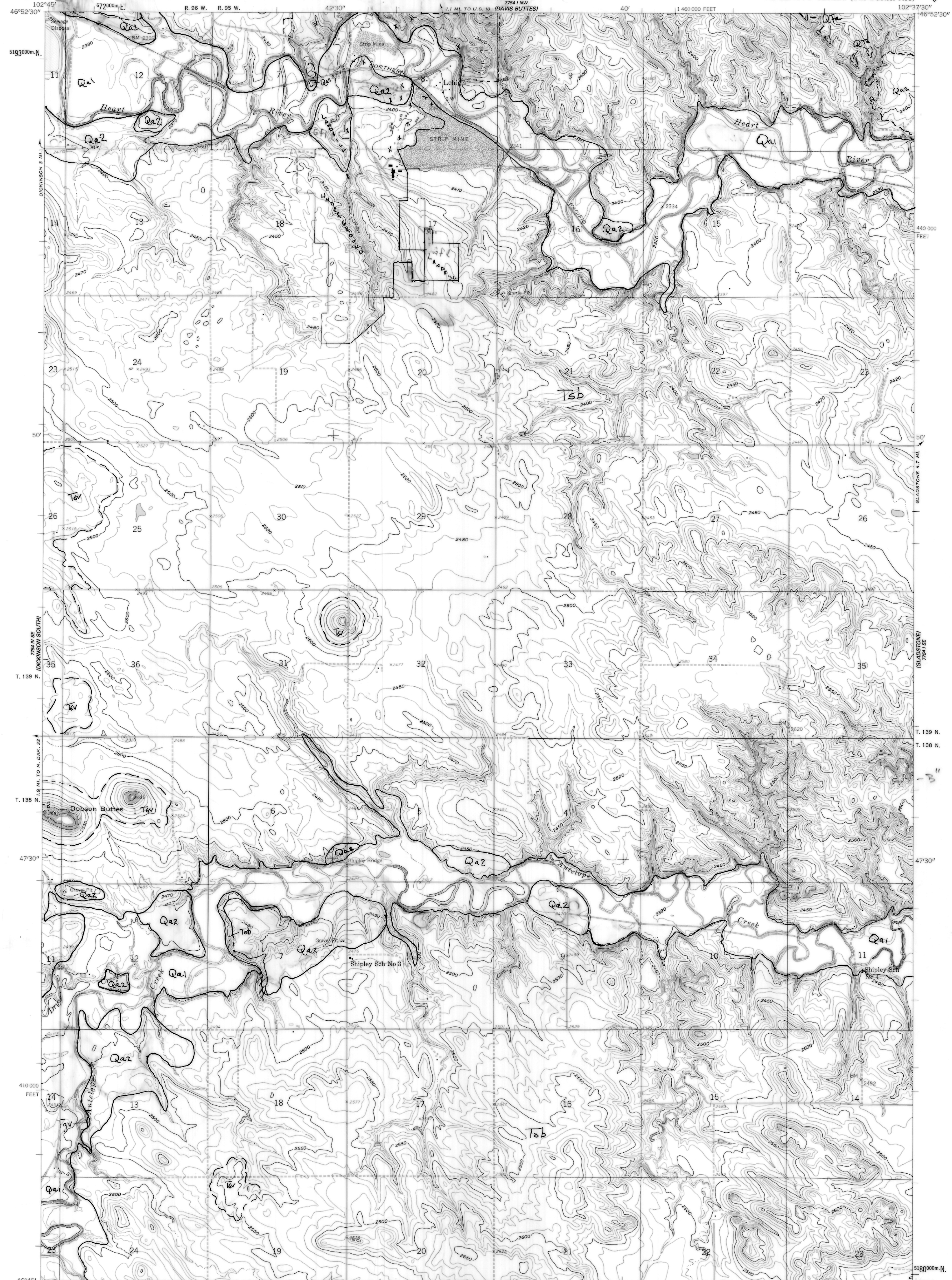
7784 NW  
(DICKINSON NORTH)

UNITED STATES  
DEPARTMENT OF THE INTERIOR  
GEOLOGICAL SURVEY

STATE OF NORTH DAKOTA  
WATER COMMISSION

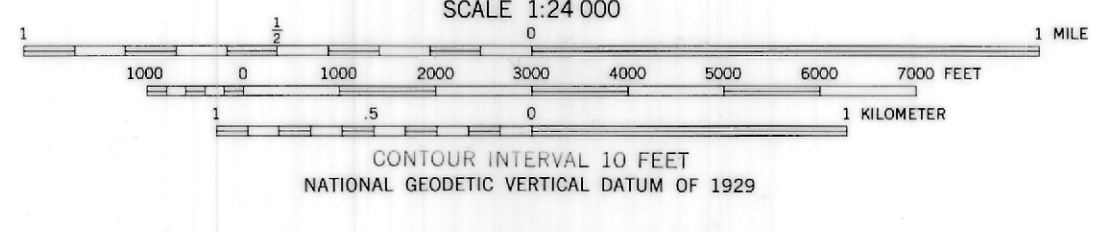
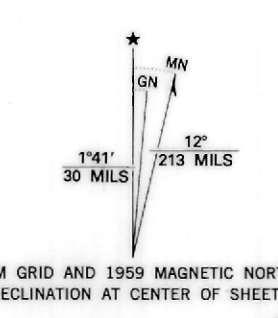
LEHIGH QUADRANGLE  
NORTH DAKOTA—STARK CO.  
7.5 MINUTE SERIES (TOPOGRAPHIC)

7784 NE  
(DICKINSON NORTH)



X collapse Hole

Mapped, edited, and published by the Geological Survey  
Control by USGS and USC&GS  
Topography from aerial photographs by photogrammetric methods  
Aerial photographs taken 1957. Field check 1959  
Polyconic projection. 1927 North American datum  
10,000-foot grid based on North Dakota coordinate system,  
south zone  
1000-meter Universal Transverse Mercator grid ticks,  
zone 13, shown in blue  
To place on the predicted North American Datum 1983,  
move the projection lines 4 meters north and  
37 meters east as shown by dashed corner ticks



ROAD CLASSIFICATION  
Light-duty ————— Unimproved dirt - - - - -

Geology by E.C. MURPHY  
1945  
MAP LEGEND IN ACCOMPANYING REPORT

THIS MAP COMPLIES WITH NATIONAL MAP ACCURACY STANDARDS  
FOR SALE BY U.S. GEOLOGICAL SURVEY, DENVER, COLORADO 80225, OR RESTON, VIRGINIA 22092  
AND NORTH DAKOTA WATER COMMISSION, BISMARCK, NORTH DAKOTA 58501  
A FOLDER DESCRIBING TOPOGRAPHIC MAPS AND SYMBOLS IS AVAILABLE ON REQUEST

LEHIGH, N. DAK.

46102-66-TF-024  
1959

DMA 7784 1 SW-SERIES V871

PLATE 4 NDCS OPR 95-1