

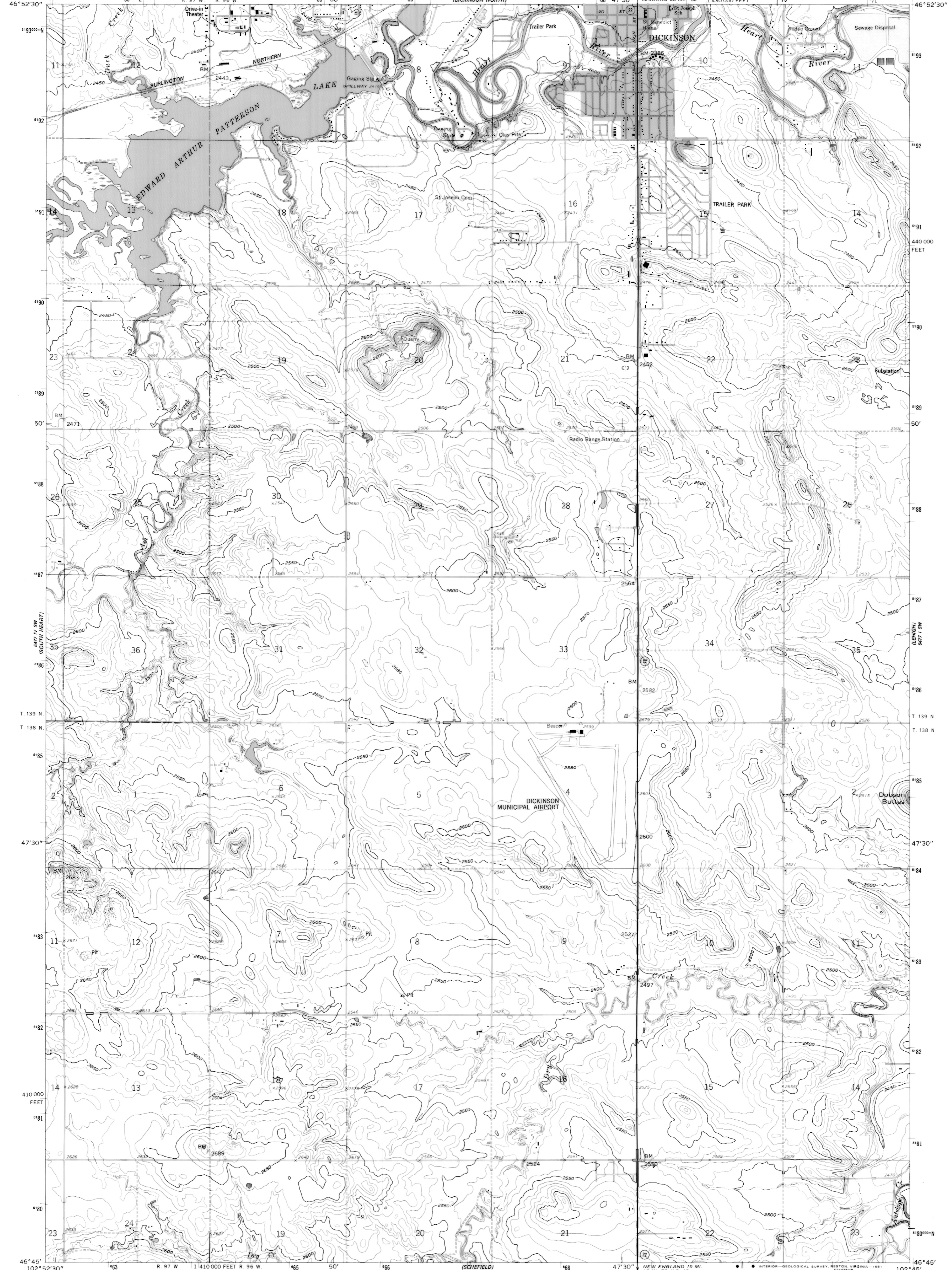
5477 IV NW
(REVISED 1981)
5477 III SW
(REVISED 1981)

UNITED STATES
DEPARTMENT OF THE INTERIOR
GEOLOGICAL SURVEY

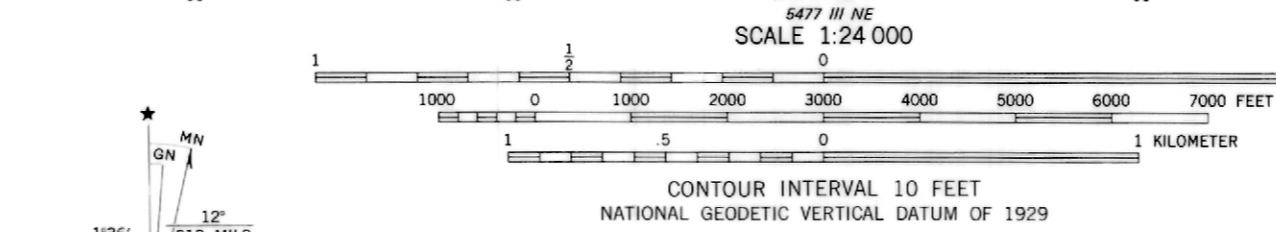
STATE OF NORTH DAKOTA
WATER COMMISSION

DICKINSON SOUTH QUADRANGLE
NORTH DAKOTA—STARK CO.
7.5 MINUTE SERIES (TOPOGRAPHIC)

5477 IV NE
(REVISED 1981)
5477 III NE
(REVISED 1981)



Mapped, edited, and published by the Geological Survey
Control by USGS and USC&GS
Topography from aerial photographs by photogrammetric methods
Aerial photographs taken 1957. Field check 1959
Polyconic projection. 1927 North American datum
10,000-foot grid based on North Dakota coordinate system,
south zone
1000-meter Universal Transverse Mercator grid ticks,
zone 13, shown in blue
Red tint indicates area in which only
landmark buildings are shown
To place on the predicted North American Datum 1983
move the projection lines 4 meters north and
38 meters east as shown by dashed corner ticks



UTM GRID AND 1981 MAGNETIC NORTH FOR SALE BY U. S. GEOLOGICAL SURVEY, DENVER, COLORADO 80225, OR RESTON, VIRGINIA 22092
AND STATE WATER COMMISSION, BISMARCK, NORTH DAKOTA 58501
A FOLDER DESCRIBING TOPOGRAPHIC MAPS AND SYMBOLS IS AVAILABLE ON REQUEST

ROAD CLASSIFICATION
Heavy-duty ——— Light-duty ———
Unimproved dirt - - - - -
○ State Route

DICKINSON SOUTH, N. DAK.
N4645—W10245/7.5
1959
PHOTOREVISED 1981
DMA 5477 IV SE—SERIES V871