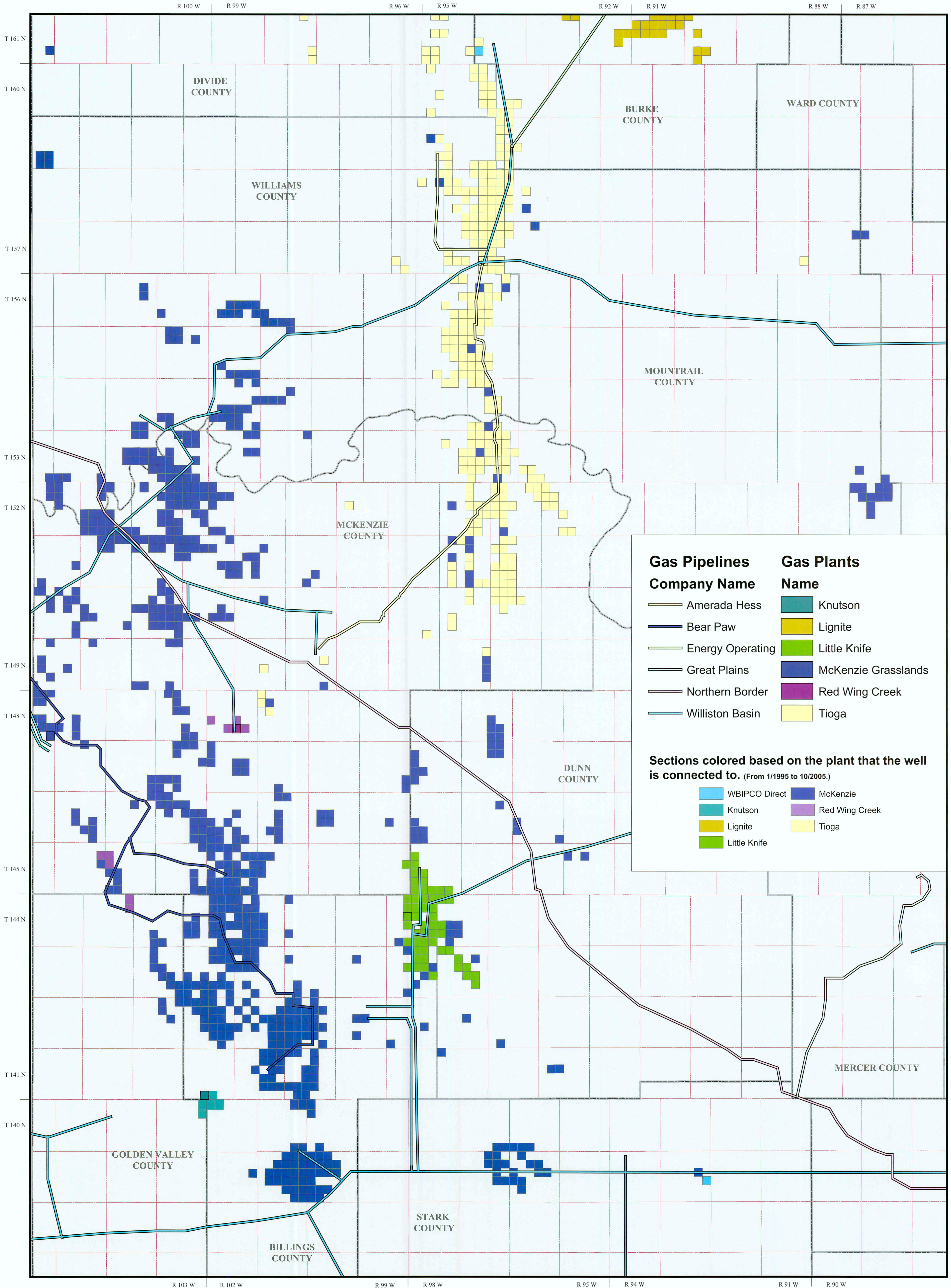


North Dakota Deep Gas Processing and Transportation

2006

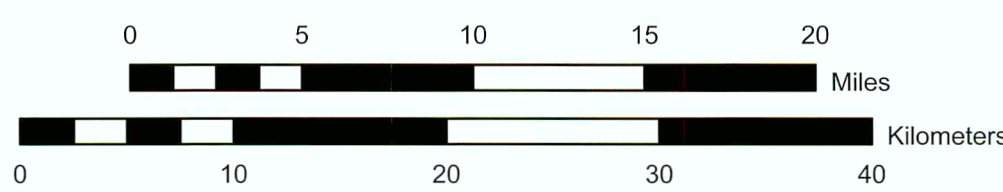


Gas Pipelines		Gas Plants	
Company Name		Name	
	Amerada Hess		Knutson
	Bear Paw		Lignite
	Energy Operating		Little Knife
	Great Plains		McKenzie Grasslands
	Northern Border		Red Wing Creek
	Williston Basin		Tioga

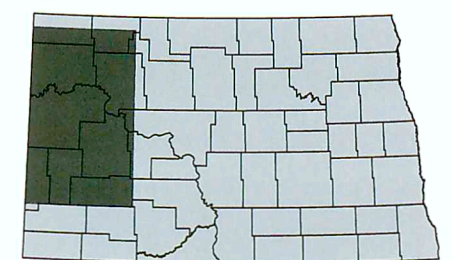
Sections colored based on the plant that the well is connected to. (From 1/1995 to 10/2005.)

	WBIPCO Direct		McKenzie
	Knutson		Red Wing Creek
	Lignite		Tioga
	Little Knife		

Scale 1:355,000



1927 North American Datum
 Standard parallel 47° 30'
 Mercator Projection
 Central meridian 102° 00'



North Dakota