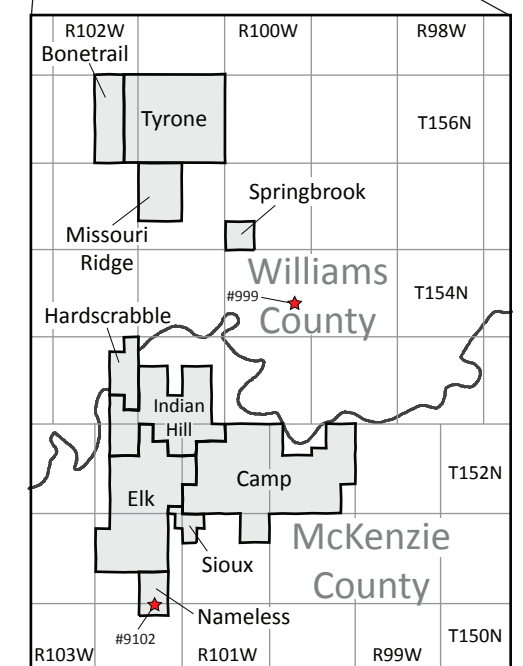
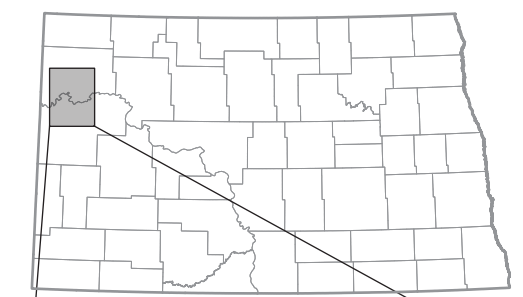
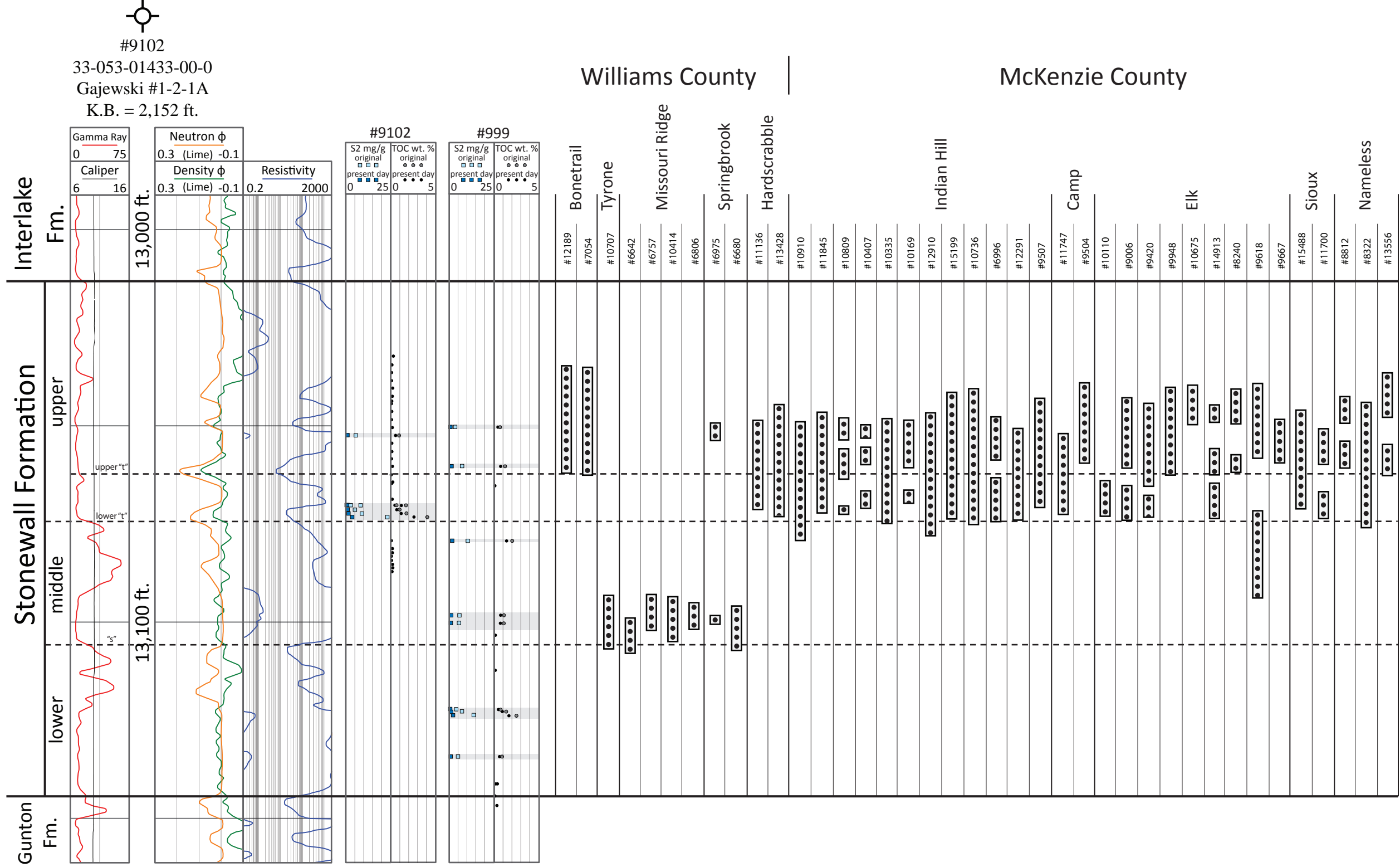
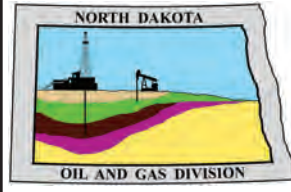


# Plate II

Timothy O. Nesheim



Oil fields (light grey) containing productive Stonewall wells within Williams and northwestern McKenzie counties. The red stars show the locations of the Stonewall cores sampled for TOC and RockEval analysis.

**Plate II.** Approximate stratigraphic locations of Stonewall perforations (grey shaded rectangles with black dots) for most Stonewall productive wells from northwestern North Dakota with example wireline log set and TOC-S2 core data. Grey shaded intervals within the S2-TOC data represent the approximate stratigraphic extent of organic-rich source beds. The data from well #999 (J. M. Donahue #1) is adjusted to approximately the equivalent stratigraphic positions of the Gajewski #1-2-1A.