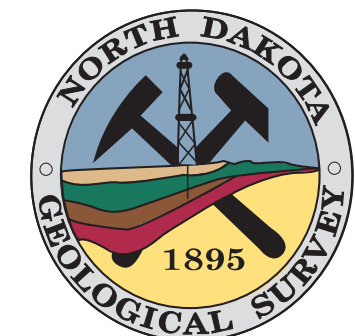
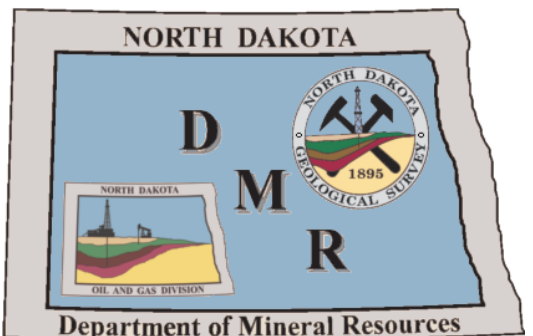
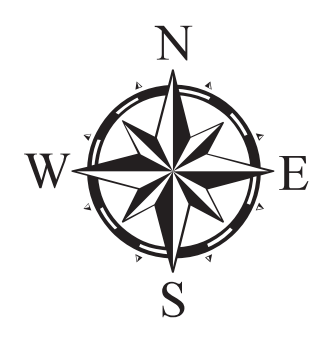
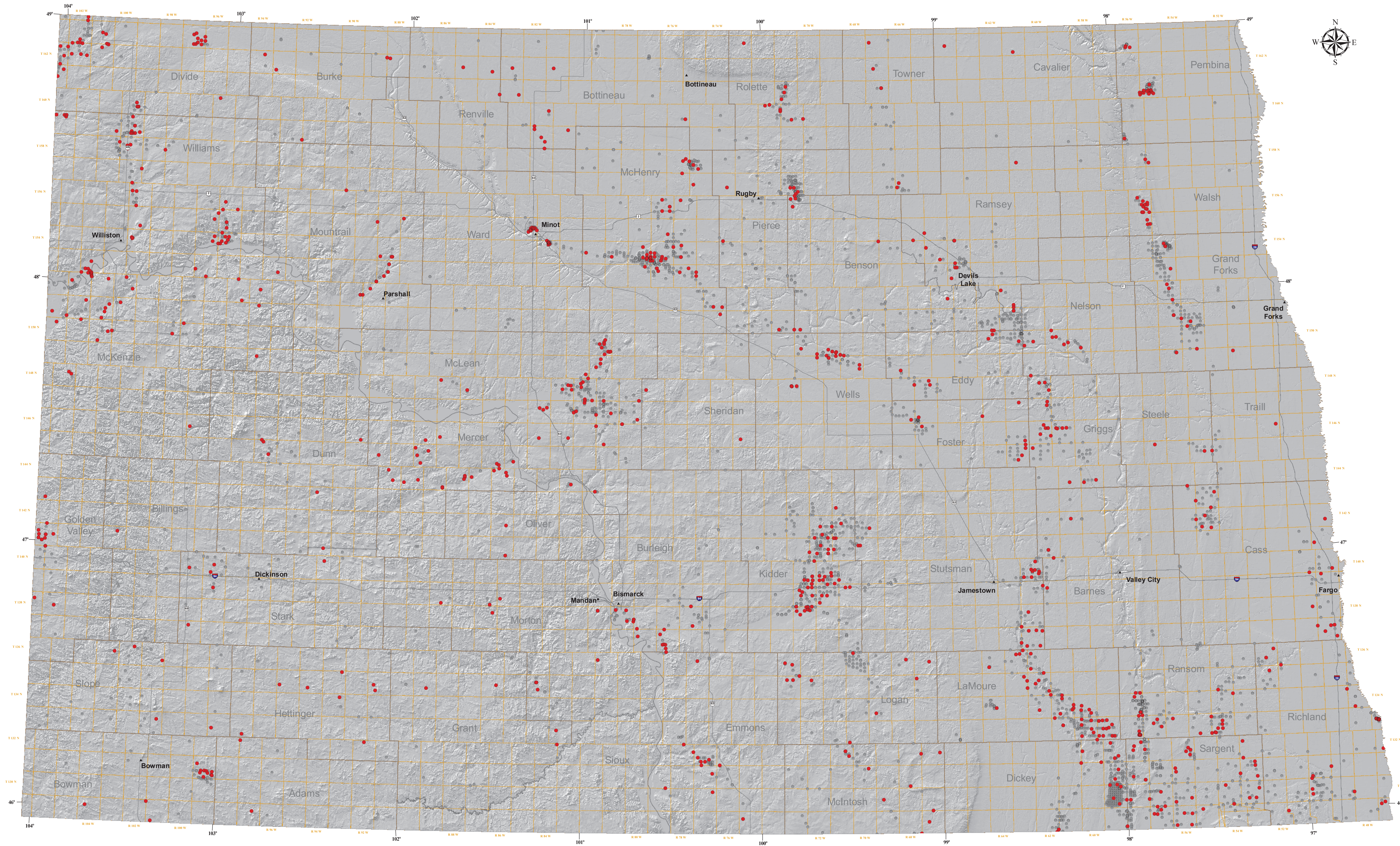


Locations of FID Shallow Gas Occurrences in North Dakota

Fred J. Anderson, Cassie B. Gudmunsen, Brian H. Hall, Adam J. Ries, Allison R. Christensen, and Bailey J. Bubach



2010



Explanation

The investigation of shallow natural gas occurrences within existing ground-water observation and stock wells was conducted in a reconnaissance fashion during the 2006 - 2010 field seasons in 52 selected counties in North Dakota. A total of 9,390 monitoring well sites were considered for field investigation and testing. Of these, 4,325 were found to exist in the field and were tested for the presence of methane using a portable flame-ionization detector (FID). A total of 905 wells (21%) returned positive FID instrument readings consistent with a methane shallow gas occurrence and are presented on this map at a scale of 1:500,000. 3,420 wells showed no response (0.0 ppm as methane in air). The intent of this map is as an exploration tool, to help identify potential candidate areas for future oil and gas exploration and focused field investigation.

- FID Shallow Gas Occurrence
- Other Wells Tested, No FID Response
- County Boundaries
- Township Boundaries
- Highways
- ▲ Cities

References

Anderson, F.J. and Bubach, B.J., 2010. Field Screening for Shallow Gas in Dickey County, North Dakota. North Dakota Geological Survey, Geologic Investigations No. 126, 1:150,000 scale map.

Anderson, F.J. and Bubach, B.J., 2010. Field Screening for Shallow Gas in Pembina County, North Dakota. North Dakota Geological Survey, Geologic Investigations No. 125, 1:150,000 scale map.

Anderson, F.J. and Bubach, B.J., 2010. Field Screening for Shallow Gas in Walsh County, North Dakota. North Dakota Geological Survey, Geologic Investigations No. 124, 1:150,000 scale map.

Anderson, F.J. and Bubach, B.J., 2010. Field Screening for Shallow Gas in Grand Forks County, North Dakota. North Dakota Geological Survey, Geologic Investigations No. 123, 1:150,000 scale map.

Anderson, F.J. and Christensen, A.R., 2010. Field Screening for Shallow Gas in Divide County, North Dakota. North Dakota Geological Survey, Geologic Investigations No. 108, 1:150,000 scale map.

Anderson, F.J. and Christensen, A.R., 2010. Field Screening for Shallow Gas in Adams County, North Dakota. North Dakota Geological Survey, Geologic Investigations No. 107, 1:150,000 scale map.

Anderson, F.J. and Christensen, A.R., 2010. Field Screening for Shallow Gas in Bowman County, North Dakota. North Dakota Geological Survey, Geologic Investigations No. 106, 1:150,000 scale map.

Anderson, F.J. and Christensen, A.R., 2010. Field Screening for Shallow Gas in Golden Valley County, North Dakota. North Dakota Geological Survey, Geologic Investigations No. 105, 1:150,000 scale map.

Anderson, F.J. and Christensen, A.R., 2010. Field Screening for Shallow Gas in Billings County, North Dakota. North Dakota Geological Survey, Geologic Investigations No. 104, 1:150,000 scale map.

Anderson, F.J. and Christensen, A.R., 2010. Field Screening for Shallow Gas in Stark County, North Dakota. North Dakota Geological Survey, Geologic Investigations No. 103, 1:150,000 scale map.

Anderson, F.J. and Christensen, A.R., 2010. Field Screening for Shallow Gas in Morton County, North Dakota. North Dakota Geological Survey, Geologic Investigations No. 102, 1:150,000 scale map.

Anderson, F.J. and Christensen, A.R., 2010. Field Screening for Shallow Gas in McLean County, North Dakota. North Dakota Geological Survey, Geologic Investigations No. 101, 1:150,000 scale map.

Anderson, F.J. and Christensen, A.R., 2010. Field Screening for Shallow Gas in Mountrail County, North Dakota. North Dakota Geological Survey, Geologic Investigations No. 100, 1:150,000 scale map.

Anderson, F.J. and Christensen, A.R., 2010. Field Screening for Shallow Gas in Williston County, North Dakota. North Dakota Geological Survey, Geologic Investigations No. 99, 1:150,000 scale map.

Anderson, F.J. and Christensen, A.R., 2010. Field Screening for Shallow Gas in Grand Forks County, North Dakota. North Dakota Geological Survey, Geologic Investigations No. 98, 1:150,000 scale map.

Anderson, F.J. and Christensen, A.R., 2010. Field Screening for Shallow Gas in Grand Forks County, North Dakota. North Dakota Geological Survey, Geologic Investigations No. 97, 1:150,000 scale map.

Anderson, F.J. and Christensen, A.R., 2010. Field Screening for Shallow Gas in Grand Forks County, North Dakota. North Dakota Geological Survey, Geologic Investigations No. 96, 1:150,000 scale map.

Anderson, F.J. and Christensen, A.R., 2010. Field Screening for Shallow Gas in Grand Forks County, North Dakota. North Dakota Geological Survey, Geologic Investigations No. 95, 1:150,000 scale map.

Anderson, F.J. and Christensen, A.R., 2010. Field Screening for Shallow Gas in Grand Forks County, North Dakota. North Dakota Geological Survey, Geologic Investigations No. 94, 1:150,000 scale map.

Anderson, F.J. and Christensen, A.R., 2010. Field Screening for Shallow Gas in Grand Forks County, North Dakota. North Dakota Geological Survey, Geologic Investigations No. 93, 1:150,000 scale map.

Anderson, F.J. and Christensen, A.R., 2010. Field Screening for Shallow Gas in Grand Forks County, North Dakota. North Dakota Geological Survey, Geologic Investigations No. 92, 1:150,000 scale map.

Anderson, F.J. and Christensen, A.R., 2010. Field Screening for Shallow Gas in Grand Forks County, North Dakota. North Dakota Geological Survey, Geologic Investigations No. 91, 1:150,000 scale map.

