

Lignite Reserves

Medicine Butte SW Quadrangle, North Dakota

Edward C. Murphy

2007

UNIT DESCRIPTIONS

- Geology Undifferentiated
- 1

Economic Coal Deposits

Economic coal deposits are those that meet the minimum criteria established by coal companies operating surface mines in North Dakota. These economic criteria include a minimum cumulative coal thickness of ten feet-typically occurring in less than two beds, a minimum individual bed thickness of at least 2.5 feet, a ratio of overburden to coal thickness of not more than 10:1, a minimum of 25 feet of overburden, and a maximum depth to coal of approximately 150 feet.

Geologic Symbols

- Extent of Local Lignite Reserves
- Data Points

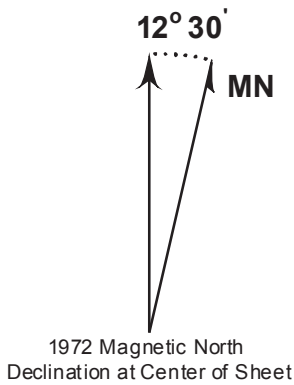
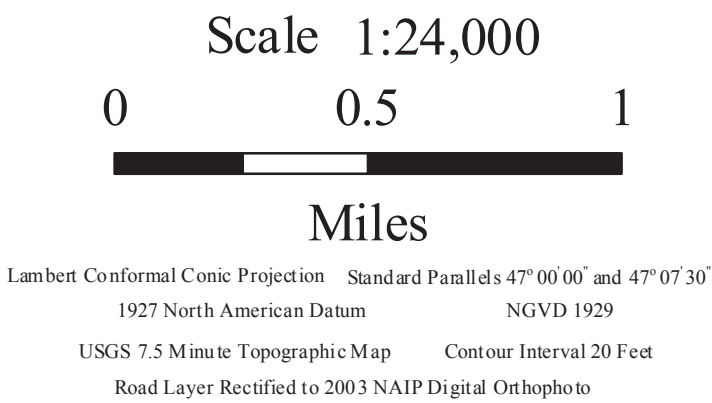
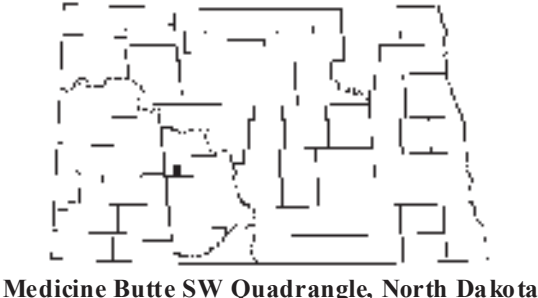
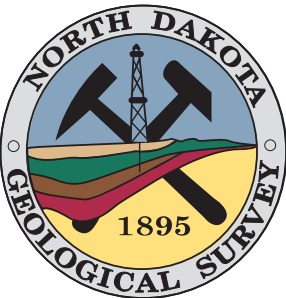
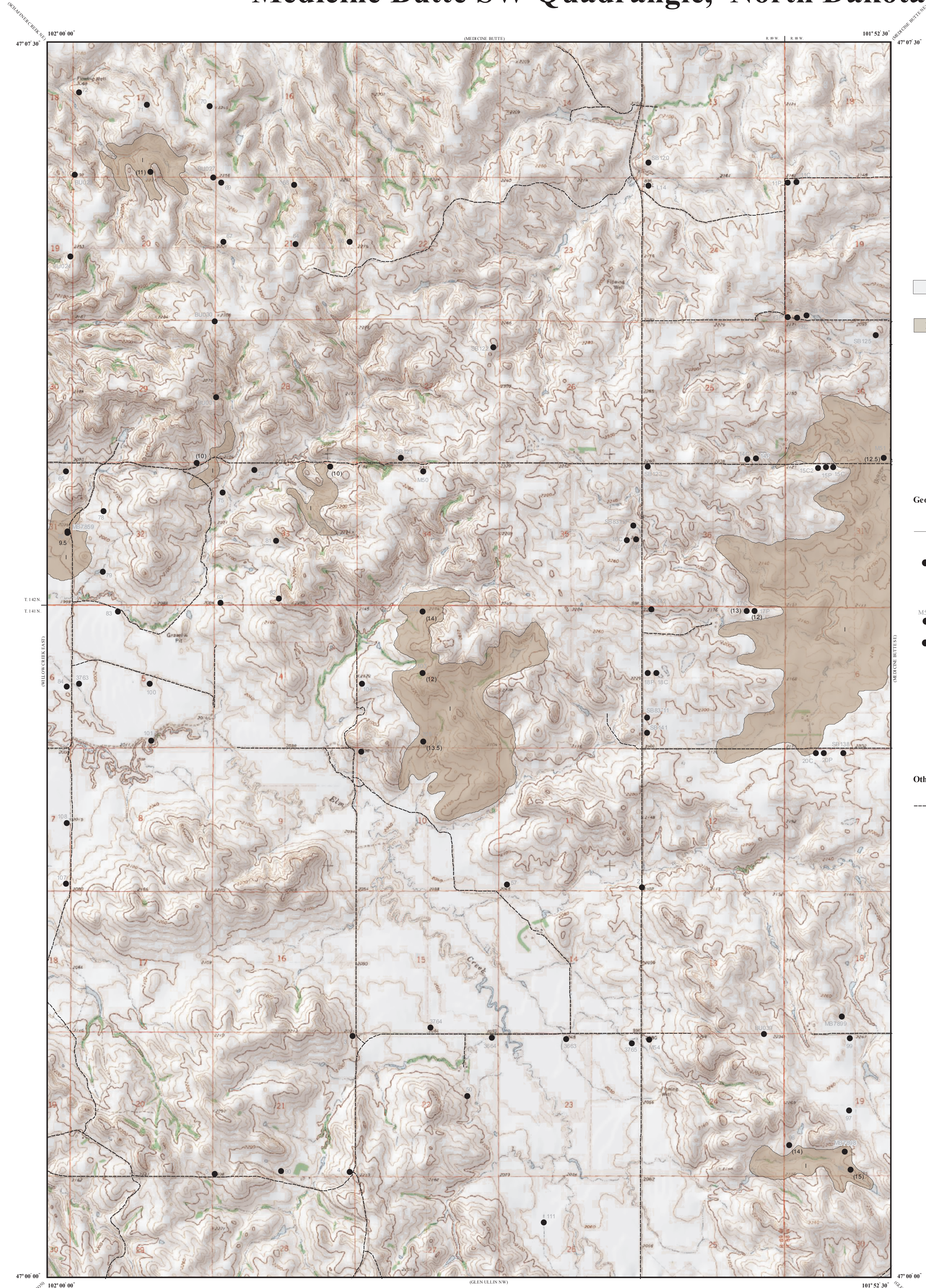
Includes Coal Exploration NDGS/USGS drill holes, Sub-surface Mineral drill holes, Oil & Gas drill holes, and NDSWC drill holes.
- M51

Drill Hole Numbers
- Thickness (in feet) of Mineable Lignite

12.5
Thickness in () signifies two beds of coal.
- Coal thicknesses were determined by interpretation of electric logs from individual drill holes. Gamma and density logs were typically available for coal exploration holes but, oil wells were often limited to a gamma log run through surface casing.

Other Features

- Unpaved Road



This project was supported by, in part by the U.S. Geological Survey, Department of Interior, under assistance awards 02ERTAG0016 and 05ERAG0053.