

Lignite Reserves

Tagus Quadrangle, North Dakota

Edward C. Murphy
2009

UNIT DESCRIPTIONS

GU Geology Undifferentiated

I Economic Coal Deposits

Economic coal deposits are those that meet the minimum criteria established by coal companies operating surface mines in North Dakota. These economic criteria include a minimum cumulative coal thickness of ten feet-typically occurring in less than two beds, a minimum individual bed thickness of at least 2.5 feet, a ratio of overburden to coal thickness of not more than 10:1, a minimum of 25 feet of overburden, and a maximum depth to coal of approximately 150 feet.

Geologic Symbols

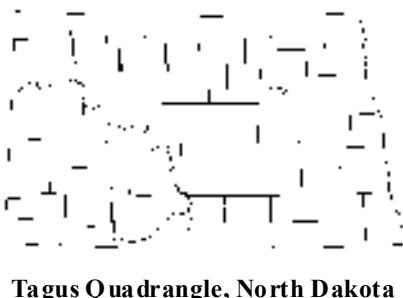
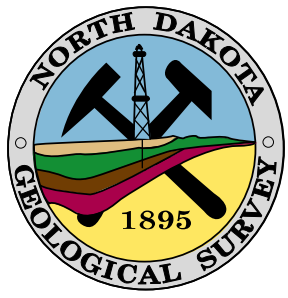
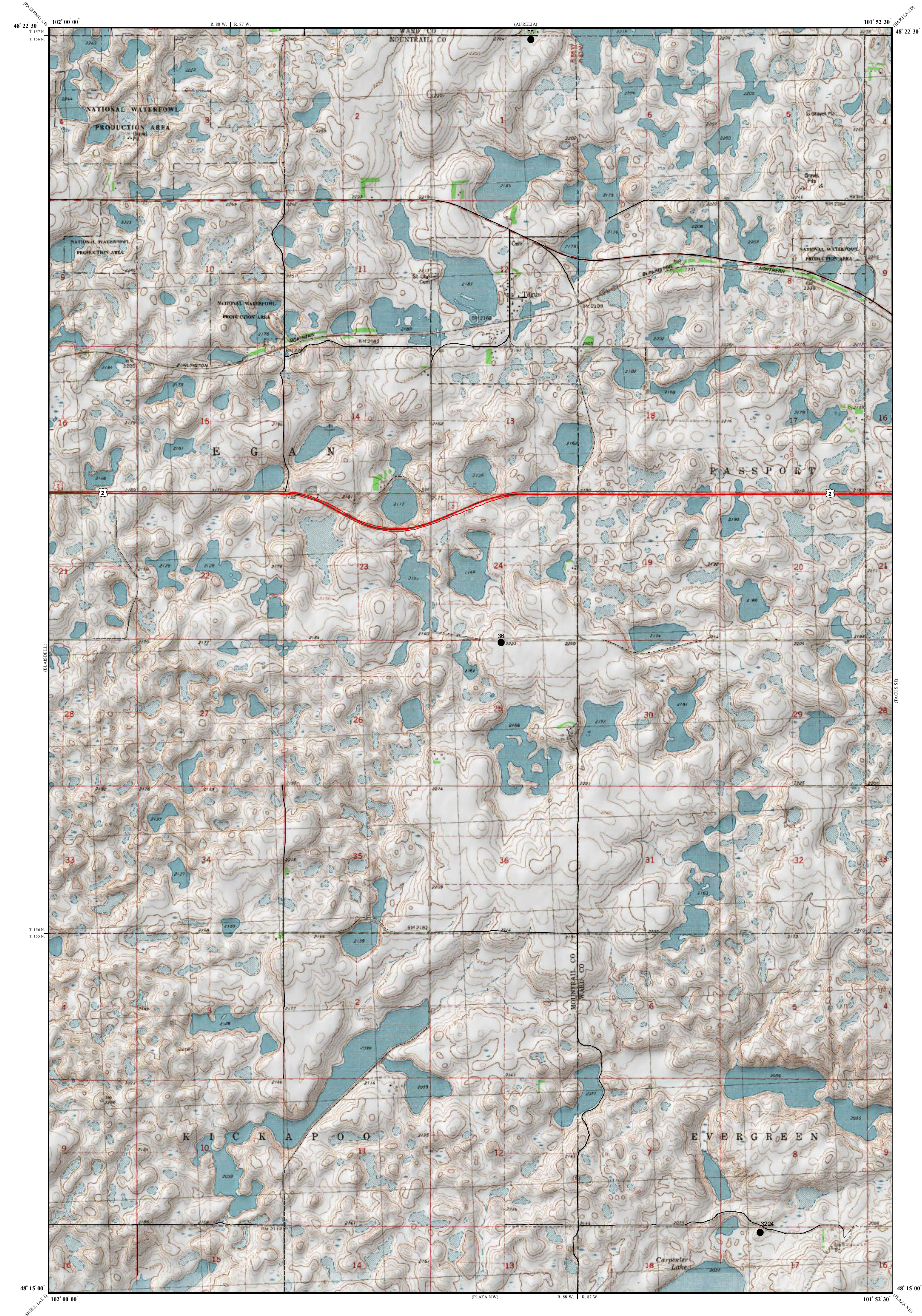
Extent of Local Lignite Reserves

Data Points
Includes coal exploration NDGS/USGS drill holes, sub-surface mineral drill holes, oil & gas wells, and NDSWC drill holes.

Drill Hole Numbers

Other Features

US Highway
Paved Road
Unpaved Road



Tagus Quadrangle, North Dakota

Scale 1:24,000
0 0.5 1
Miles
Lambert Conformal Conic Projection Standard Parallels 48° 15' 00" and 48° 22' 30"
1927 North American Datum NAD 1927
USGS 7.5 Minute Topographic Map - Contour Interval 10 Feet

12° 30'
MN
1980 Magnetic North Declination at Center of Sheet