

# Areas of Landslides

## Jud SE Quadrangle, North Dakota

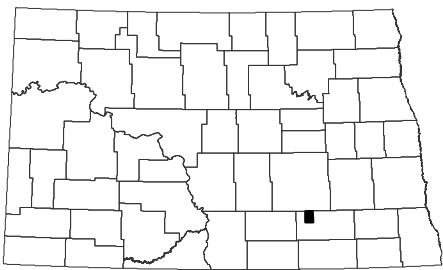
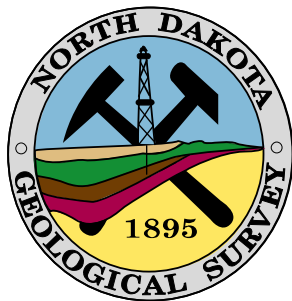
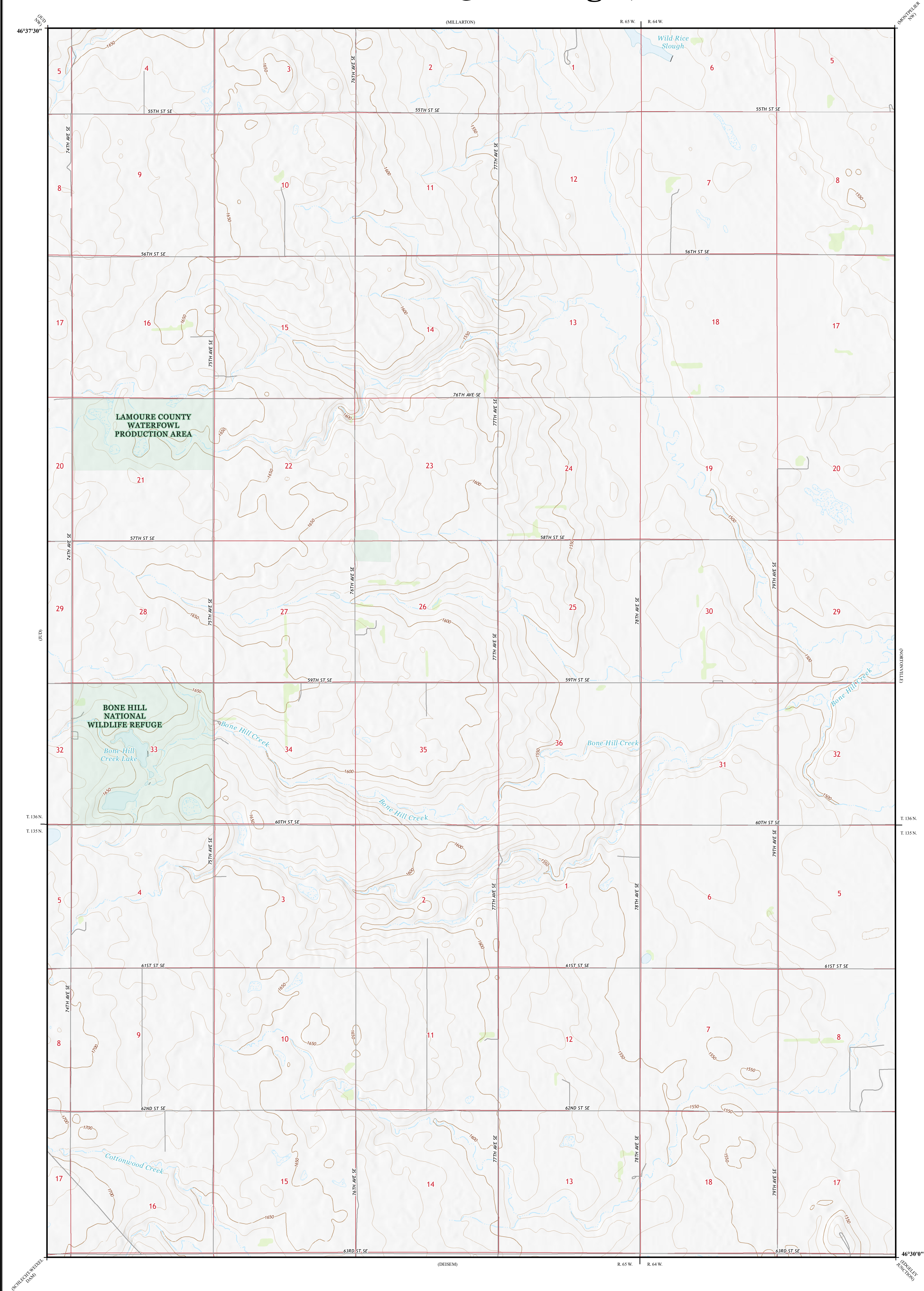
**Benjamin C. York  
&  
Levi D. Moxness**

**2025**

Areas of landslides were investigated within this quadrangle based on a review of county historical aerial photography flown in August 1964 by the United States Department of Agriculture (USDA). Additional data sources include digital orthophotography from the USDA National Agriculture Imagery Program (NAIP) flown in July to September 2024 and the North Dakota Geological Survey LiDAR Map Series, which compiles raw data flown in November 2020 to April 2021 from the North Dakota State Water Commission. From this investigation, no landslides were mapped within the quadrangle.

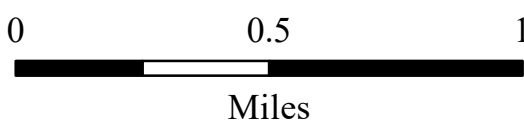
### ROAD CLASSIFICATION

- |               |                  |                 |             |
|---------------|------------------|-----------------|-------------|
| Expressway    |                  | Local Connector |             |
| Secondary Hwy |                  | Local Road      |             |
| Ramp          |                  | 4WD             |             |
|               | Interstate Route |                 | US Route    |
|               |                  |                 | State Route |



Jud SE Quadrangle, North Dakota

Scale 1:24,000



Lambert Conformal Conic Projection  
North American 1983 Datum  
USGS 7.5 Minute Topo Map

Standard Parallels 46°30'0\"/>



2019 Magnetic North  
Declination at Center of Sheet