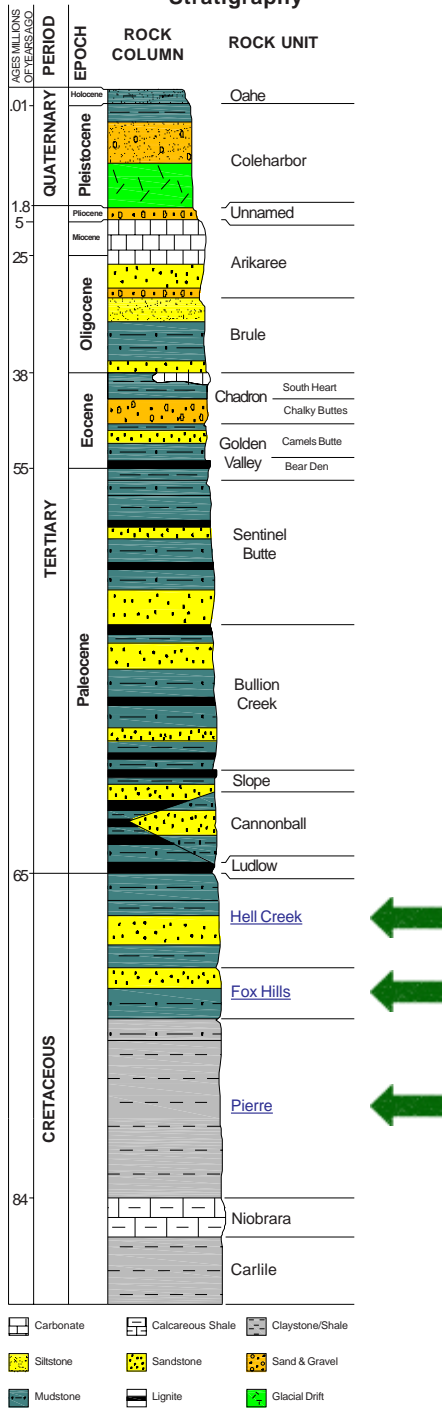


North Dakota Stratigraphy



Enchodus

Common Name:

Classification:

Class: Actinopterygii

Order: Aulopiformes

Family: Enchodontidae



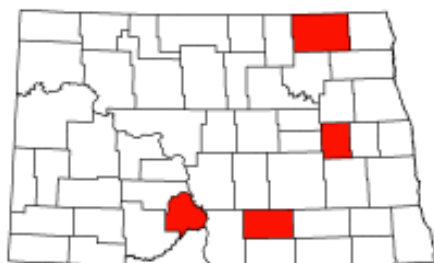
Tooth of the salmon-like fish, *Enchodus*. 5 mm high. Cretaceous [Fox Hills](#) Formation. Logan County. North Dakota State Fossil Collection.

Description:

Enchodus was a three-foot-long, salmon-like fish that inhabited the Western Interior Seaway during the Cretaceous. It was one of the most common Cretaceous marine fish.



Enchodus. Painting courtesy of Simon and Schuster Publishing company.



Locations where fossils have been found

ND State Fossil Collection

[Prehistoric Life of ND Map](#)

[North Dakota Geological Survey Home Page](#)