

**PETRIFIED LOGS EXHIBITED ON CAPITOL GROUNDS
DEDICATED TO E. L. "BUCK" WORTHINGTON ON ARBOR DAY MAY 3, 1991**

--John Hoganson

In the Survey's June, 1990 Newsletter I wrote about our plan to exhibit a petrified log on the State Capitol Grounds. A Paleocene "forest" of petrified trees, the dawn redwood Metasequoia, had been exposed along the shore of Lake Sakakawea because of low water levels in the reservoir. The Central Dakota Gem and Mineral Society approached the Survey for assistance in bringing one of these trees to Bismarck for public display. This project was accomplished last summer with the help of the Washburn detachment of the Army National Guard. The 80-foot-long fossil tree specimens are located in the Centennial Grove, on the west side of the State Capitol grounds.

Unfortunately, the leading proponent of the project, E. L. "Buck" Worthington of Mandan, passed away at age 79 shortly after the project was completed in August, 1990. It was decided that it would be appropriate to dedicate the fossilized logs to Buck. Buck, affectionately known as "Mr. Trees," was State Forester for the U. S. Soil Conservation Service from 1936 until he retired in 1970. After his "retirement" he became part-time superintendent of Morton County Parks and part-time Mandan City Forester until 1983. Buck was one of the original supporters of the statewide plan to plant 100,000,000 trees by the year 2000 as a Centennial project.

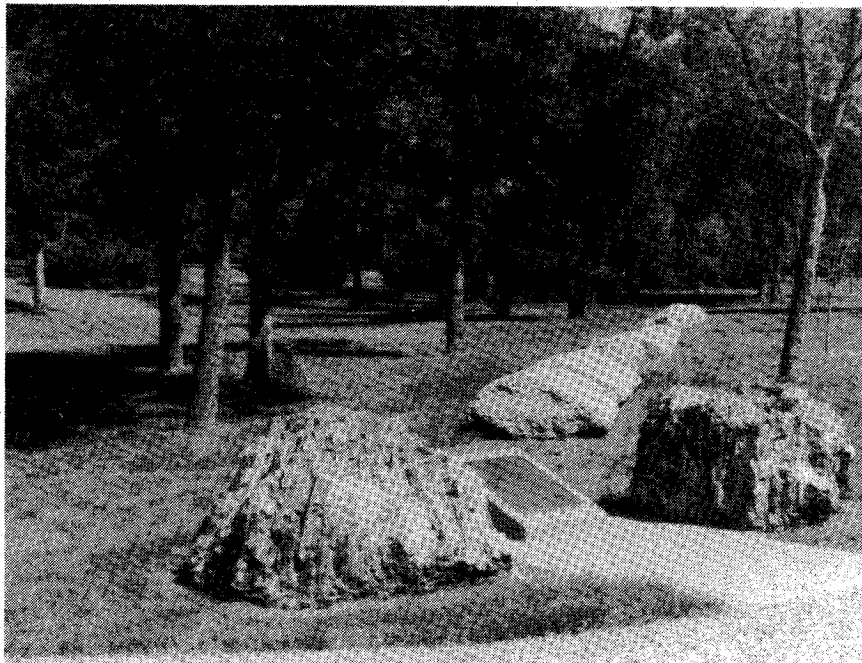
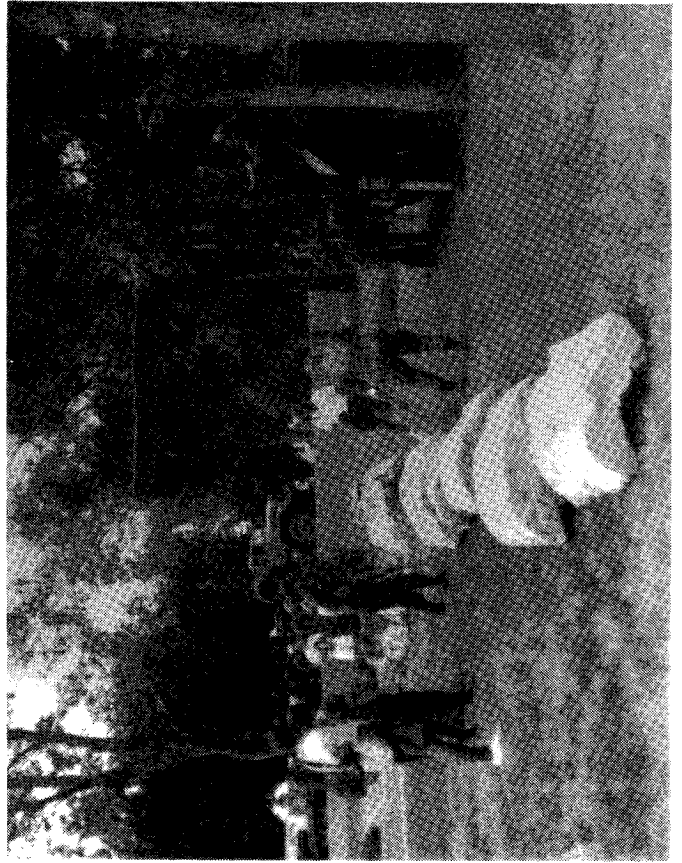
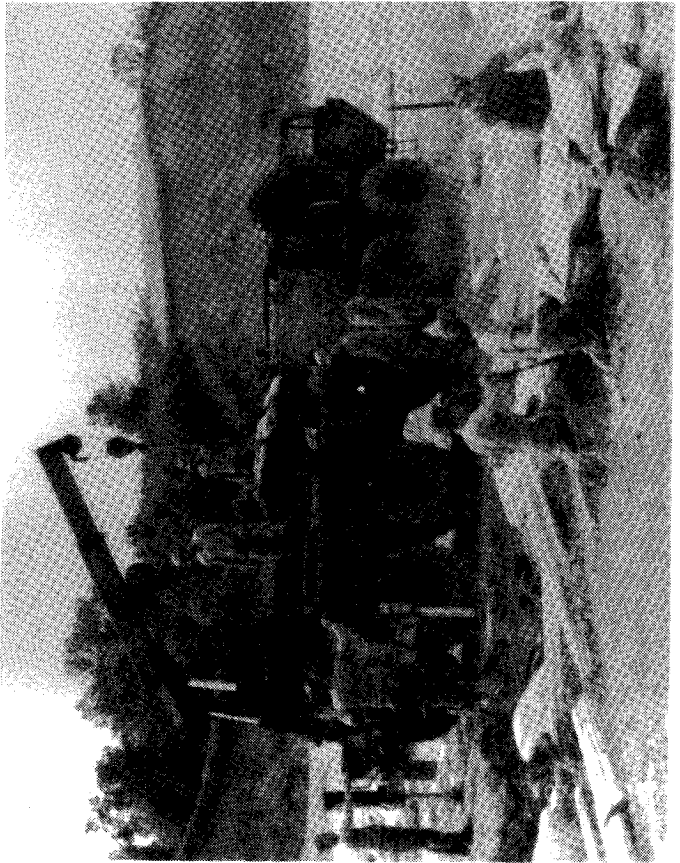
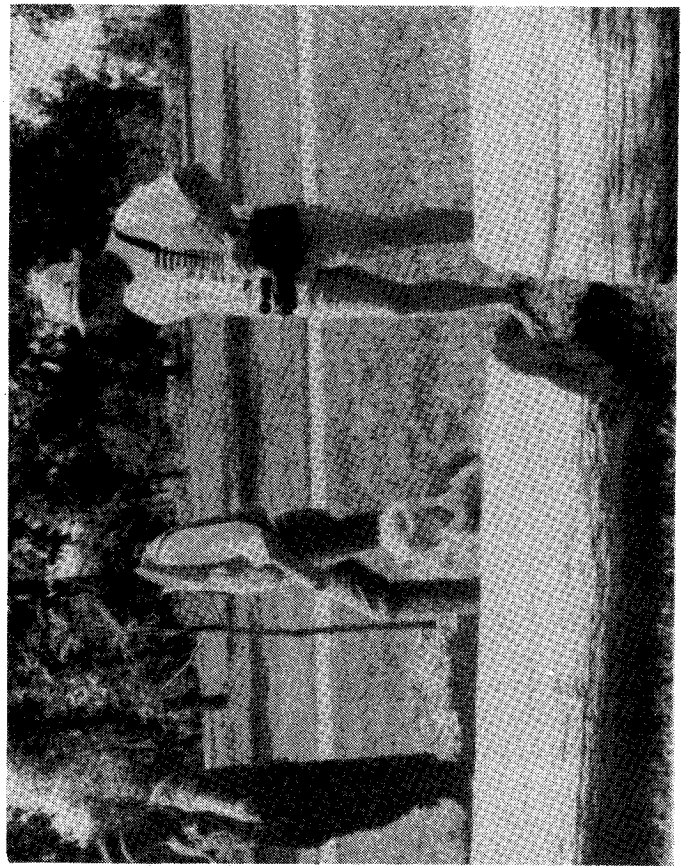
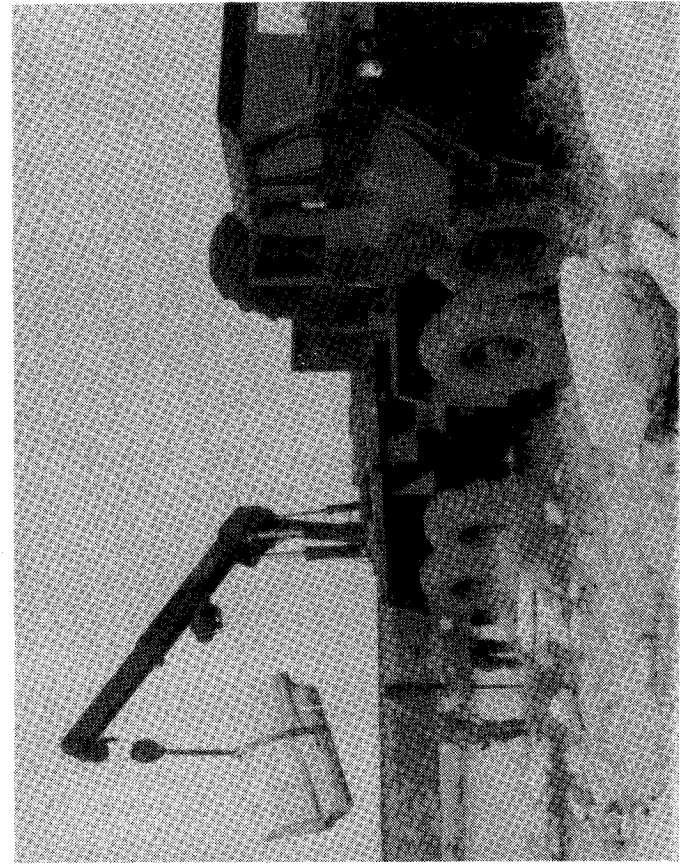


Figure 1. 80-foot-long Metasequoia log from the Paleocene (about 57 million years old) Sentinel Butte Formation displayed in Centennial Grove on the grounds of the State Capitol in Bismarck.



Figures 2-5. Excavation of the Metasequoia fossils near Beulah and placement of the fossils on the State Capitol grounds.