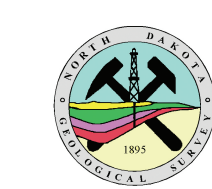
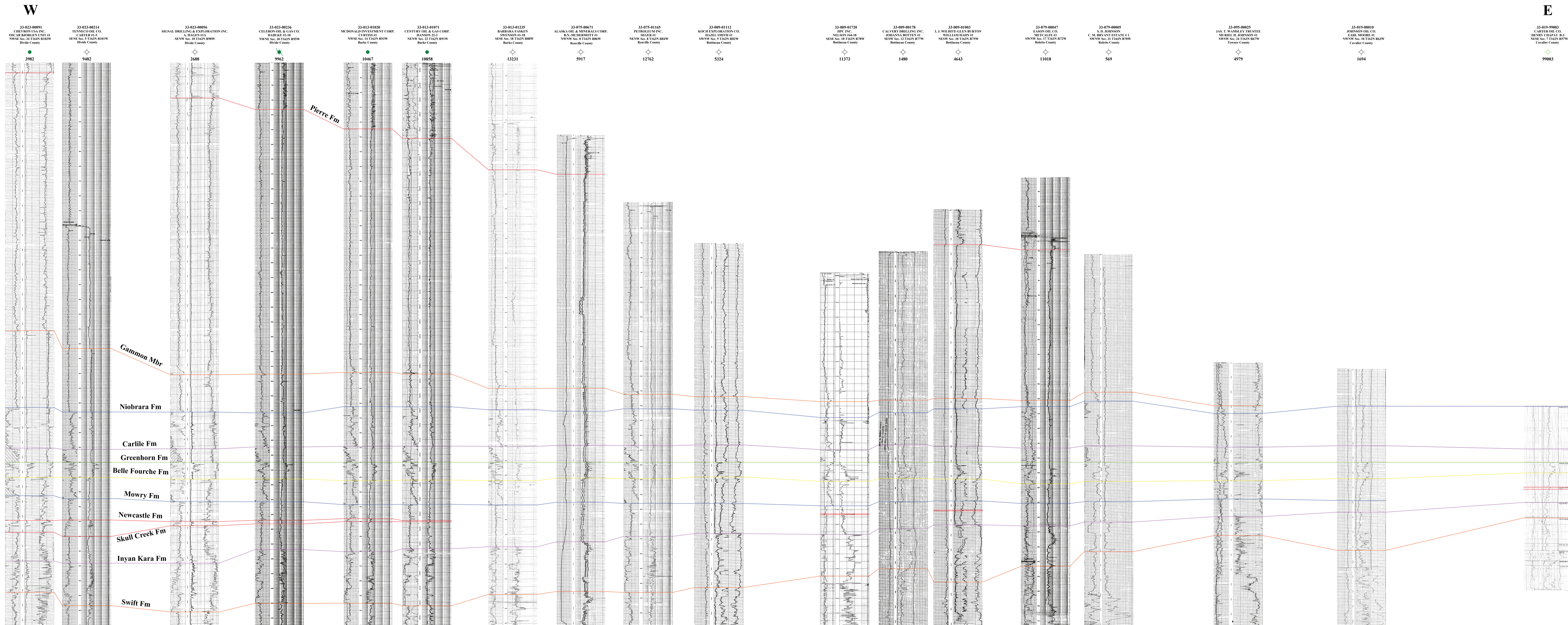


Preliminary Cross-Sections of Cretaceous Strata in North Dakota

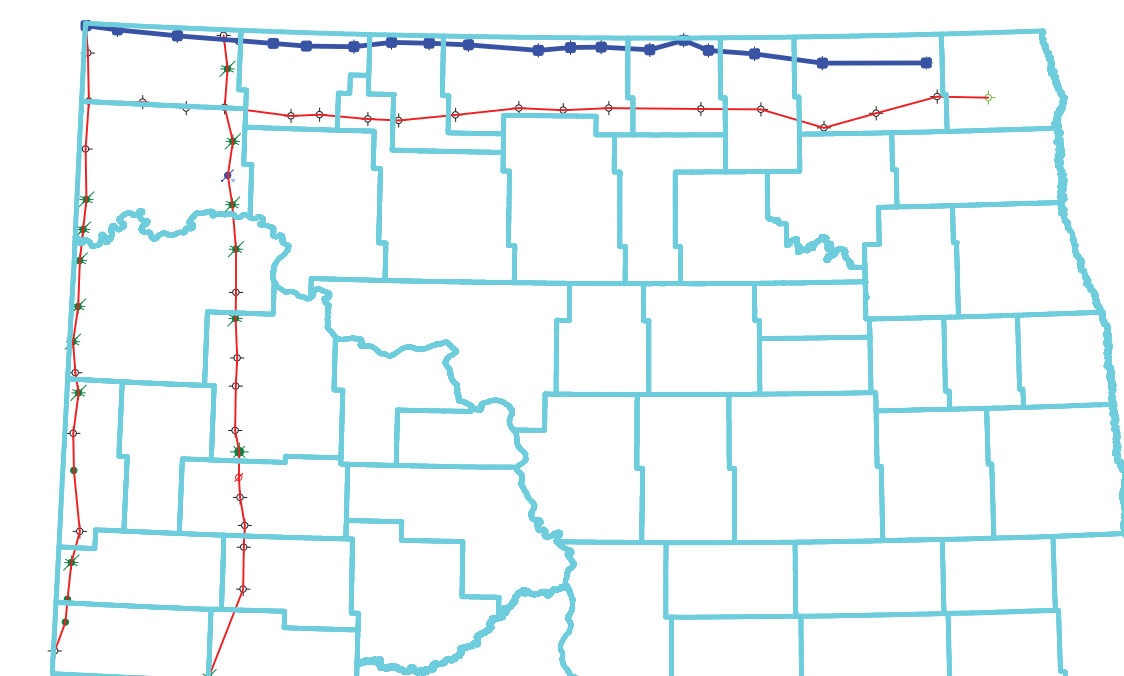


Richard D. LeFever and Julie A. LeFever

Cross-Section A



10 mi



These are stratigraphic cross-sections of Cretaceous strata in the most heavily drilled parts of North Dakota. Additional cross-sections in future publications will extend coverage to include the entire state. For specifics about the lithologies of individual formations or their vertical log characteristics, please refer to North Dakota Geological Survey Report of Investigation 106, Reference Logs for Cretaceous Formations in North Dakota.

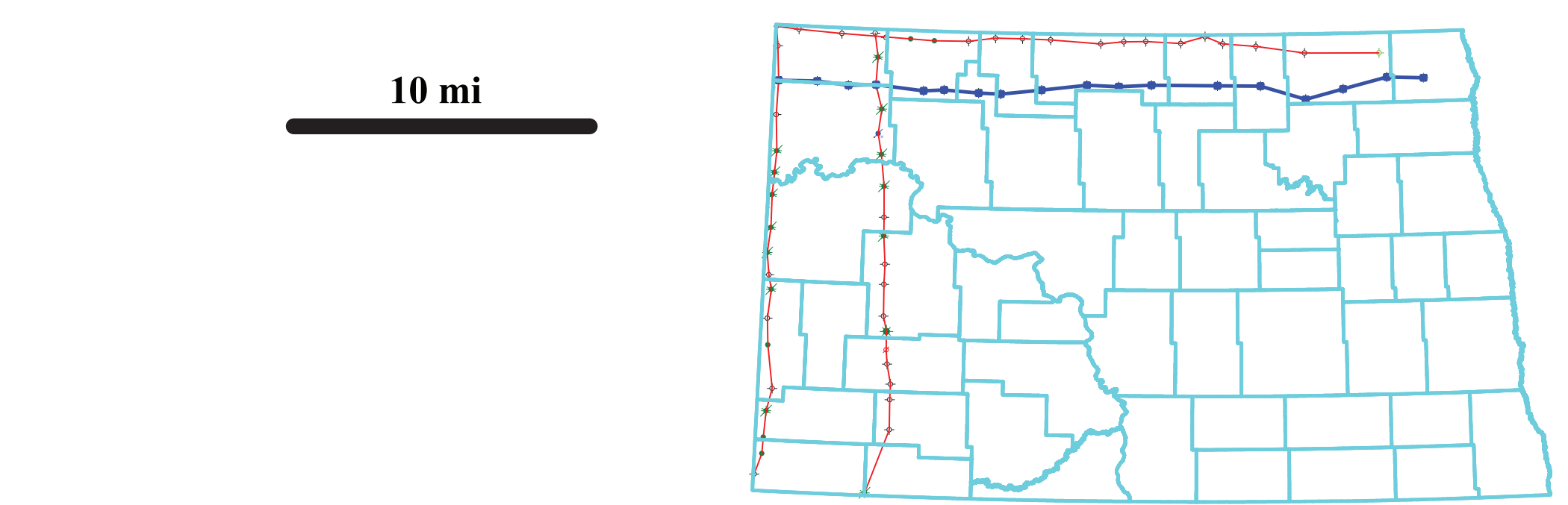
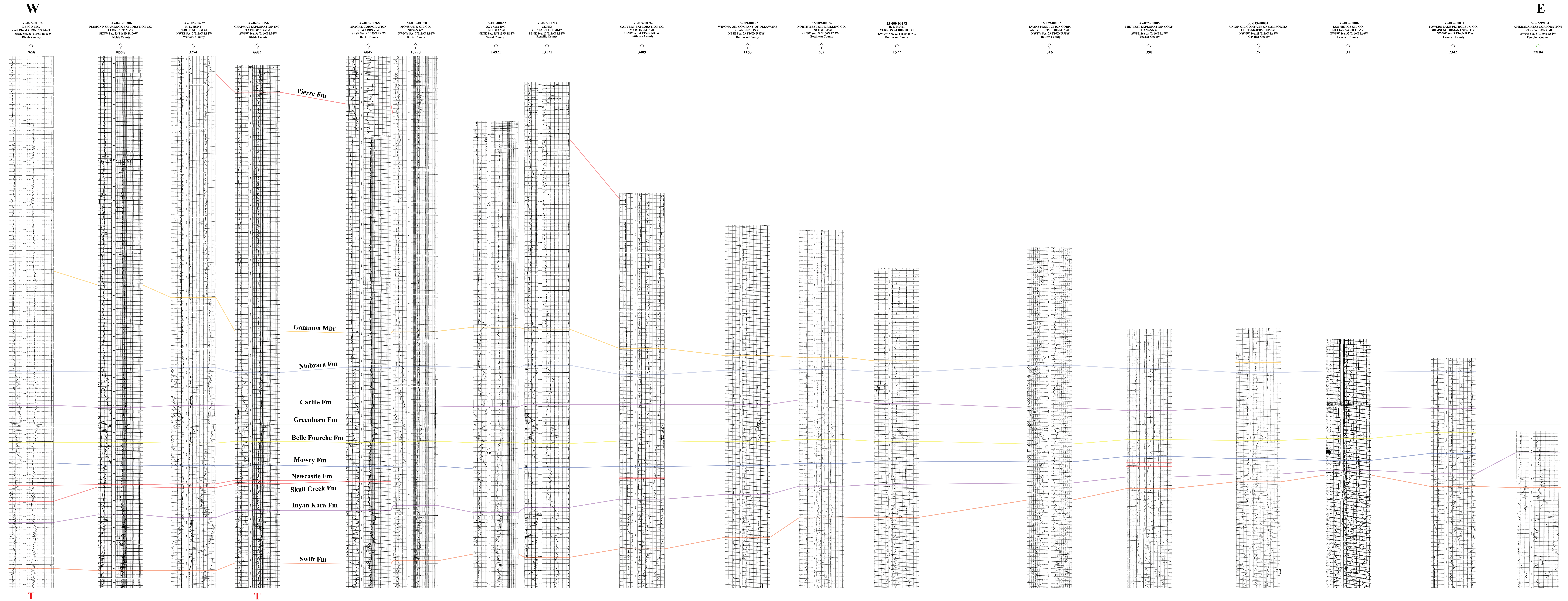
Datum is top of the Greenhorn Formation

Preliminary Cross-Sections of Cretaceous Strata in North Dakota



Richard D. LeFever and Julie A. LeFever

Cross-Section B



These are stratigraphic cross-sections of Cretaceous strata in the most heavily drilled parts of North Dakota. Additional cross-sections in future publications will expand coverage to include the entire state. For specifics about the techniques of individual formations or their well log characteristics, please refer to North Dakota Geological Survey Report of Investigation 106, *Reference Logs for Cretaceous Formations in North Dakota*.

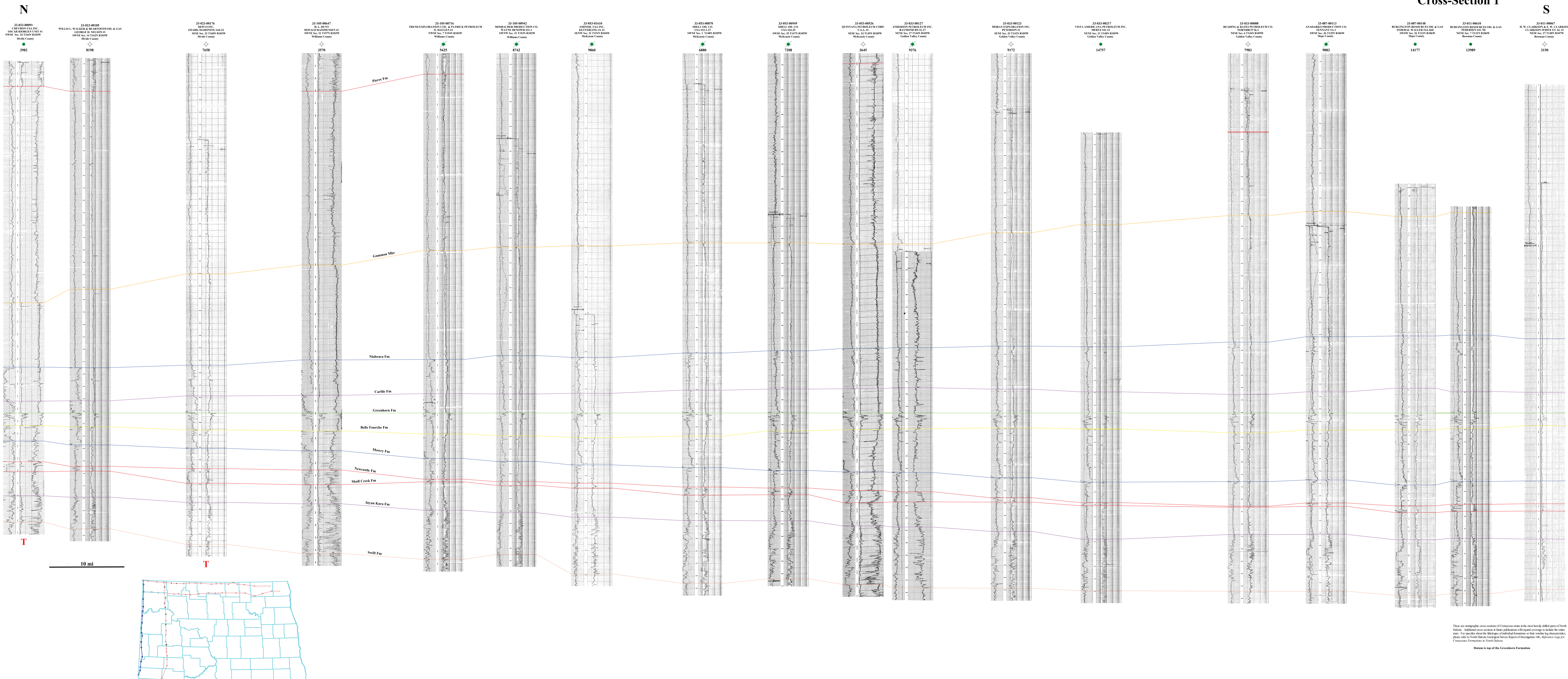
Datum is top of the Greenhorn Formation

Preliminary Cross-Sections of Cretaceous Strata in North Dakota



Richard D. LeFever and Julie A. LeFever

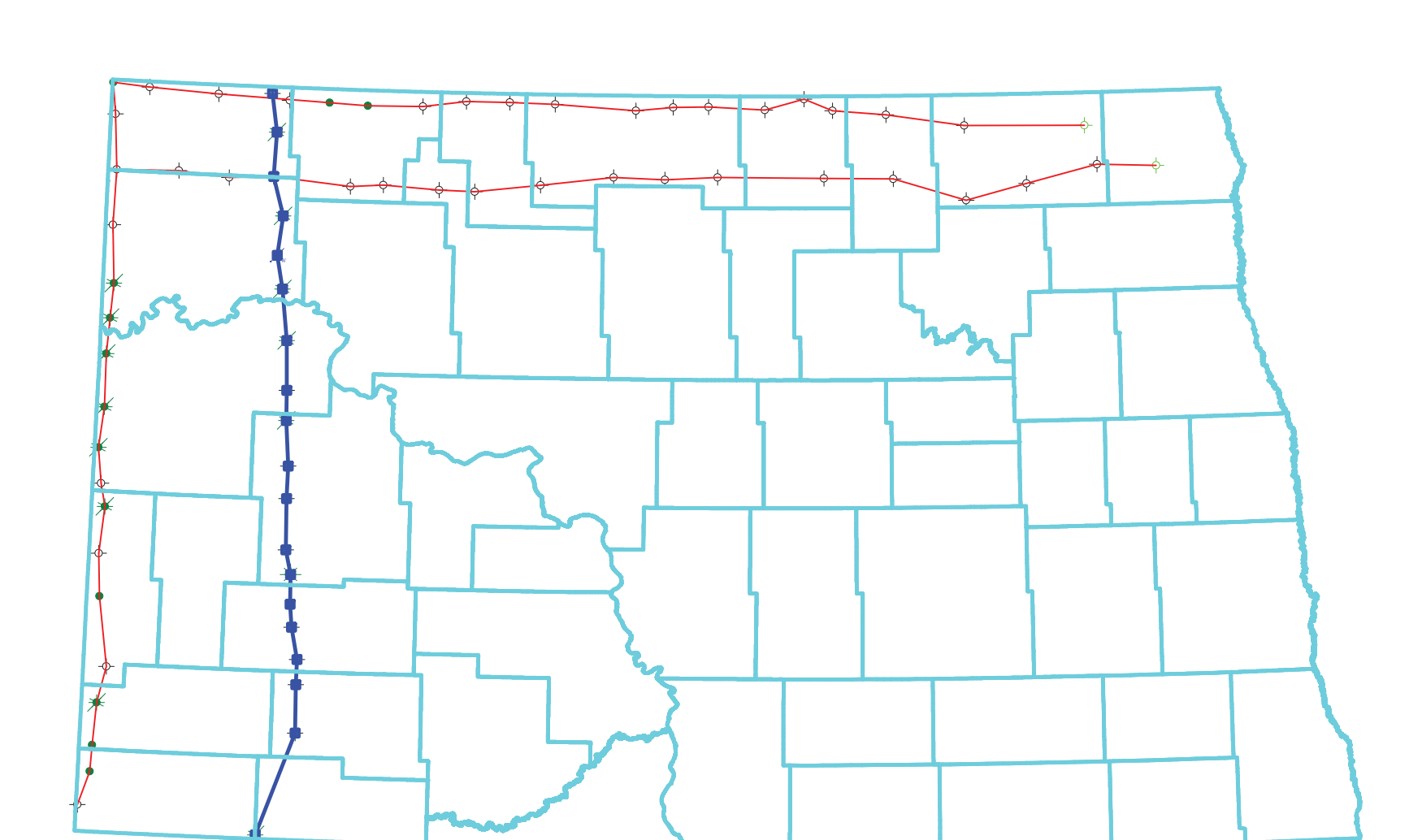
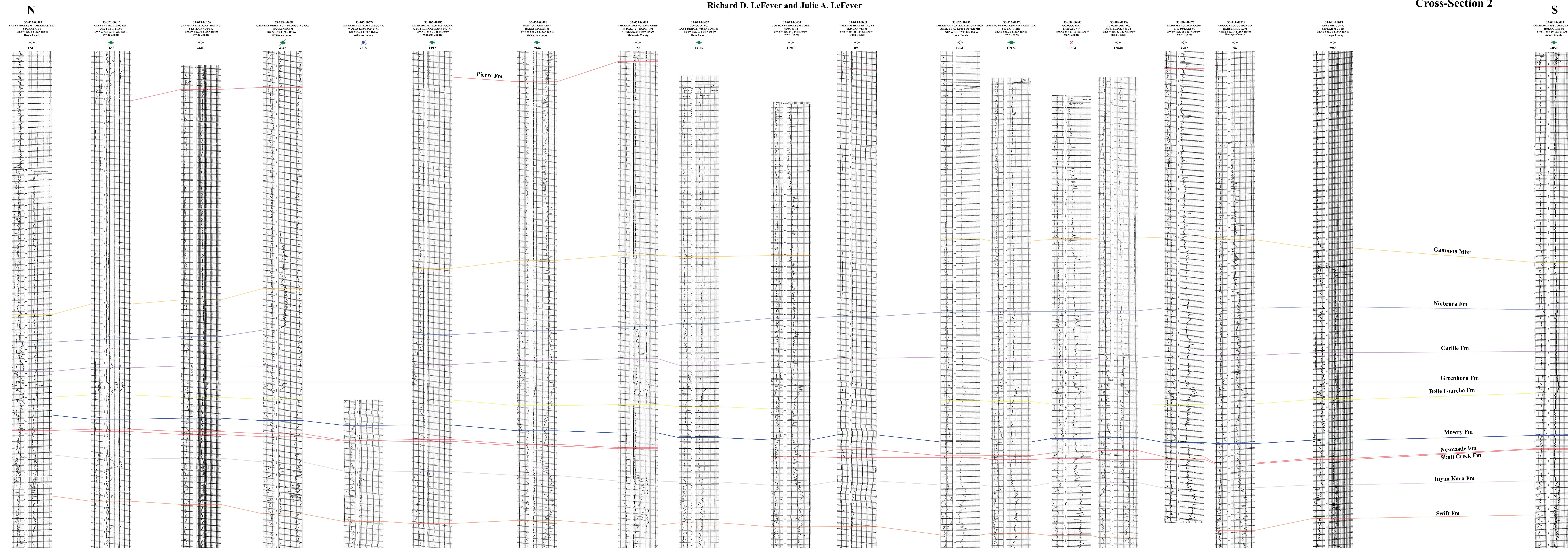
Cross-Section 1



These are stratigraphic cross-sections of Cretaceous strata in the most heavily drilled parts of North Dakota. Additional cross-sections in future publications will expand coverage to include the entire state. For specifics about the thickness of individual formations or their width by characteristics, please refer to North Dakota Geological Survey Report of Investigation 106, Reference Logs for Cretaceous Formations in North Dakota.

Datum is top of the Greenhorn Formation.

Preliminary Cross-Sections of Cretaceous Strata in North Dakota



These are stratigraphic cross-sections of Cretaceous strata in the most heavily drilled parts of North Dakota. Additional cross-sections in future publications will expand coverage to include the entire state. For specifics about the blockage of individual formations or their within-log characteristics, please refer to North Dakota Geological Survey Report of Investigation 106, *Reference Log for Cretaceous Formations in North Dakota*.

Bottom is top of the Greenhorn Formation